

## Product datasheet for **TA370109**

### RSU1 Rabbit Polyclonal Antibody

#### Product data:

Product Type:	Primary Antibodies
Applications:	IHC, WB
Recommended Dilution:	WB: 500-2000 WB positive control: Rat heart tissue, Mouse heart tissue, Rat brain tissue, Mouse brain tissue, HEPG2 cell, Jurkat and Lovo cell lysates IHC: 25-100 Positive control: Human liver cancer Predicted cell location: Cytoplasm or Nucleus
Reactivity:	Human, Mouse, Rat
Host:	Rabbit
Isotype:	IgG
Clonality:	Polyclonal
Immunogen:	Fusion protein of human RSU1
Formulation:	pH7.4 PBS, 0.05% NaN <sub>3</sub> , 40% Glycerol
Concentration:	lot specific
Purification:	Antigen affinity purification
Conjugation:	Unconjugated
Storage:	Store at -20°C.
Stability:	1 year
Predicted Protein Size:	32 kDa
Gene Name:	Ras suppressor protein 1
Database Link:	<a href="#">Entrez Gene 6251 Human Q15404</a>



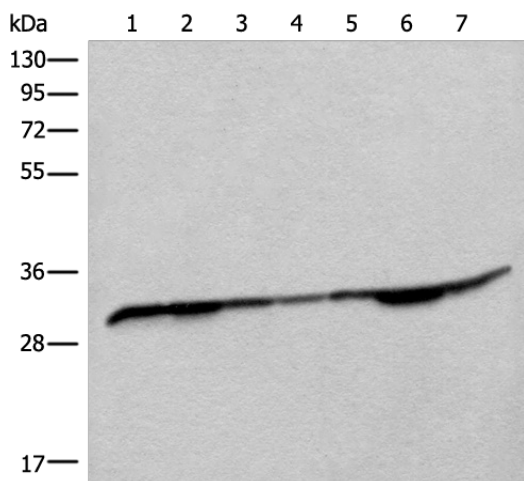
[View online »](#)

**Background:**

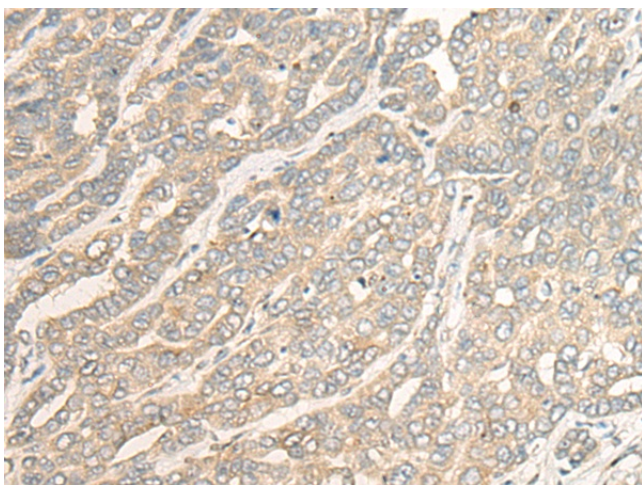
This gene encodes a protein that is involved in the Ras signal transduction pathway, growth inhibition, and nerve-growth factor induced differentiation processes, as determined in mouse and human cell line studies. In mouse, the encoded protein was initially isolated based on its ability to inhibit v-Ras transformation. Multiple alternatively spliced transcript variants for this gene have been reported; one of these variants was found only in glioma tumors.

**Synonyms:**

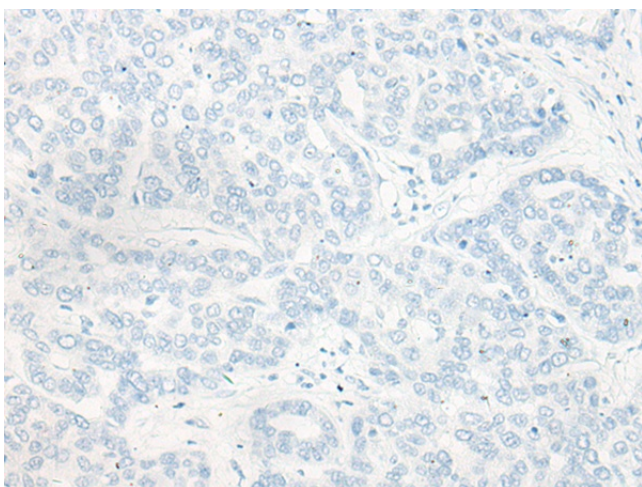
FLJ31034; OTTHUMP00000019217; OTTHUMP00000019218; RSP-1; RSP1; Rsu-1

**Product images:**


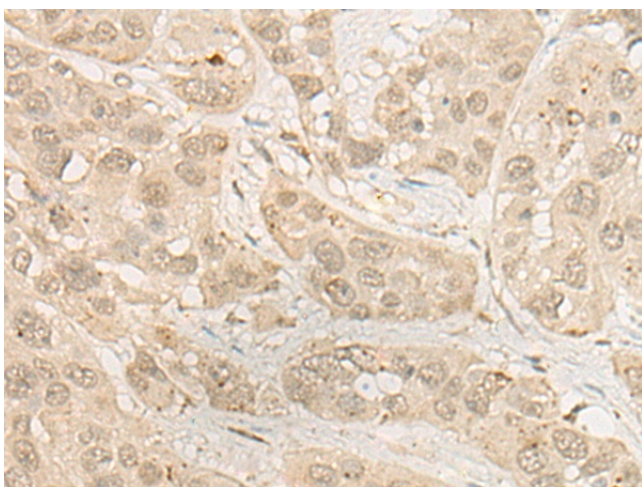
Gel: 8%SDS-PAGE  
 Lysate: 40 µg  
 Lane 1-7: Rat heart tissue  
 Mouse heart tissue  
 Rat brain tissue  
 Mouse brain tissue  
 HEPG2 cell  
 Jurkat and Lovo cell lysates  
 Primary antibody: TA370109 (RSU1 Antibody) at dilution 1/400  
 Secondary antibody: Goat anti rabbit IgG at 1/8000 dilution  
 Exposure time: 3 seconds



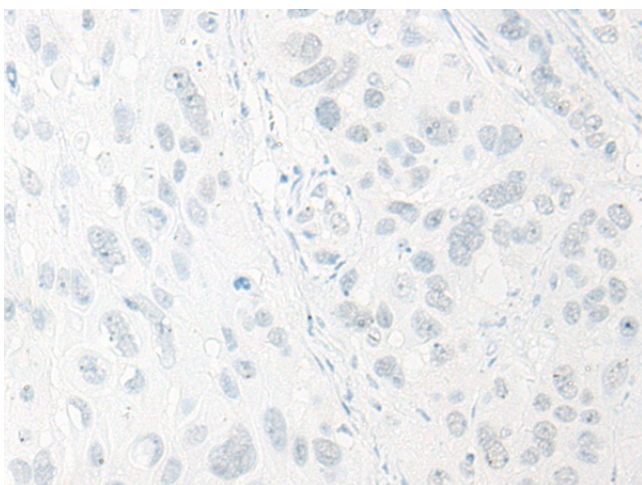
Immunohistochemistry of paraffin-embedded Human liver cancer tissue using TA370109 (RSU1 Antibody) at dilution 1/30 (Original magnification: ×200)



Immunohistochemistry of paraffin-embedded Human liver cancer tissue using TA370109 (RSU1 Antibody) at dilution 1/30, treated with fusion protein. (Original magnification: x200)



Immunohistochemistry of paraffin-embedded Human esophagus cancer tissue using TA370109 (RSU1 Antibody) at dilution 1/30 (Original magnification: x200)



Immunohistochemistry of paraffin-embedded Human esophagus cancer tissue using TA370109 (RSU1 Antibody) at dilution 1/30, treated with fusion protein. (Original magnification: x200)