

Product datasheet for **TA370088S**

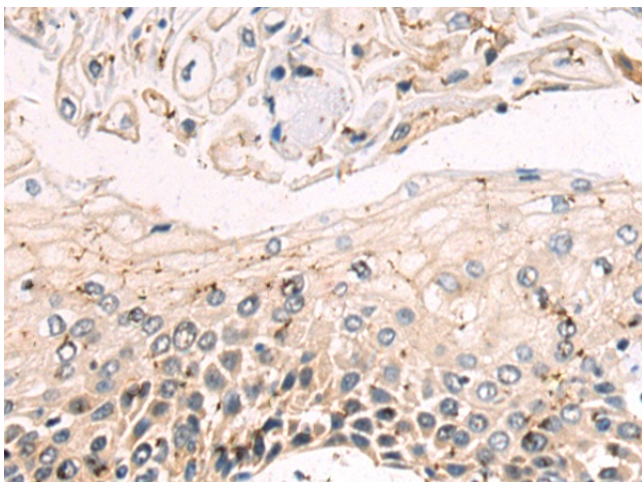
DENND1B Rabbit Polyclonal Antibody

Product data:

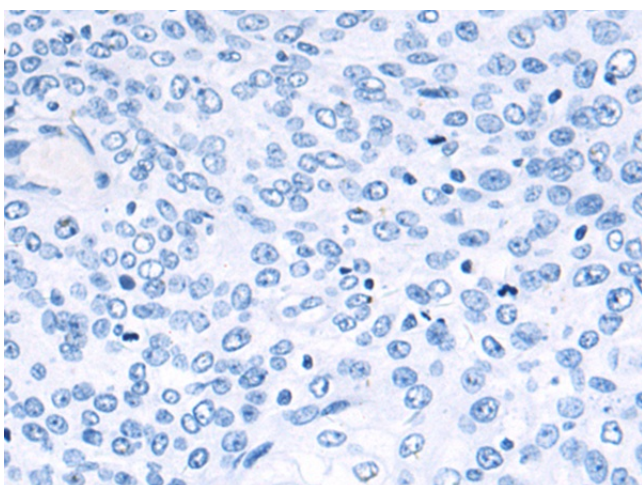
Product Type:	Primary Antibodies
Applications:	IHC
Recommended Dilution:	IHC: 50-200 Positive control: Human esophagus cancer Predicted cell location: Cytoplasm
Reactivity:	Human, Mouse
Host:	Rabbit
Isotype:	IgG
Clonality:	Polyclonal
Immunogen:	Fusion protein of human DENND1B
Formulation:	pH7.4 PBS, 0.05% NaN ₃ , 40% Glycerol
Purification:	Antigen affinity purification
Conjugation:	Unconjugated
Storage:	Store at -20°C.
Stability:	1 year
Gene Name:	DENN domain containing 1B
Database Link:	Entrez Gene 163486 Human Q6P3S1
Background:	Clathrin (see MIM 118955)-mediated endocytosis is a major mechanism for internalization of proteins and lipids. Members of the connectin family, such as DENND1B, function as guanine nucleotide exchange factors (GEFs) for the early endosomal small GTPase RAB35 (MIM 604199) and bind to clathrin and clathrin adaptor protein-2 (AP2; see MIM 601024). Thus, connectins link RAB35 activation with the clathrin machinery (Marat and McPherson, 2010 [PubMed 20154091]).
Synonyms:	C1orf218; DKFZp547O0715; FAM31B; FLJ20054; FLJ21179; FLJ33888; MGC27044; MGC103810



[View online »](#)

Product images:

Immunohistochemistry of paraffin-embedded Human esophagus cancer tissue using [TA370088] (DENND1B Antibody) at dilution 1/100 (Original magnification: $\times 200$)



Immunohistochemistry of paraffin-embedded Human esophagus cancer tissue using [TA370088] (DENND1B Antibody) at dilution 1/100, treated with fusion protein. (Original magnification: $\times 200$)