

Product datasheet for **TA370086**

delta Sarcoglycan (SGCD) Rabbit Polyclonal Antibody

Product data:

Product Type:	Primary Antibodies
Applications:	IHC, WB
Recommended Dilution:	WB: 200-1000 WB positive control: Jurkat cell lysate IHC: 25-100 Positive control: Human tonsil Predicted cell location: Cytoplasm
Reactivity:	Human, Mouse
Host:	Rabbit
Isotype:	IgG
Clonality:	Polyclonal
Immunogen:	Fusion protein of human SGCD
Formulation:	pH7.4 PBS, 0.05% NaN ₃ , 40% Glycerol
Concentration:	lot specific
Purification:	Antigen affinity purification
Conjugation:	Unconjugated
Storage:	Store at -20°C.
Stability:	1 year
Predicted Protein Size:	32 kDa
Gene Name:	sarcoglycan delta
Database Link:	Entrez Gene 6444 Human Q92629



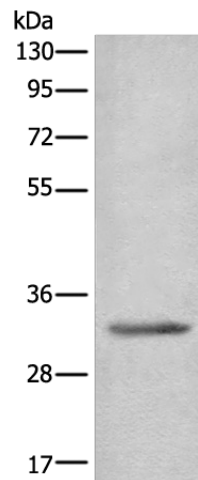
[View online »](#)

Background:

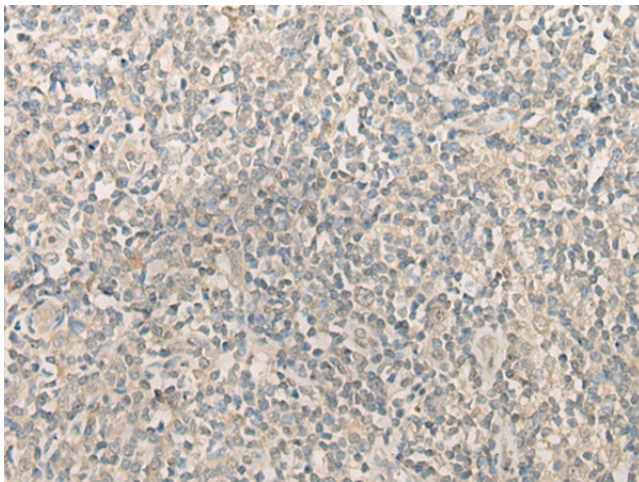
The protein encoded by this gene is one of the four known components of the sarcoglycan complex, which is a subcomplex of the dystrophin-glycoprotein complex (DGC). DGC forms a link between the F-actin cytoskeleton and the extracellular matrix. This protein is expressed most abundantly in skeletal and cardiac muscle. Mutations in this gene have been associated with autosomal recessive limb-girdle muscular dystrophy and dilated cardiomyopathy. Alternatively spliced transcript variants encoding distinct isoforms have been observed for this gene.

Synonyms:

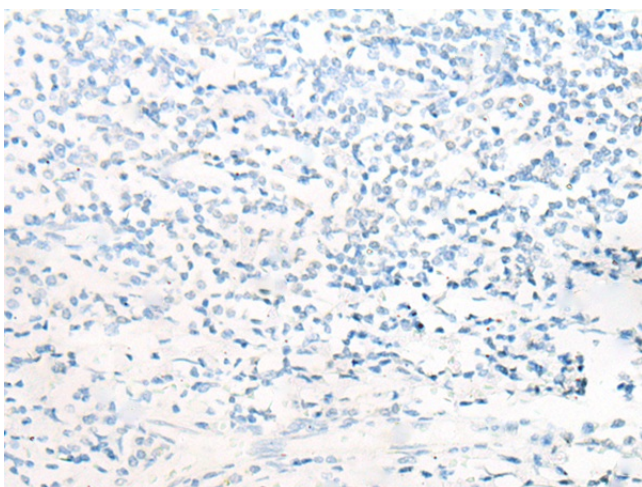
35DAG; CMD1L; DAGD; delta-sarcoglycan; LGMD2F; MGC22567; SG-delta; SGCDP; SGD

Product images:

Gel: 8%SDS-PAGE
Lysate: 40 µg
Lane: Jurkat cell lysate
Primary antibody: TA370086 (SGCD Antibody) at dilution 1/300
Secondary antibody: Goat anti rabbit IgG at 1/8000 dilution
Exposure time: 3 seconds



Immunohistochemistry of paraffin-embedded Human tonsil tissue using TA370086 (SGCD Antibody) at dilution 1/20 (Original magnification: ×200)



Immunohistochemistry of paraffin-embedded Human tonsil tissue using TA370086 (SGCD Antibody) at dilution 1/20, treated with fusion protein. (Original magnification: x200)