

Product datasheet for **TA370068**

DDI1 Rabbit Polyclonal Antibody

Product data:

Product Type:	Primary Antibodies
Applications:	IHC
Recommended Dilution:	IHC: 20-100 Positive control: Human brain Predicted cell location: Cytoplasm
Reactivity:	Human, Mouse, Rat
Host:	Rabbit
Isotype:	IgG
Clonality:	Polyclonal
Immunogen:	Fusion protein of human DDI1
Formulation:	pH7.4 PBS, 0.05% NaN ₃ , 40% Glycerol
Concentration:	lot specific
Purification:	Antigen affinity purification
Conjugation:	Unconjugated
Storage:	Store at -20°C.
Stability:	1 year
Gene Name:	DNA damage inducible 1 homolog 1
Database Link:	Entrez Gene 414301 Human Q8WTU0



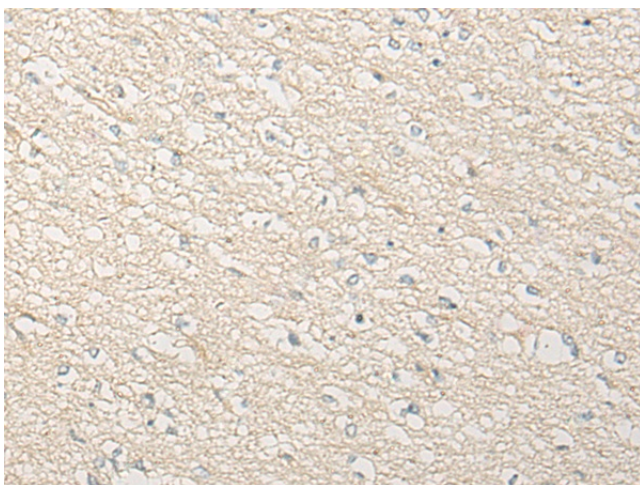
[View online »](#)

Background:

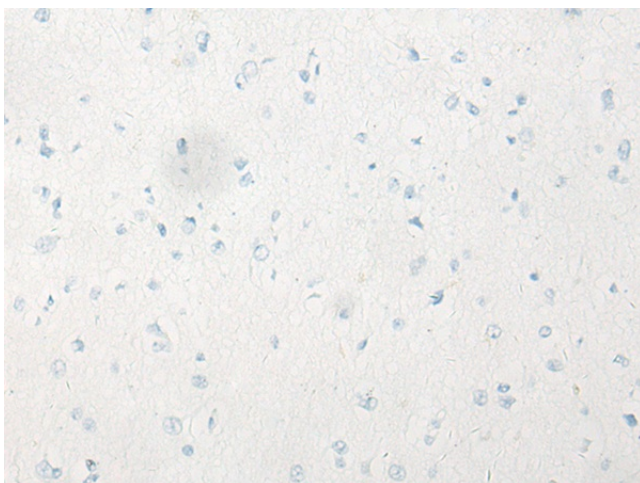
DDI1 and DDI2 are ubiquitin receptor homologs of the *Saccharomyces cerevisiae* ddi1 protein, which is involved in regulation of the cell cycle and the late secretory pathway. DDI1 is a 396 amino acid protein that contains one ubiquitin-like domain. The gene encoding DDI1 maps to human chromosome 11, which makes up around 4% of human genomic DNA and is considered a gene and disease association dense chromosome. The chromosome 11 encoded Atm gene is important for regulation of cell cycle arrest and apoptosis following double strand DNA breaks. Atm mutation leads to the disorder known as ataxia-telangiectasia. The blood disorders Sickle cell anemia and β thalassemia are caused by HBB gene mutations. Wilms' tumors, WAGR syndrome and Denys-Drash syndrome are associated with mutations of the WT1 gene.

Synonyms:

FLJ36017

Product images:


Immunohistochemistry of paraffin-embedded Human brain tissue using TA370068 (DDI1 Antibody) at dilution 1/40 (Original magnification: $\times 200$)



Immunohistochemistry of paraffin-embedded Human brain tissue using TA370068 (DDI1 Antibody) at dilution 1/40, treated with fusion protein. (Original magnification: $\times 200$)