

## Product datasheet for **TA370058S**

### DAK (TKFC) Rabbit Polyclonal Antibody

#### Product data:

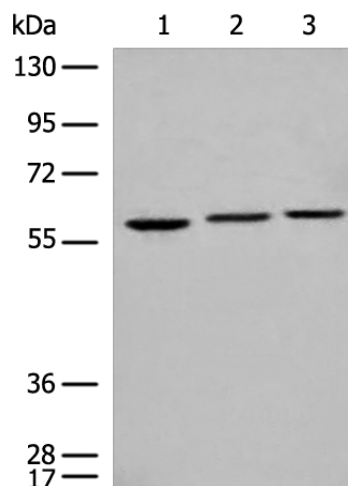
Product Type:	Primary Antibodies
Applications:	IHC, WB
Recommended Dilution:	WB: 500-2000 WB positive control: HeLa A549 and 823 cell lysates IHC: 30-150 Positive control: Human gastric cancer Predicted cell location: Nucleus
Reactivity:	Human, Mouse, Rat
Host:	Rabbit
Isotype:	IgG
Clonality:	Polyclonal
Immunogen:	Fusion protein of human TKFC
Formulation:	pH7.4 PBS, 0.05% NaN <sub>3</sub> , 40% Glycerol
Purification:	Antigen affinity purification
Conjugation:	Unconjugated
Storage:	Store at -20°C.
Stability:	1 year
Predicted Protein Size:	59 kDa
Gene Name:	triokinase and FMN cyclase
Database Link:	<a href="#">Entrez Gene 26007 Human Q3LXA3</a>

**Background:** This gene is a member of the family of dihydroxyacetone kinases, which have a protein structure distinct from other kinases. The product of this gene phosphorylates dihydroxyacetone, and also catalyzes the formation of riboflavin 4',5'-phosphate (aka cyclin FMN) from FAD. Several alternatively spliced transcript variants have been identified, but the full-length nature of only one has been determined.



[View online »](#)

## Product images:



Gel: 8%SDS-PAGE

Lysate: 40  $\mu$ g

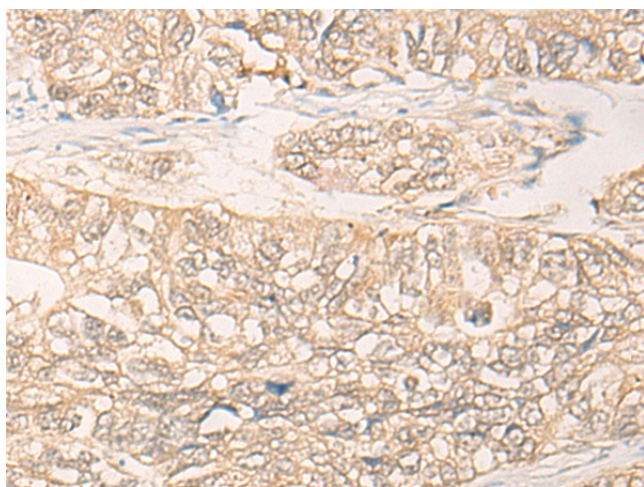
Lane 1-3: HeLa

A549 and 823 cell lysates

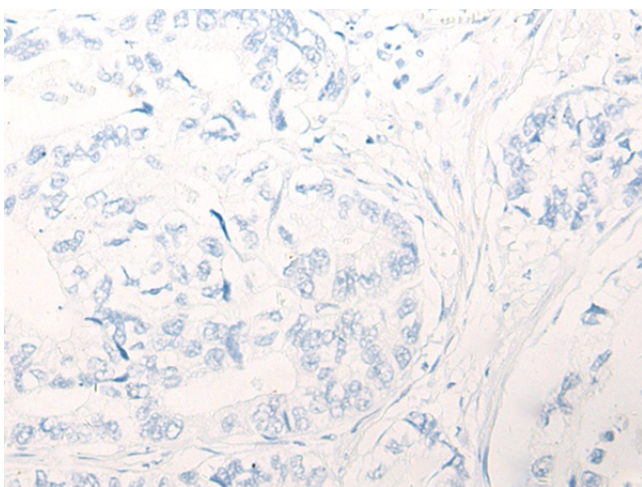
Primary antibody: [TA370058] (TKFC Antibody) at dilution 1/700

Secondary antibody: Goat anti rabbit IgG at 1/8000 dilution

Exposure time: 5 seconds



Immunohistochemistry of paraffin-embedded Human gastric cancer tissue using [TA370058] (TKFC Antibody) at dilution 1/30 (Original magnification:  $\times$ 200)



Immunohistochemistry of paraffin-embedded Human gastric cancer tissue using [TA370058] (TKFC Antibody) at dilution 1/30, treated with fusion protein. (Original magnification:  $\times 200$ )