

Product datasheet for **TA370038**

CRABP1 Rabbit Polyclonal Antibody

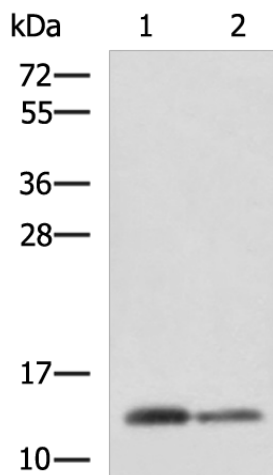
Product data:

Product Type:	Primary Antibodies
Applications:	IHC, WB
Recommended Dilution:	WB: 1000-5000 WB positive control: Human breast tissue and Human thyroid tissue lysates IHC: 100-300 Positive control: Human liver cancer Predicted cell location: Cytoplasm
Reactivity:	Human, Mouse, Rat
Host:	Rabbit
Isotype:	IgG
Clonality:	Polyclonal
Immunogen:	Fusion protein of human CRABP1
Formulation:	pH7.4 PBS, 0.05% NaN ₃ , 40% Glycerol
Concentration:	lot specific
Purification:	Antigen affinity purification
Conjugation:	Unconjugated
Storage:	Store at -20°C.
Stability:	1 year
Predicted Protein Size:	16 kDa
Gene Name:	cellular retinoic acid binding protein 1
Database Link:	Entrez Gene 1381 Human P29762
Background:	This gene encodes a specific binding protein for a vitamin A family member and is thought to play an important role in retinoic acid-mediated differentiation and proliferation processes. It is structurally similar to the cellular retinol-binding proteins, but binds only retinoic acid at specific sites within the nucleus, which may contribute to vitamin A-directed differentiation in epithelial tissue.
Synonyms:	CRABP; CRABP-I; CRABPI; RBP5

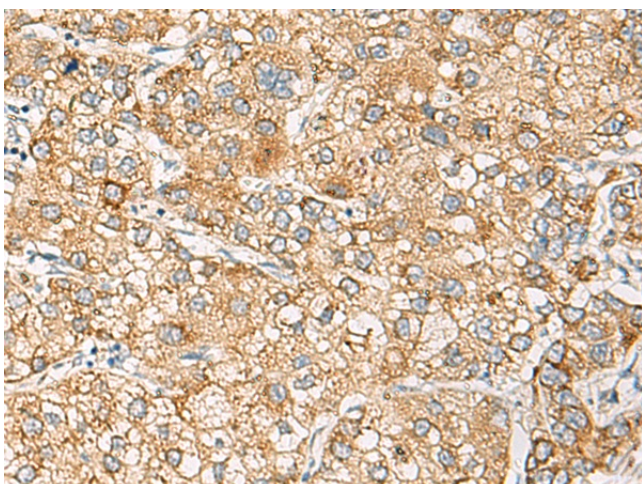


[View online >](#)

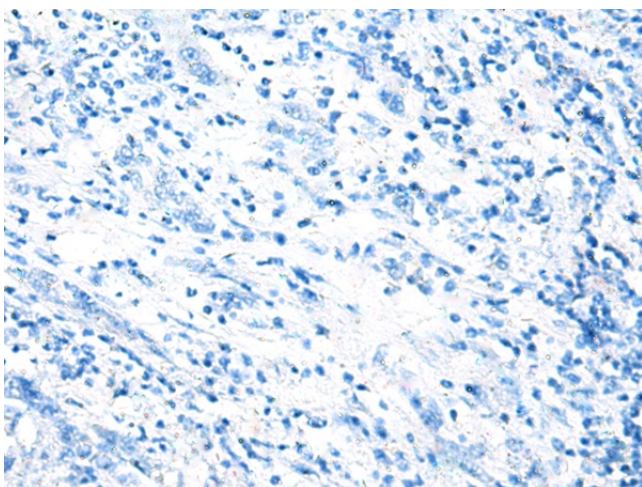
Product images:



Gel: 12%SDS-PAGE
Lysate: 40 μ g
Lane 1-2: Human breast tissue and Human thyroid tissue lysates
Primary antibody: TA370038 (CRABP1 Antibody) at dilution 1/2000
Secondary antibody: Goat anti rabbit IgG at 1/5000 dilution
Exposure time: 1 minute



Immunohistochemistry of paraffin-embedded Human liver cancer tissue using TA370038 (CRABP1 Antibody) at dilution 1/120 (Original magnification: \times 200)



Immunohistochemistry of paraffin-embedded Human liver cancer tissue using TA370038 (CRABP1 Antibody) at dilution 1/120, treated with fusion protein. (Original magnification: ×200)