

## Product datasheet for **TA370030**

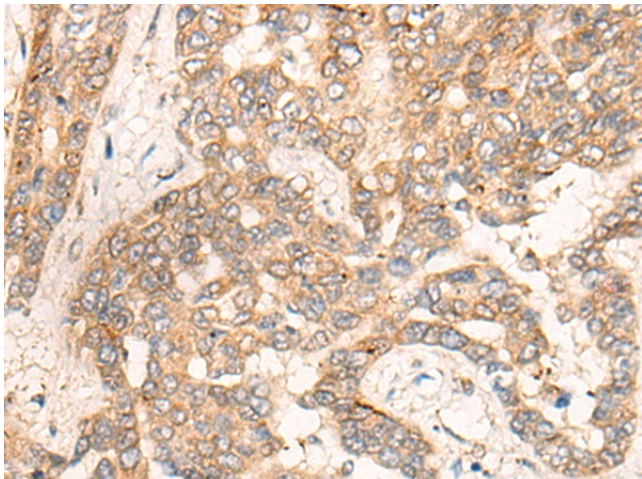
### **CPEB4 Rabbit Polyclonal Antibody**

#### **Product data:**

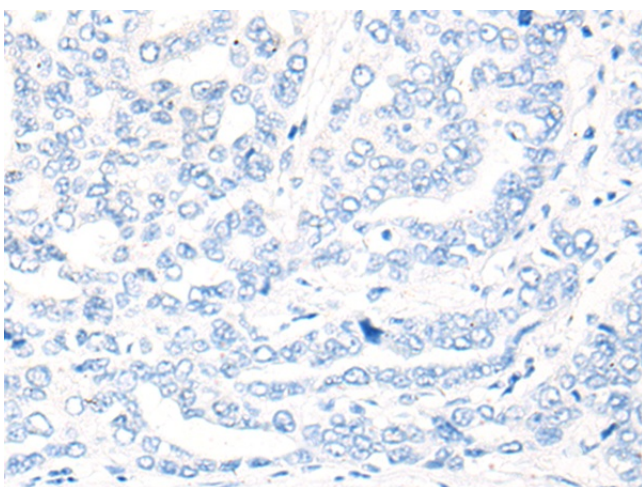
<b>Product Type:</b>	Primary Antibodies
<b>Applications:</b>	IHC
<b>Recommended Dilution:</b>	IHC: 25-100 Positive control: Human liver cancer Predicted cell location: Cytoplasm and Cell membrane
<b>Reactivity:</b>	Human, Mouse
<b>Host:</b>	Rabbit
<b>Isotype:</b>	IgG
<b>Clonality:</b>	Polyclonal
<b>Immunogen:</b>	Fusion protein of human CPEB4
<b>Formulation:</b>	pH7.4 PBS, 0.05% NaN <sub>3</sub> , 40% Glycerol
<b>Concentration:</b>	lot specific
<b>Purification:</b>	Antigen affinity purification
<b>Conjugation:</b>	Unconjugated
<b>Storage:</b>	Store at -20°C.
<b>Stability:</b>	1 year
<b>Gene Name:</b>	cytoplasmic polyadenylation element binding protein 4
<b>Database Link:</b>	<a href="#">Entrez Gene 80315 Human Q17RY0</a>
<b>Background:</b>	Cytoplasmic polyadenylation element binding protein 4 (CPEB4) is a sequence-specific RNA-binding protein that participates in translational control. CPEB4 is a member of the CPEB family, which includes CPEB1, CPEB2, CPEB3, and CPEB4, all of which share structure and sequence identity in the C-terminal RNA-binding domain (RBD). CPEB4 has two domains: one that is structured for RNA binding and one that is unstructured and low complexity that has no known function.
<b>Synonyms:</b>	CPE-BP4; hCPEB-4; KIAA1673



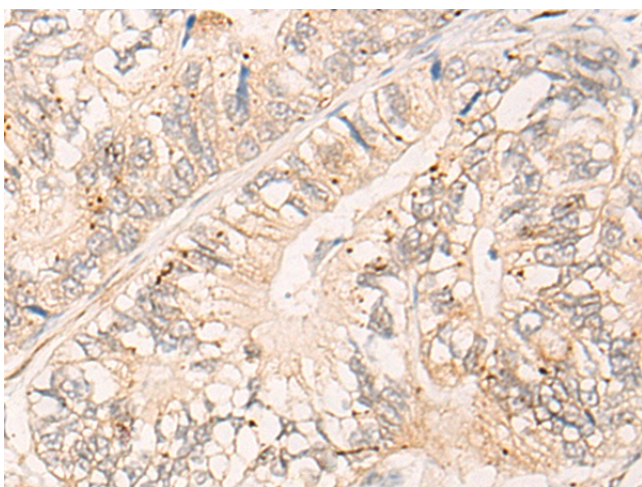
[View online »](#)

**Product images:**

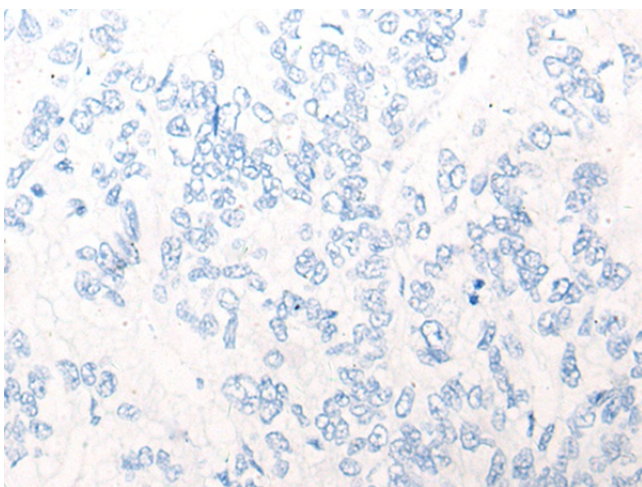
Immunohistochemistry of paraffin-embedded Human liver cancer tissue using TA370030 (CPEB4 Antibody) at dilution 1/20 (Original magnification: ×200)



Immunohistochemistry of paraffin-embedded Human liver cancer tissue using TA370030 (CPEB4 Antibody) at dilution 1/20, treated with fusion protein. (Original magnification: ×200)



Immunohistochemistry of paraffin-embedded Human gastric cancer tissue using TA370030 (CPEB4 Antibody) at dilution 1/20 (Original magnification:  $\times 200$ )



Immunohistochemistry of paraffin-embedded Human gastric cancer tissue using TA370030 (CPEB4 Antibody) at dilution 1/20, treated with fusion protein. (Original magnification:  $\times 200$ )