

Product datasheet for **TA370029S**

CP2c (TFCP2) Rabbit Polyclonal Antibody

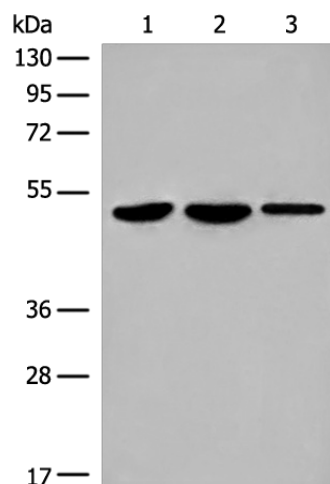
Product data:

Product Type:	Primary Antibodies
Applications:	IHC, WB
Recommended Dilution:	WB: 200-1000 WB positive control: 293T/NIH/3T3 and K562 cell lysates IHC: 30-150 Positive control: Human liver cancer Predicted cell location: Nucleus
Reactivity:	Human, Mouse
Host:	Rabbit
Isotype:	IgG
Clonality:	Polyclonal
Immunogen:	Fusion protein of human TFCP2
Formulation:	pH7.4 PBS, 0.05% NaN ₃ , 40% Glycerol
Purification:	Antigen affinity purification
Conjugation:	Unconjugated
Storage:	Store at -20°C.
Stability:	1 year
Predicted Protein Size:	57 kDa
Gene Name:	transcription factor CP2
Database Link:	Entrez Gene 7024 Human Q12800
Background:	This gene encodes a transcription factor that binds the alpha-globin promoter and activates transcription of the alpha-globin gene. The encoded protein regulates erythroid gene expression, plays a role in the transcriptional switch of globin gene promoters, and it activates many other cellular and viral gene promoters. The gene product interacts with certain inflammatory response factors, and polymorphisms of this gene may be involved in the pathogenesis of Alzheimer's disease.
Synonyms:	CP-2; CP2; D230015P20Rik; LBP-1c; LBP-1d; LBP1; LSF; Tcfcp2; UBP-1

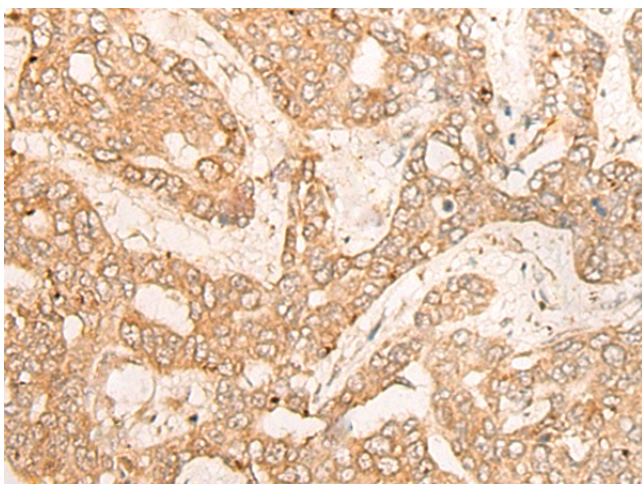


[View online »](#)

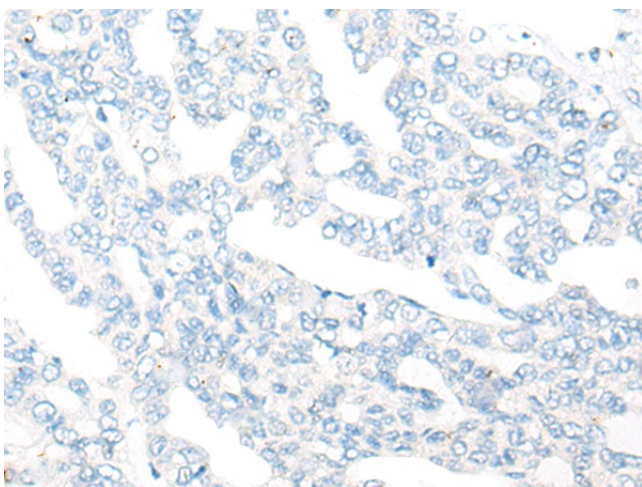
Product images:



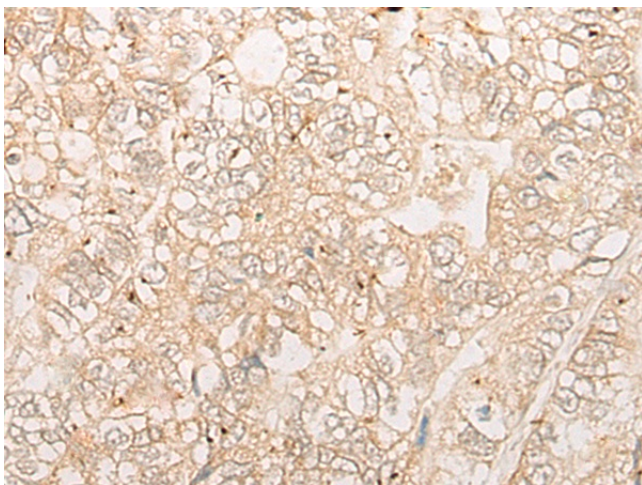
Gel: 8%SDS-PAGE
Lysate: 40 μ g
Lane 1-3: 293T
NIH/3T3 and K562 cell lysates
Primary antibody: [TA370029] (TFCP2 Antibody)
at dilution 1/450
Secondary antibody: Goat anti rabbit IgG at
1/8000 dilution
Exposure time: 1 second



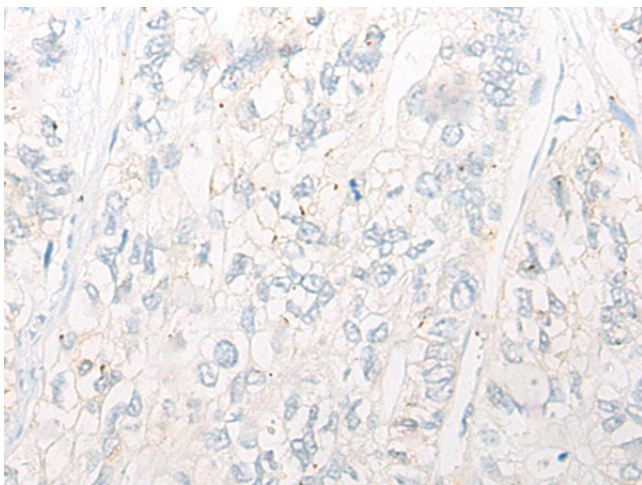
Immunohistochemistry of paraffin-embedded
Human liver cancer tissue using [TA370029]
(TFCP2 Antibody) at dilution 1/40 (Original
magnification: \times 200)



Immunohistochemistry of paraffin-embedded Human liver cancer tissue using [TA370029] (TFCP2 Antibody) at dilution 1/40, treated with fusion protein. (Original magnification: $\times 200$)



Immunohistochemistry of paraffin-embedded Human gastric cancer tissue using [TA370029] (TFCP2 Antibody) at dilution 1/40 (Original magnification: $\times 200$)



Immunohistochemistry of paraffin-embedded Human gastric cancer tissue using [TA370029] (TFCP2 Antibody) at dilution 1/40, treated with fusion protein. (Original magnification: $\times 200$)