

Product datasheet for **TA370014**

COPE Rabbit Polyclonal Antibody

Product data:

Product Type:	Primary Antibodies
Applications:	IHC, WB
Recommended Dilution:	WB: 200-1000 WB positive control: Hela A375 and PC-3 cell lysates IHC: 20-100 Positive control: Human liver cancer Predicted cell location: Cytoplasm
Reactivity:	Human, Mouse
Host:	Rabbit
Isotype:	IgG
Clonality:	Polyclonal
Immunogen:	Fusion protein of human COPE
Formulation:	pH7.4 PBS, 0.05% NaN ₃ , 40% Glycerol
Concentration:	lot specific
Purification:	Antigen affinity purification
Conjugation:	Unconjugated
Storage:	Store at -20°C.
Stability:	1 year
Predicted Protein Size:	34 kDa
Gene Name:	coatomer protein complex subunit epsilon
Database Link:	Entrez Gene 11316 Human O14579

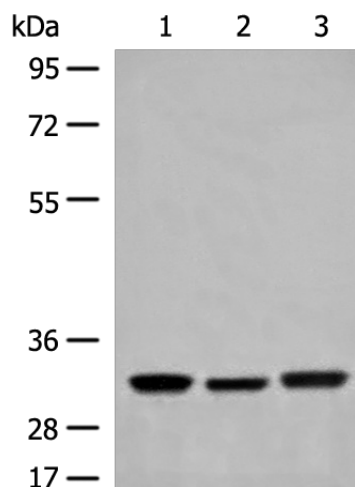
Background: The product of this gene is an epsilon subunit of coatomer protein complex. Coatomer is a cytosolic protein complex that binds to dilysine motifs and reversibly associates with Golgi non-clathrin-coated vesicles. It is required for budding from Golgi membranes, and is essential for the retrograde Golgi-to-ER transport of dilysine-tagged proteins. Coatomer complex consists of at least the alpha, beta, beta', gamma, delta, epsilon and zeta subunits. Alternatively spliced transcript variants encoding different isoforms have been identified.



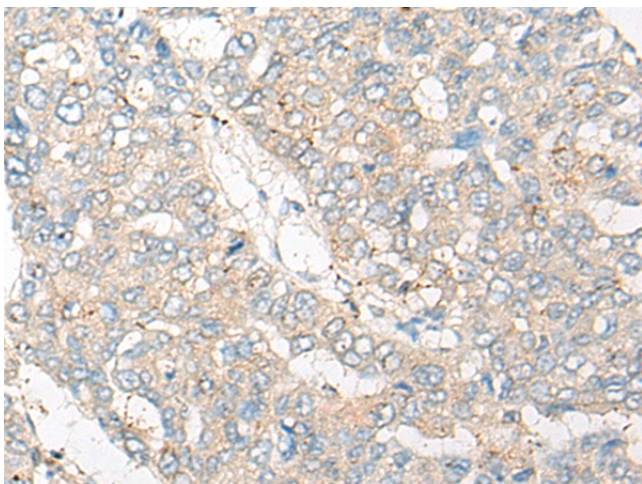
[View online »](#)

Synonyms: epsilon-COP; FLJ13241

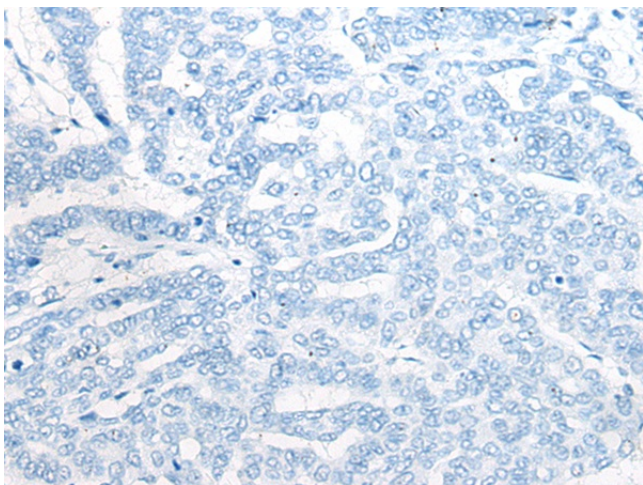
Product images:



Gel: 8%SDS-PAGE
Lysate: 40 μ g
Lane 1-3: HeLa
A375 and PC-3 cell lysates
Primary antibody: TA370014 (COPE Antibody) at dilution 1/300
Secondary antibody: Goat anti rabbit IgG at 1/8000 dilution
Exposure time: 10 seconds



Immunohistochemistry of paraffin-embedded Human liver cancer tissue using TA370014 (COPE Antibody) at dilution 1/25 (Original magnification: \times 200)



Immunohistochemistry of paraffin-embedded Human liver cancer tissue using TA370014 (COPE Antibody) at dilution 1/25, treated with fusion protein. (Original magnification: x200)