

Product datasheet for **TA370000**

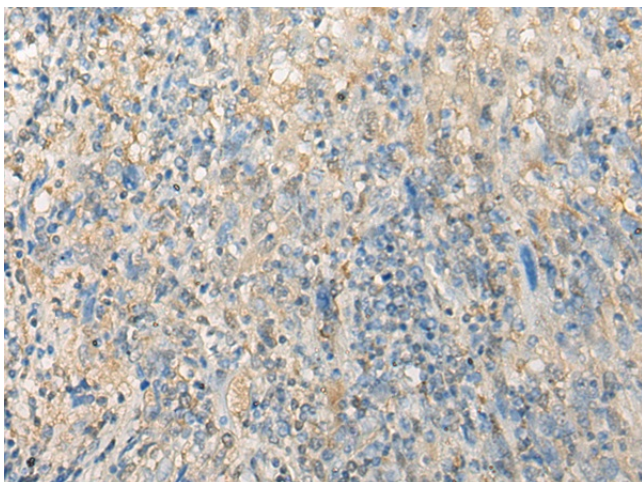
CNN2 Rabbit Polyclonal Antibody

Product data:

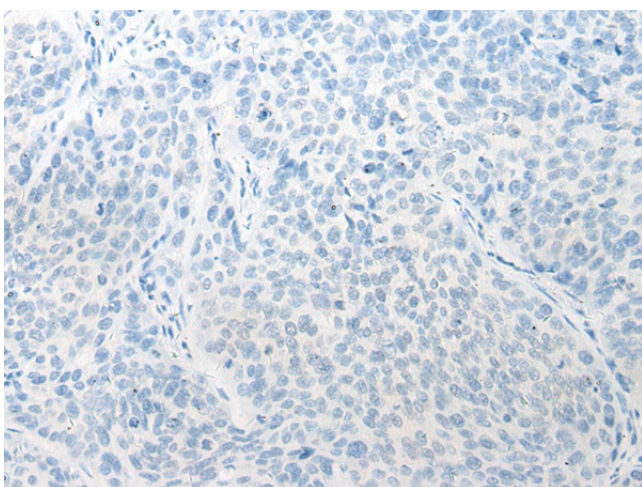
Product Type:	Primary Antibodies
Applications:	IHC
Recommended Dilution:	IHC: 20-100 Positive control: Human cervical cancer Predicted cell location: Cytoplasm
Reactivity:	Human, Mouse
Host:	Rabbit
Isotype:	IgG
Clonality:	Polyclonal
Immunogen:	Fusion protein of human CNN2
Formulation:	pH7.4 PBS, 0.05% NaN3, 40% Glycerol
Concentration:	lot specific
Purification:	Antigen affinity purification
Conjugation:	Unconjugated
Storage:	Store at -20°C.
Stability:	1 year
Gene Name:	calponin 2
Database Link:	Entrez Gene 1265 Human Q99439
Background:	The protein encoded by this gene, which can bind actin, calmodulin, troponin C, and tropomyosin, may function in the structural organization of actin filaments. The encoded protein could play a role in smooth muscle contraction and cell adhesion. Several pseudogenes of this gene have been identified, and are present on chromosomes 1, 2, 3, 6, 9, 11, 13, 15, 16, 21 and 22. Alternative splicing results in multiple transcript variants encoding different isoforms.
Synonyms:	CNN2



[View online »](#)

Product images:

Immunohistochemistry of paraffin-embedded Human cervical cancer tissue using TA370000 (CNN2 Antibody) at dilution 1/20 (Original magnification: $\times 200$)



Immunohistochemistry of paraffin-embedded Human cervical cancer tissue using TA370000 (CNN2 Antibody) at dilution 1/20, treated with fusion protein. (Original magnification: $\times 200$)