

Product datasheet for **TA369990**

CLC7 (CLCN7) Rabbit Polyclonal Antibody

Product data:

Product Type:	Primary Antibodies
Applications:	IHC, WB
Recommended Dilution:	WB: 500-2000 WB positive control: HepG2, A549, LOVO cell lysates IHC: 100-300 Positive control: Human esophagus cancer Predicted cell location: Cytoplasm
Reactivity:	Human, Mouse, Rat
Host:	Rabbit
Isotype:	IgG
Clonality:	Polyclonal
Immunogen:	Fusion protein of human CLCN7
Formulation:	pH7.4 PBS, 0.05% NaN ₃ , 40% Glycerol
Concentration:	lot specific
Purification:	Antigen affinity purification
Conjugation:	Unconjugated
Storage:	Store at -20°C.
Stability:	1 year
Predicted Protein Size:	89 kDa
Gene Name:	chloride voltage-gated channel 7
Database Link:	Entrez Gene 1186 Human P51798



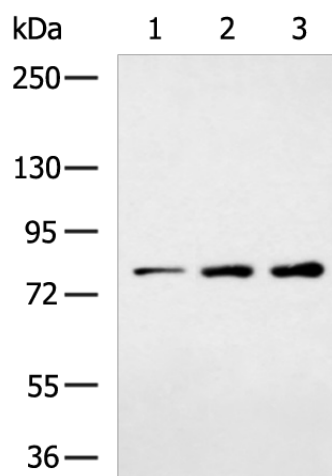
[View online »](#)

Background:

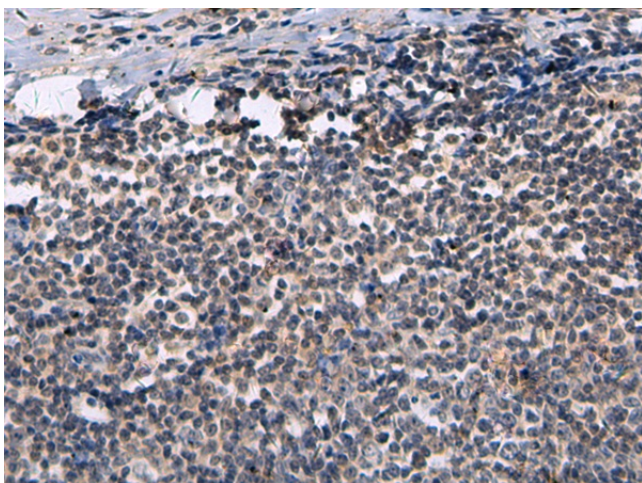
The product of this gene belongs to the CLC chloride channel family of proteins. Chloride channels play important roles in the plasma membrane and in intracellular organelles. This gene encodes chloride channel 7. Defects in this gene are the cause of osteopetrosis autosomal recessive type 4 (OPTB4), also called infantile malignant osteopetrosis type 2 as well as the cause of autosomal dominant osteopetrosis type 2 (OPTA2), also called autosomal dominant Albers-Schonberg disease or marble disease autosomal dominant. Osteopetrosis is a rare genetic disease characterized by abnormally dense bone, due to defective resorption of immature bone. OPTA2 is the most common form of osteopetrosis, occurring in adolescence or adulthood.

Synonyms:

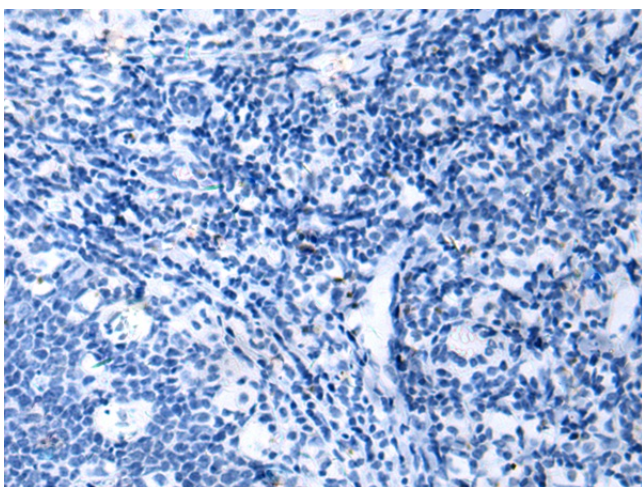
CLC-7; CLC7; FLJ26686; FLJ39644; FLJ46423; OPTA2; OPTB4

Product images:

Gel: 6%SDS-PAGE
Lysate: 40 µg
Lane 1-3: HepG2
A549
LOVO cell lysates
Primary antibody: TA369990 (CLCN7 Antibody) at dilution 1/500
Secondary antibody: Goat anti rabbit IgG at 1/5000 dilution
Exposure time: 2 minutes



Immunohistochemistry of paraffin-embedded Human esophagus cancer tissue using TA369990 (CLCN7 Antibody) at dilution 1/100 (Original magnification: ×200)



Immunohistochemistry of paraffin-embedded Human esophagus cancer tissue using TA369990 (CLCN7 Antibody) at dilution 1/100, treated with fusion protein. (Original magnification: $\times 200$)