

## Product datasheet for **TA369986**

### CKAP1 (TBCB) Rabbit Polyclonal Antibody

#### Product data:

Product Type:	Primary Antibodies
Applications:	IHC, WB
Recommended Dilution:	WB: 500-2000 WB positive control: Human cerebrum tissue lysate IHC: 20-100 Positive control: Human gastric cancer Predicted cell location: Cytoplasm
Reactivity:	Human, Mouse
Host:	Rabbit
Isotype:	IgG
Clonality:	Polyclonal
Immunogen:	Full length fusion protein
Formulation:	pH7.4 PBS, 0.05% NaN <sub>3</sub> , 40% Glycerol
Concentration:	lot specific
Purification:	Antigen affinity purification
Conjugation:	Unconjugated
Storage:	Store at -20°C.
Stability:	1 year
Predicted Protein Size:	27 kDa
Gene Name:	tubulin folding cofactor B
Database Link:	<a href="#">Entrez Gene 1155 Human Q99426</a>



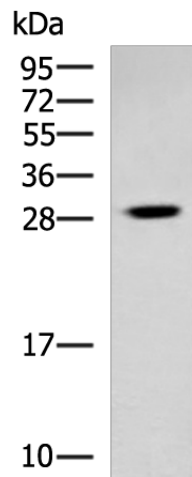
[View online »](#)

**Background:**

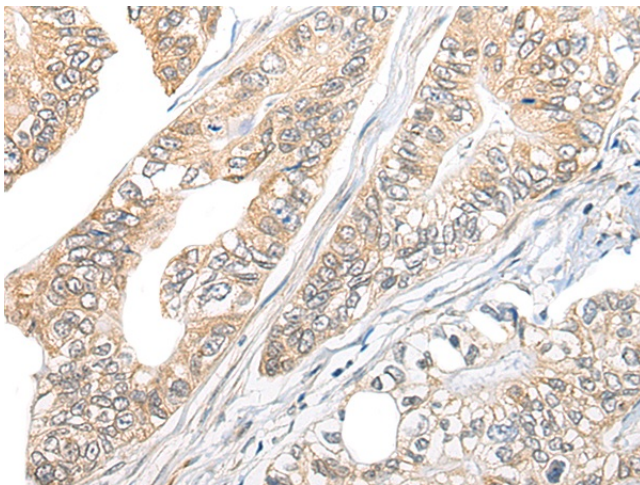
Microtubules, the primary component of the cytoskeletal network, are highly dynamic structures composed of  $\alpha/\beta$  Tubulin heterodimers. Biosynthesis of functional microtubules involve the participation of several chaperones, termed Tubulin folding cofactors A (TBCA), B (TBCB), D (TBCD), E (TBCE) and C (TBCC), that act on folding intermediates downstream of the cytosolic chaperon, alternatively named TCP. TBCB (tubulin folding cofactor B), also known as CG22, CKAP1 or CKAPI, is a 244 amino acid cytoplasmic protein containing one CAP-Gly domain and is widely expressed. TBCB is involved in the regulation of tubulin heterodimer dissociation and may function as a negative regulator of axonal growth.

**Synonyms:**

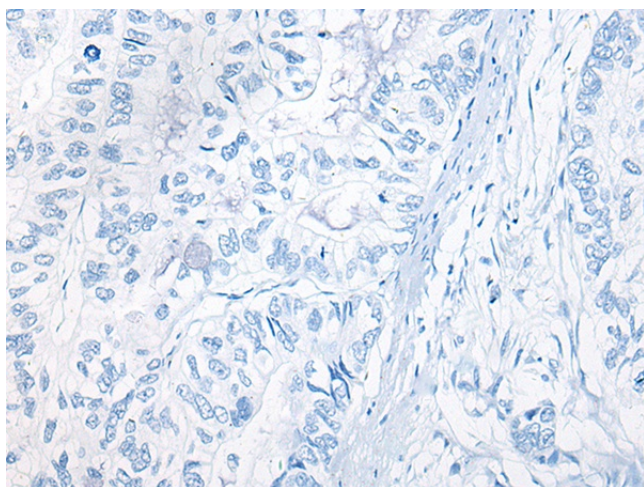
CG22; CKAP1; CKAPI

**Product images:**

Gel: 12%SDS-PAGE  
Lysate: 40  $\mu$ g  
Lane: Human cerebrum tissue lysate  
Primary antibody: TA369986 (TBCB Antibody) at dilution 1/800  
Secondary antibody: Goat anti rabbit IgG at 1/5000 dilution  
Exposure time: 20 seconds



Immunohistochemistry of paraffin-embedded Human gastric cancer tissue using TA369986 (TBCB Antibody) at dilution 1/25 (Original magnification:  $\times$ 200)



Immunohistochemistry of paraffin-embedded Human gastric cancer tissue using TA369986 (TBCB Antibody) at dilution 1/25, treated with fusion protein. (Original magnification:  $\times 200$ )