

## Product datasheet for **TA369972**

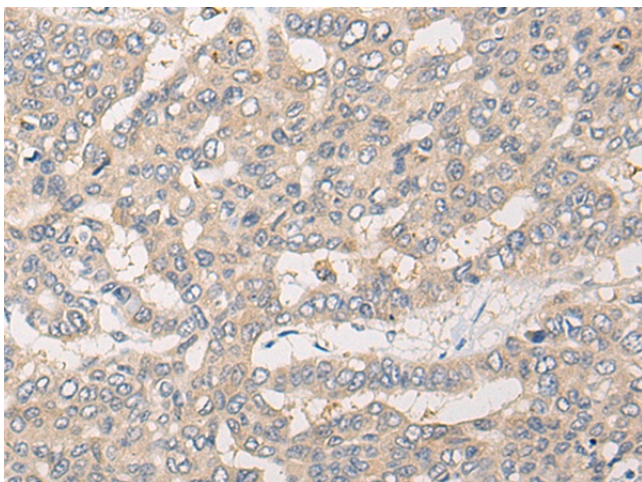
### Chloride Channel 5 (CLCN5) Rabbit Polyclonal Antibody

#### Product data:

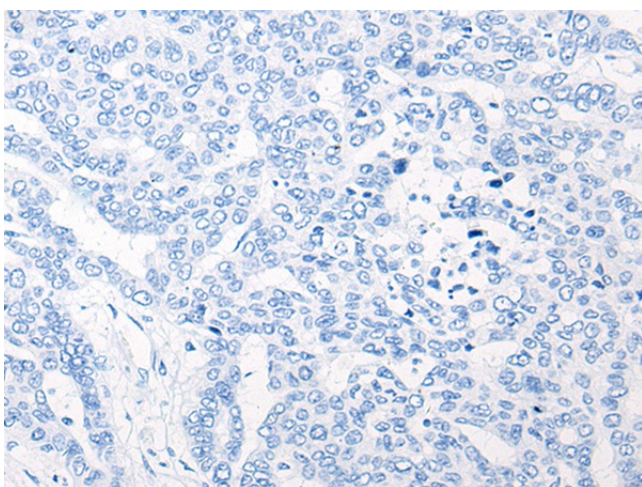
Product Type:	Primary Antibodies
Applications:	IHC
Recommended Dilution:	IHC: 25-100 Positive control: Human liver cancer Predicted cell location: Cytoplasm
Reactivity:	Human, Mouse, Rat
Host:	Rabbit
Isotype:	IgG
Clonality:	Polyclonal
Immunogen:	Fusion protein of human CLCN5
Formulation:	pH7.4 PBS, 0.05% NaN <sub>3</sub> , 40% Glycerol
Concentration:	lot specific
Purification:	Antigen affinity purification
Conjugation:	Unconjugated
Storage:	Store at -20°C.
Stability:	1 year
Gene Name:	chloride voltage-gated channel 5
Database Link:	<a href="#">Entrez Gene 1184 Human P51795</a>
Background:	This gene encodes a member of the CIC family of chloride ion channels and ion transporters. The encoded protein is primarily localized to endosomal membranes and may function to facilitate albumin uptake by the renal proximal tubule. Mutations in this gene have been found in Dent disease and renal tubular disorders complicated by nephrolithiasis. Alternatively spliced transcript variants have been found for this gene.
Synonyms:	CIC-5; CLC5; CLCK2; DENTS; hCIC-K2; hCIC-K2; NPHL1; NPHL2; OTTHUMP00000023279; OTTHUMP00000023281; XLRH; XRN



[View online »](#)

**Product images:**

Immunohistochemistry of paraffin-embedded Human liver cancer tissue using TA369972 (CLCN5 Antibody) at dilution 1/20 (Original magnification:  $\times 200$ )



Immunohistochemistry of paraffin-embedded Human liver cancer tissue using TA369972 (CLCN5 Antibody) at dilution 1/20, treated with fusion protein. (Original magnification:  $\times 200$ )