

Product datasheet for **TA369966**

CHCHD5 Rabbit Polyclonal Antibody

Product data:

Product Type:	Primary Antibodies
Applications:	IHC, WB
Recommended Dilution:	WB: 200-1000 WB positive control: A172 and 231 cell lysates IHC: 20-100 Positive control: Human gastric cancer Predicted cell location: Cytoplasm
Reactivity:	Human, Mouse
Host:	Rabbit
Isotype:	IgG
Clonality:	Polyclonal
Immunogen:	Full length fusion protein
Formulation:	pH7.4 PBS, 0.05% NaN ₃ , 40% Glycerol
Concentration:	lot specific
Purification:	Antigen affinity purification
Conjugation:	Unconjugated
Storage:	Store at -20°C.
Stability:	1 year
Predicted Protein Size:	12 kDa
Gene Name:	coiled-coil-helix-coiled-coil-helix domain containing 5
Database Link:	Entrez Gene 84269 Human Q9BSY4



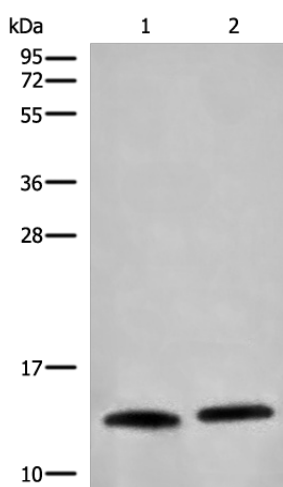
[View online »](#)

Background:

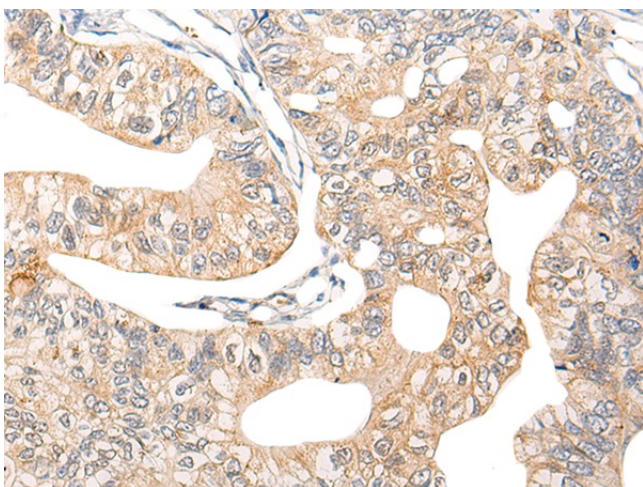
CHCHD5 (Coiled-coil-helix-coiled-coil-helix domain-containing protein 5) is a 110 amino acid protein that contains one CHCH domain. The gene encoding CHCHD5 maps to human chromosome 2, which consists of 237 million bases encoding over 1,400 genes and making up approximately 8% of the human genome. A number of genetic diseases are linked to genes on chromosome 2. Harlequin ichthyosis, a rare and morbid skin deformity, is associated with mutations in the ABCA12 gene. The lipid metabolic disorder sitosterolemia is associated with ABCG5 and ABCG8. An extremely rare recessive genetic disorder, Alström syndrome is due to mutations in the ALMS1 gene. Interestingly, chromosome 2 contains what appears to be a vestigial second centromere and vestigial telomeres which gives credence to the hypothesis that human chromosome 2 is the result of an ancient fusion of two ancestral chromosomes seen in modern form today in apes.

Synonyms:

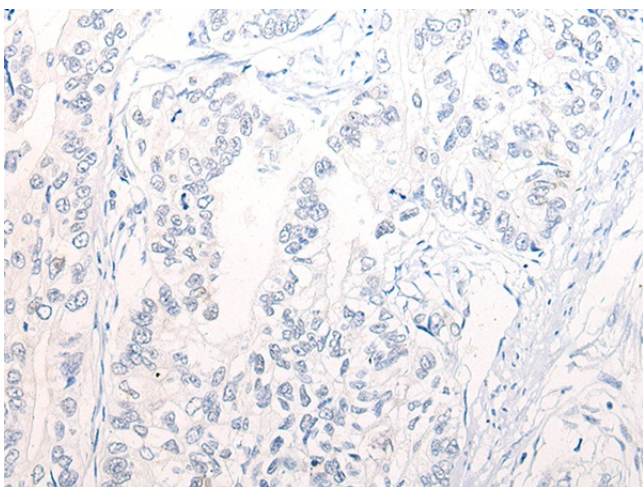
C2orf9; FLJ39671; MGC11104

Product images:

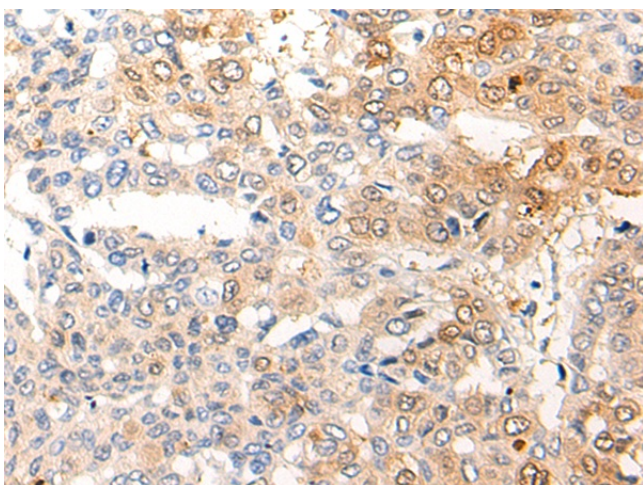
Gel: 12%SDS-PAGE
Lysate: 40 µg
Lane 1-2: A172 and 231 cell lysates
Primary antibody: TA369966 (CHCHD5 Antibody)
at dilution 1/250
Secondary antibody: Goat anti rabbit IgG at
1/8000 dilution
Exposure time: 1 minute



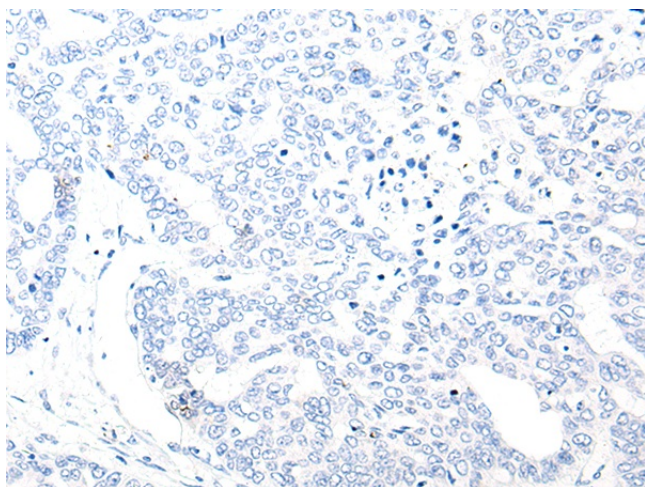
Immunohistochemistry of paraffin-embedded Human gastric cancer tissue using TA369966 (CHCHD5 Antibody) at dilution 1/20 (Original magnification: $\times 200$)



Immunohistochemistry of paraffin-embedded Human gastric cancer tissue using TA369966 (CHCHD5 Antibody) at dilution 1/20, treated with fusion protein. (Original magnification: $\times 200$)



Immunohistochemistry of paraffin-embedded Human liver cancer tissue using TA369966 (CHCHD5 Antibody) at dilution 1/20 (Original magnification: $\times 200$)



Immunohistochemistry of paraffin-embedded Human liver cancer tissue using TA369966 (CHCHD5 Antibody) at dilution 1/20, treated with fusion protein. (Original magnification: $\times 200$)