

Product datasheet for **TA369954S**

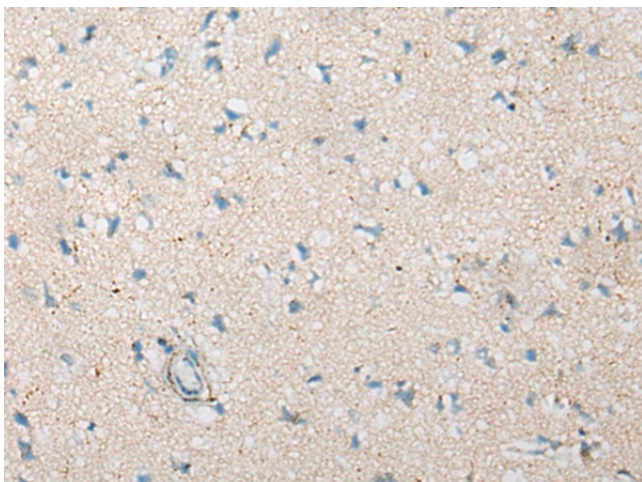
CEP70 Rabbit Polyclonal Antibody

Product data:

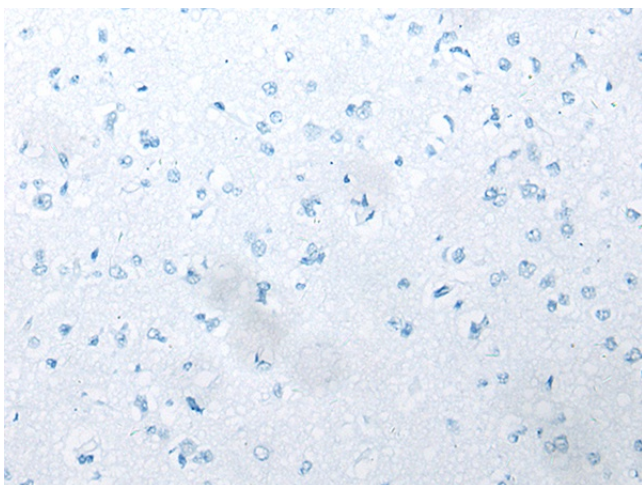
Product Type:	Primary Antibodies
Applications:	IHC
Recommended Dilution:	IHC: 20-100 Positive control: Human brain Predicted cell location: Cytoplasm
Reactivity:	Human
Host:	Rabbit
Isotype:	IgG
Clonality:	Polyclonal
Immunogen:	Fusion protein of human CEP70
Formulation:	pH7.4 PBS, 0.05% NaN ₃ , 40% Glycerol
Purification:	Antigen affinity purification
Conjugation:	Unconjugated
Storage:	Store at -20°C.
Stability:	1 year
Gene Name:	centrosomal protein 70
Database Link:	Entrez Gene 80321 Human Q8NHQ1
Background:	Plays a role in the organization of both preexisting and nascent microtubules in interphase cells. During mitosis, required for the organization and orientation of the mitotic spindle.
Synonyms:	BITE; FLJ13036



[View online »](#)

Product images:

Immunohistochemistry of paraffin-embedded Human brain tissue using [TA369954] (CEP70 Antibody) at dilution 1/35 (Original magnification: ×200)



Immunohistochemistry of paraffin-embedded Human brain tissue using [TA369954] (CEP70 Antibody) at dilution 1/35, treated with fusion protein. (Original magnification: ×200)