

## Product datasheet for **TA369954**

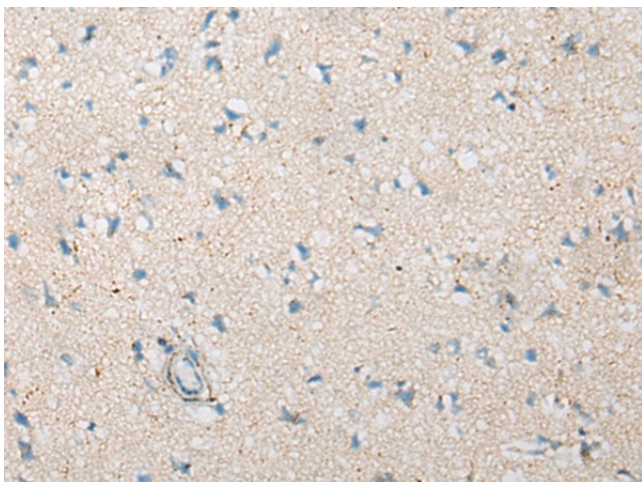
### CEP70 Rabbit Polyclonal Antibody

#### Product data:

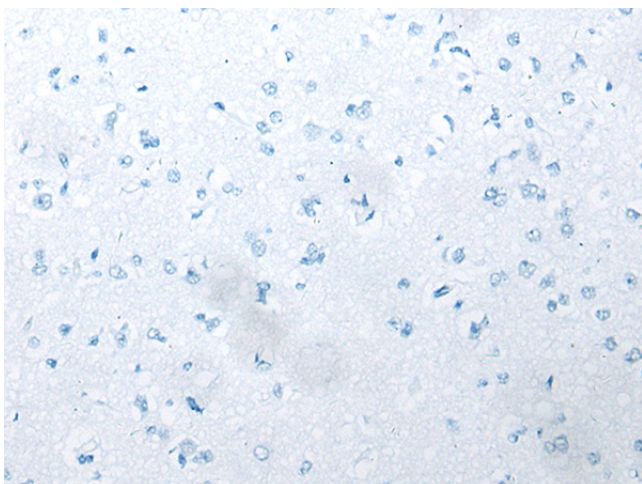
|                       |  |
|-----------------------|--|
| Product Type:         | Primary Antibodies   |
| Applications:         | IHC  |
| Recommended Dilution: | IHC: 20-100<br>Positive control: Human brain<br>Predicted cell location: Cytoplasm   |
| Reactivity:           | Human  |
| Host:                 | Rabbit   |
| Isotype:              | IgG  |
| Clonality:            | Polyclonal   |
| Immunogen:            | Fusion protein of human CEP70  |
| Formulation:          | pH7.4 PBS, 0.05% NaN <sub>3</sub> , 40% Glycerol   |
| Concentration:        | lot specific   |
| Purification:         | Antigen affinity purification  |
| Conjugation:          | Unconjugated   |
| Storage:              | Store at -20°C.  |
| Stability:            | 1 year   |
| Gene Name:            | centrosomal protein 70   |
| Database Link:        | <a href="#">Entrez Gene 80321 Human Q8NHQ1</a>   |
| Background:           | Plays a role in the organization of both preexisting and nascent microtubules in interphase cells. During mitosis, required for the organization and orientation of the mitotic spindle. |
| Synonyms:             | BITE; FLJ13036   |



[View online »](#)

**Product images:**

Immunohistochemistry of paraffin-embedded Human brain tissue using TA369954 (CEP70 Antibody) at dilution 1/35 (Original magnification: ×200)



Immunohistochemistry of paraffin-embedded Human brain tissue using TA369954 (CEP70 Antibody) at dilution 1/35, treated with fusion protein. (Original magnification: ×200)