

Product datasheet for **TA369953S**

CEP72 Rabbit Polyclonal Antibody

Product data:

Product Type:	Primary Antibodies
Applications:	IHC, WB
Recommended Dilution:	WB: 200-1000 WB positive control: TM4 NIH/3T3 and Jurkat cell lysates IHC: 30-150 Positive control: Human esophagus cancer Predicted cell location: Cytoplasm
Reactivity:	Human, Mouse
Host:	Rabbit
Isotype:	IgG
Clonality:	Polyclonal
Immunogen:	Fusion protein of human CEP72
Formulation:	pH7.4 PBS, 0.05% NaN ₃ , 40% Glycerol
Purification:	Antigen affinity purification
Conjugation:	Unconjugated
Storage:	Store at -20°C.
Stability:	1 year
Predicted Protein Size:	72 kDa
Gene Name:	centrosomal protein 72
Database Link:	Entrez Gene 55722 Human Q9P209



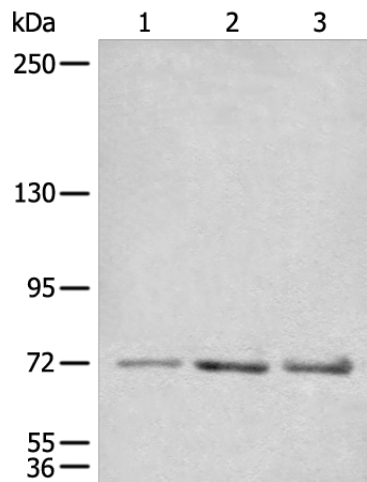
[View online »](#)

Background:

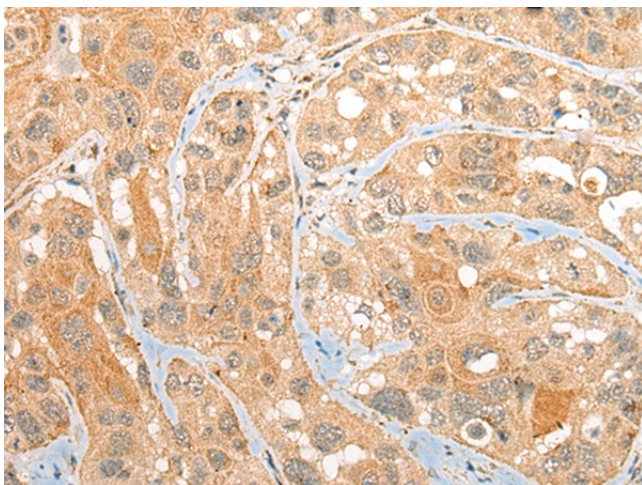
Centrosomes are the major microtubule-organizing centers of mammalian cells. They are composed of a centriole pair and surrounding microtubule-nucleating material termed pericentriolar material (PCM). Bipolar mitotic spindle assembly relies on two intertwined processes: centriole duplication and centrosome maturation. Failure to properly orchestrate centrosome duplication and maturation is subsequently linked to spindle defects, which can result in aneuploidy and promote cancer progression. CEP72 (centrosomal protein 72kDa) is a 647 amino acid protein that localizes to the centrosome and centrosome-surrounding particles throughout the cell cycle. Involved in the recruitment of key centrosomal proteins to the centrosome, CEP72 provides centrosomal microtubule-nucleation activity on the © Tubulin ring complexes and has critical roles in forming a focused bipolar spindle, which is needed for proper tension generation between sister chromatids. CEP72 exists as two alternatively spliced isoforms.

Synonyms:

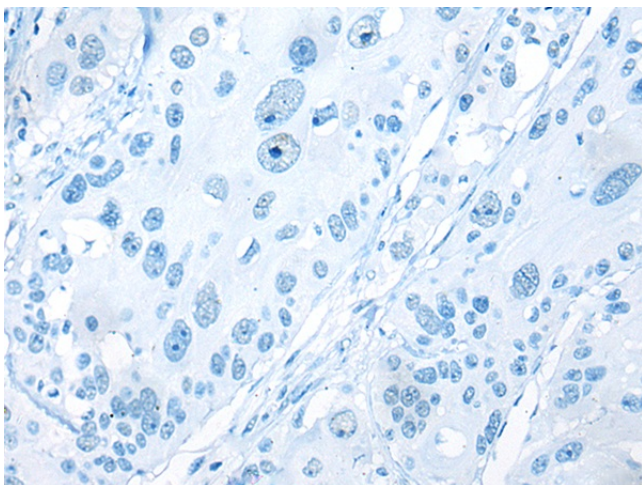
FLJ10565; KIAA1519; MGC5307

Product images:

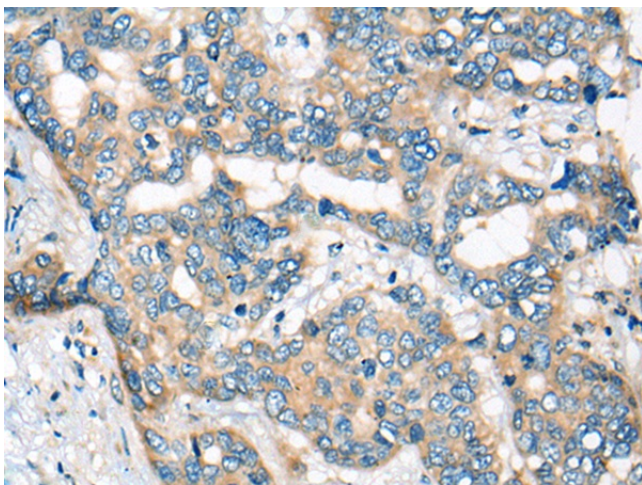
Gel: 6%SDS-PAGE
Lysate: 40 µg
Lane 1-3: TM4
NIH/3T3 and Jurkat cell lysates
Primary antibody: [TA369953] (CEP72 Antibody)
at dilution 1/600
Secondary antibody: Goat anti rabbit IgG at
1/8000 dilution
Exposure time: 1 minute



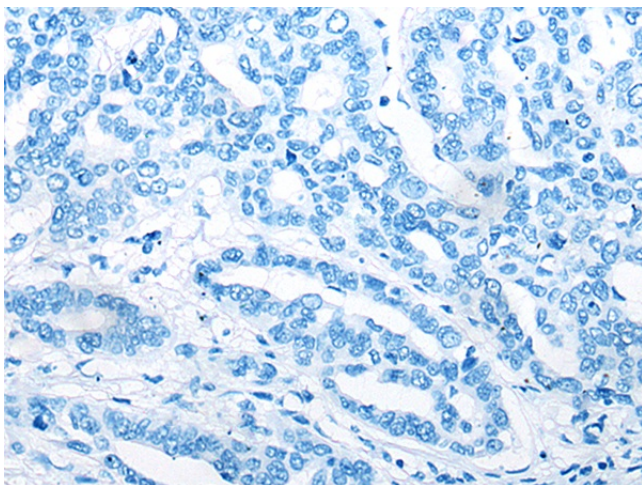
Immunohistochemistry of paraffin-embedded Human esophagus cancer tissue using [TA369953] (CEP72 Antibody) at dilution 1/40 (Original magnification: $\times 200$)



Immunohistochemistry of paraffin-embedded Human esophagus cancer tissue using [TA369953] (CEP72 Antibody) at dilution 1/40, treated with fusion protein. (Original magnification: $\times 200$)



Immunohistochemistry of paraffin-embedded Human liver cancer tissue using [TA369953] (CEP72 Antibody) at dilution 1/40 (Original magnification: $\times 200$)



Immunohistochemistry of paraffin-embedded Human liver cancer tissue using [TA369953] (CEP72 Antibody) at dilution 1/40, treated with fusion protein. (Original magnification: ×200)