

## Product datasheet for **TA369950S**

### **CENTB1 (ACAP1) Rabbit Polyclonal Antibody**

#### **Product data:**

Product Type:	Primary Antibodies
Applications:	IHC, WB
Recommended Dilution:	WB: 200-1000 WB positive control: Mouse lung tissue lysate IHC: 25-100 Positive control: Human thyroid cancer Predicted cell location: Cytoplasm
Reactivity:	Human, Mouse
Host:	Rabbit
Isotype:	IgG
Clonality:	Polyclonal
Immunogen:	Fusion protein of human ACAP1
Formulation:	pH7.4 PBS, 0.05% NaN <sub>3</sub> , 40% Glycerol
Purification:	Antigen affinity purification
Conjugation:	Unconjugated
Storage:	Store at -20°C.
Stability:	1 year
Predicted Protein Size:	82 kDa
Gene Name:	ArfGAP with coiled-coil, ankyrin repeat and PH domains 1
Database Link:	<a href="#">Entrez Gene 9744 Human Q15027</a>



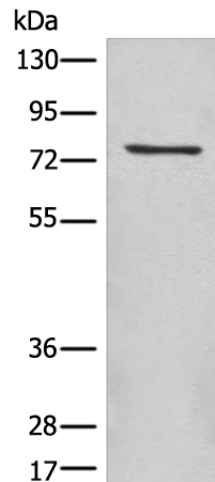
[View online »](#)

**Background:**

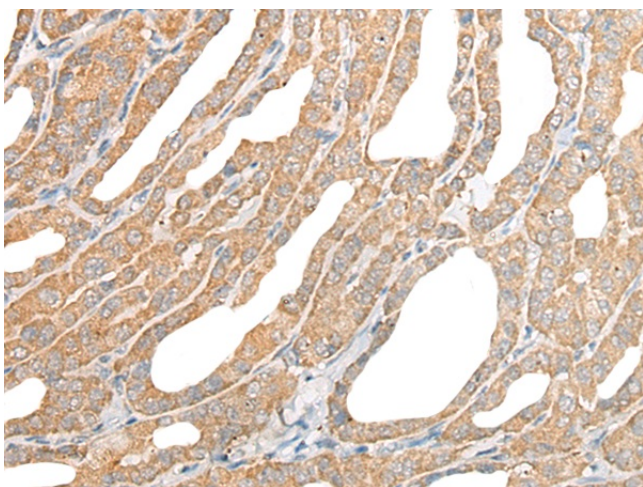
ACAP1, also designated Centaurin-f 1 (CENTB1 or Cnt-f1), is a member of the ADP ribosylation factor family of ARF6 GTPase-activating proteins (GAP). GAPs are important regulators of Arf function by controlling the return of ARF to its inactive state. ACAP1 is related to AGAP1 and ASAP1, and all three proteins are similarly expressed in fibroblast cells such as NIH/3T3. Internalization and recycling of integrin receptors is important in cell adhesion and migration modulation, and once inside a cell, proteins and membranes are transported to the endosome where they are sorted for recycling or degradation. ACAP1 promotes cargo sorting by associating directly to recycling cargo proteins. Preventing this interaction inhibits protein recycling. ACAP1 binds transferrin receptors, promoting their transport to the plasma membrane from the endosome. Akt induced phosphorylation of ACAP1 at Ser 554 regulates ACAP1 interaction to integrin in endosomes, and downregulation of Akt or ACAP1 may inhibit cell migration on Fibronectin.

**Synonyms:**

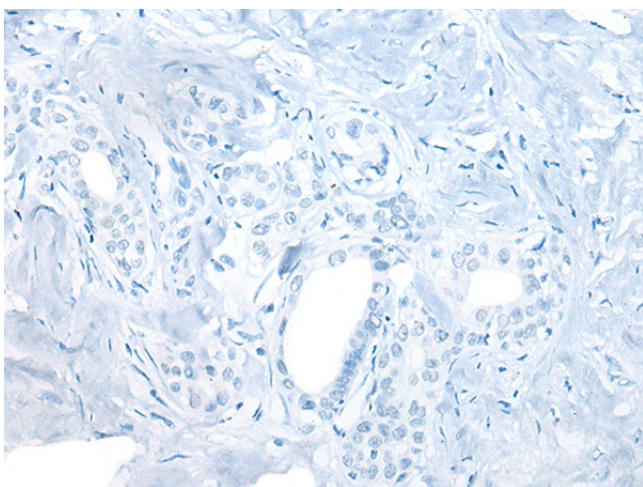
Centaurin-beta-1; CENTB1; Cnt-b1; KIAA0050

**Product images:**

Gel: 6%SDS-PAGE  
Lysate: 40 µg  
Lane: Mouse lung tissue lysate  
Primary antibody: [TA369950] (ACAP1 Antibody) at dilution 1/450  
Secondary antibody: Goat anti rabbit IgG at 1/8000 dilution  
Exposure time: 1 minute



Immunohistochemistry of paraffin-embedded Human thyroid cancer tissue using [TA369950] (ACAP1 Antibody) at dilution 1/25 (Original magnification: ×200)



Immunohistochemistry of paraffin-embedded Human thyroid cancer tissue using [TA369950] (ACAP1 Antibody) at dilution 1/25, treated with fusion protein. (Original magnification: ×200)