

Product datasheet for **TA369946**

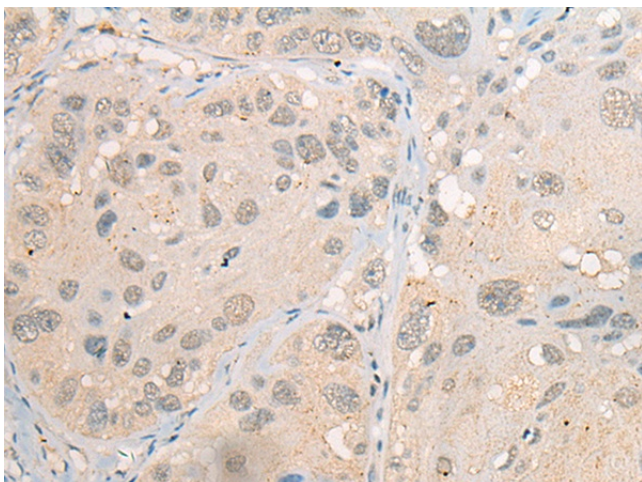
CDYL2 Rabbit Polyclonal Antibody

Product data:

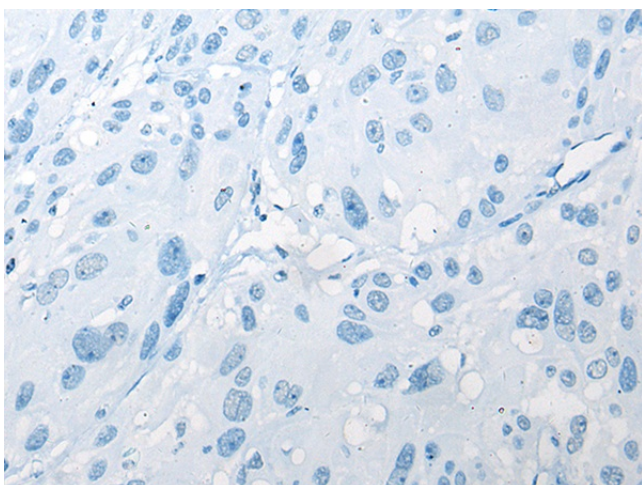
Product Type:	Primary Antibodies
Applications:	IHC
Recommended Dilution:	IHC: 20-100 Positive control: Human esophagus cancer Predicted cell location: Nucleus
Reactivity:	Human, Mouse
Host:	Rabbit
Isotype:	IgG
Clonality:	Polyclonal
Immunogen:	Fusion protein of human CDYL2
Formulation:	pH7.4 PBS, 0.05% NaN ₃ , 40% Glycerol
Concentration:	lot specific
Purification:	Antigen affinity purification
Conjugation:	Unconjugated
Storage:	Store at -20°C.
Stability:	1 year
Gene Name:	chromodomain protein, Y-like 2
Database Link:	Entrez Gene 124359 Human Q8N8U2
Background:	Chromodomain Y-like protein (CDYL) is a related ubiquitous nuclear protein expressed at moderate levels in most tissues. The gene encoding for the CDYL protein localizes to chromosome 6p25.1. CDYL2 contains 1 chromo domain. The exact function of CDYL2 remains unknown.
Synonyms:	FLJ38866

[View online »](#)

Product images:



Immunohistochemistry of paraffin-embedded Human esophagus cancer tissue using TA369946 (CDYL2 Antibody) at dilution 1/20 (Original magnification: $\times 200$)



Immunohistochemistry of paraffin-embedded Human esophagus cancer tissue using TA369946 (CDYL2 Antibody) at dilution 1/20, treated with fusion protein. (Original magnification: $\times 200$)