

Product datasheet for **TA369927S**

B7-2 (CD86) Rabbit Polyclonal Antibody

Product data:

Product Type:	Primary Antibodies
Applications:	IHC, WB
Recommended Dilution:	WB: 500-2000 WB positive control: Human lymph gland tissue and Jurkat cell lysates IHC: 25-100 Positive control: Human gastric cancer Predicted cell location: Cytoplasm and Cell membrane
Reactivity:	Human
Host:	Rabbit
Isotype:	IgG
Clonality:	Polyclonal
Immunogen:	Fusion protein of human CD86
Formulation:	pH7.4 PBS, 0.05% NaN ₃ , 40% Glycerol
Purification:	Antigen affinity purification
Conjugation:	Unconjugated
Storage:	Store at -20°C.
Stability:	1 year
Predicted Protein Size:	38 kDa
Gene Name:	CD86 molecule
Database Link:	Entrez Gene 942 Human P42081

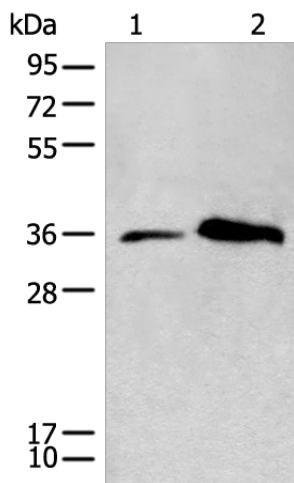
Background: This gene encodes a type I membrane protein that is a member of the immunoglobulin superfamily. This protein is expressed by antigen-presenting cells, and it is the ligand for two proteins at the cell surface of T cells, CD28 antigen and cytotoxic T-lymphocyte-associated protein 4. Binding of this protein with CD28 antigen is a costimulatory signal for activation of the T-cell. Binding of this protein with cytotoxic T-lymphocyte-associated protein 4 negatively regulates T-cell activation and diminishes the immune response. Alternative splicing results in several transcript variants encoding different isoforms.



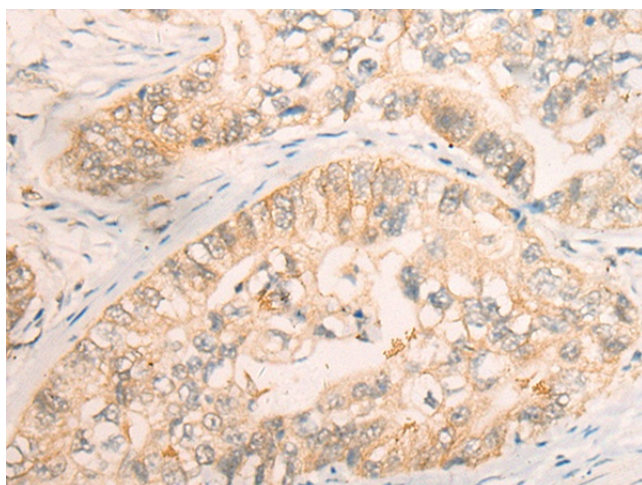
[View online »](#)

Synonyms: B7-2; B70; BU63; CD28LG2; FUN-1; LAB72; MGC34413

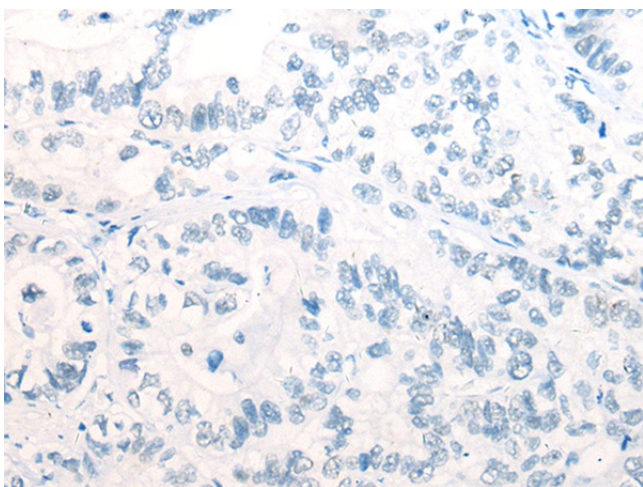
Product images:



Gel: 12%SDS-PAGE
 Lysate: 40 µg
 Lane 1-2: Human lymph gland tissue and Jurkat cell lysates
 Primary antibody: [TA369927] (CD86 Antibody) at dilution 1/450
 Secondary antibody: Goat anti rabbit IgG at 1/8000 dilution
 Exposure time: 1 minute



Immunohistochemistry of paraffin-embedded Human gastric cancer tissue using [TA369927] (CD86 Antibody) at dilution 1/30 (Original magnification: ×200)



Immunohistochemistry of paraffin-embedded Human gastric cancer tissue using [TA369927] (CD86 Antibody) at dilution 1/30, treated with fusion protein. (Original magnification: $\times 200$)