

Product datasheet for **TA369926**

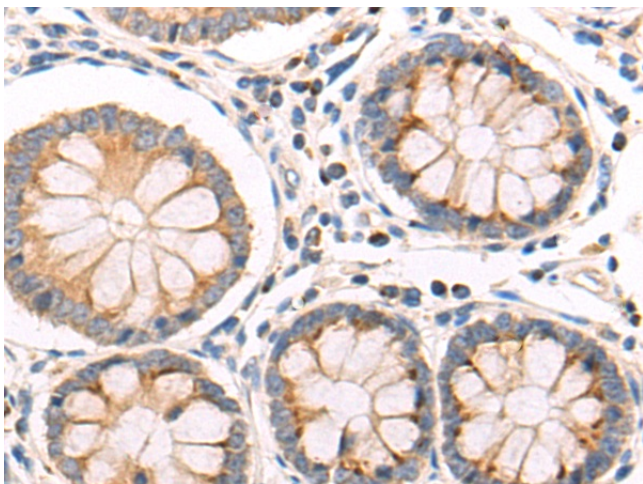
CDw75 (ST6GAL1) Rabbit Polyclonal Antibody

Product data:

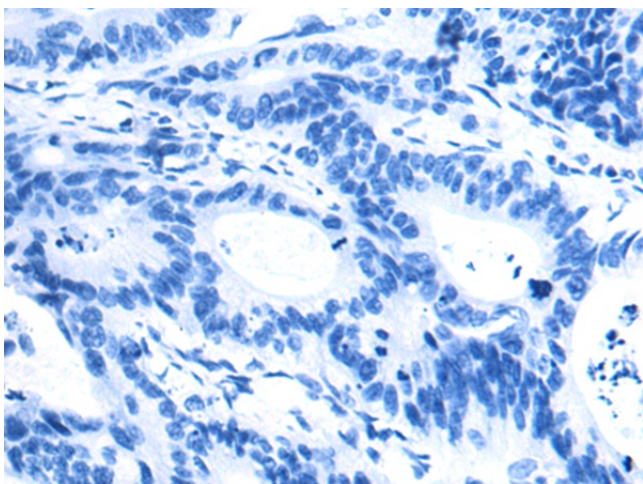
Product Type:	Primary Antibodies
Applications:	IHC
Recommended Dilution:	IHC: 50-200 Positive control: Human colorectal cancer Predicted cell location: Cytoplasm
Reactivity:	Human, Mouse, Rat
Host:	Rabbit
Isotype:	IgG
Clonality:	Polyclonal
Immunogen:	Fusion protein of human ST6GAL1
Formulation:	pH7.4 PBS, 0.05% NaN ₃ , 40% Glycerol
Concentration:	lot specific
Purification:	Antigen affinity purification
Conjugation:	Unconjugated
Storage:	Store at -20°C.
Stability:	1 year
Gene Name:	ST6 beta-galactoside alpha-2,6-sialyltransferase 1
Database Link:	Entrez Gene 6480 Human P15907
Background:	This gene encodes a member of glycosyltransferase family 29. The encoded protein is a type II membrane protein that catalyzes the transfer of sialic acid from CMP-sialic acid to galactose-containing substrates. The protein, which is normally found in the Golgi but can be proteolytically processed to a soluble form, is involved in the generation of the cell-surface carbohydrate determinants and differentiation antigens HB-6, CD75, and CD76. This gene has been incorrectly referred to as CD75. Alternative splicing results in multiple transcript variants.
Synonyms:	CMP-N-acetylneuraminic acid-beta-galactosyltransferase-2; MGC48859; OTTHUMP00000210002; SIAT1; ST6Gal1; ST6N



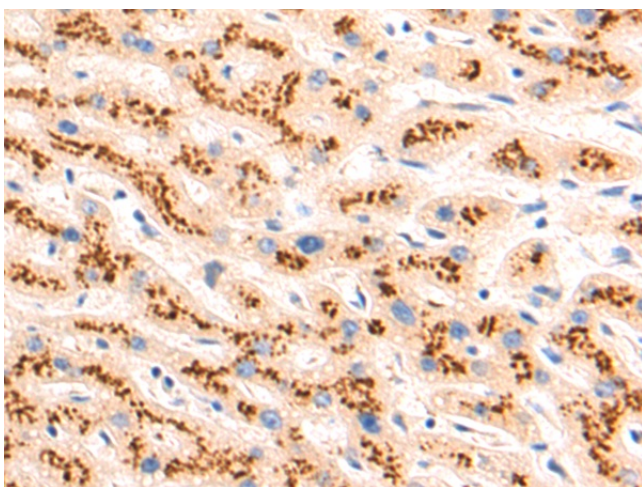
[View online »](#)

Product images:

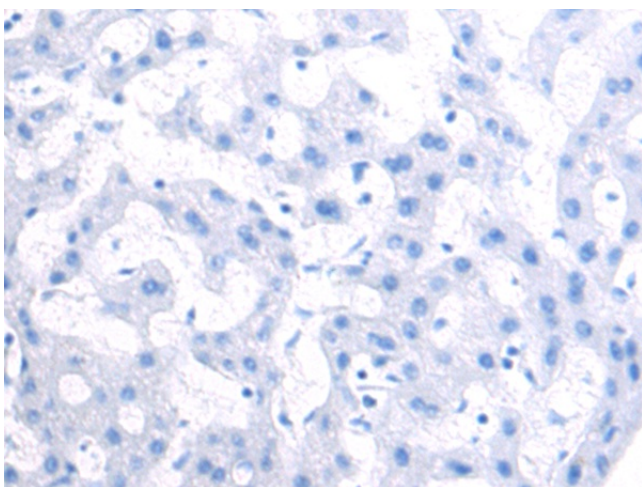
Immunohistochemistry of paraffin-embedded Human colorectal cancer tissue using TA369926 (ST6GAL1 Antibody) at dilution 1/55 (Original magnification: $\times 200$)



Immunohistochemistry of paraffin-embedded Human colorectal cancer tissue using TA369926 (ST6GAL1 Antibody) at dilution 1/55, treated with fusion protein. (Original magnification: $\times 200$)



Immunohistochemistry of paraffin-embedded Human liver cancer tissue using TA369926 (ST6GAL1 Antibody) at dilution 1/55 (Original magnification: ×200)



Immunohistochemistry of paraffin-embedded Human liver cancer tissue using TA369926 (ST6GAL1 Antibody) at dilution 1/55, treated with fusion protein. (Original magnification: ×200)