

Product datasheet for **TA369922S**

CCT6B Rabbit Polyclonal Antibody

Product data:

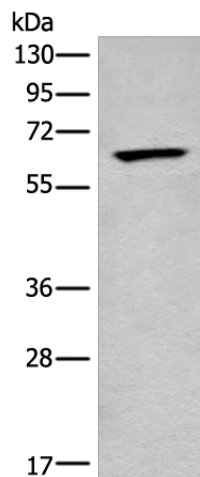
| | |
|-------------------------|--|
| Product Type: | Primary Antibodies |
| Applications: | IHC, WB |
| Recommended Dilution: | WB: 200-1000 WB positive control: A549 cell lysate IHC: 30-150 Positive control: Human liver cancer Predicted cell location: Cytoplasm |
| Reactivity: | Human, Mouse |
| Host: | Rabbit |
| Isotype: | IgG |
| Clonality: | Polyclonal |
| Immunogen: | Fusion protein of human CCT6B |
| Formulation: | pH7.4 PBS, 0.05% NaN ₃ , 40% Glycerol |
| Purification: | Antigen affinity purification |
| Conjugation: | Unconjugated |
| Storage: | Store at -20°C. |
| Stability: | 1 year |
| Predicted Protein Size: | 58 kDa |
| Gene Name: | chaperonin containing TCP1 subunit 6B |
| Database Link: | Entrez Gene 10693 Human Q92526 |

Background: This gene encodes a molecular chaperone that is a member of the chaperonin-containing TCP1 complex (CCT), also known as the TCP1 ring complex (TRiC). This complex consists of two identical stacked rings, each containing eight different proteins. Unfolded polypeptides enter the central cavity of the complex and are folded in an ATP-dependent manner. The complex folds various proteins, including actin and tubulin. Alternative splicing results in multiple transcript variants.

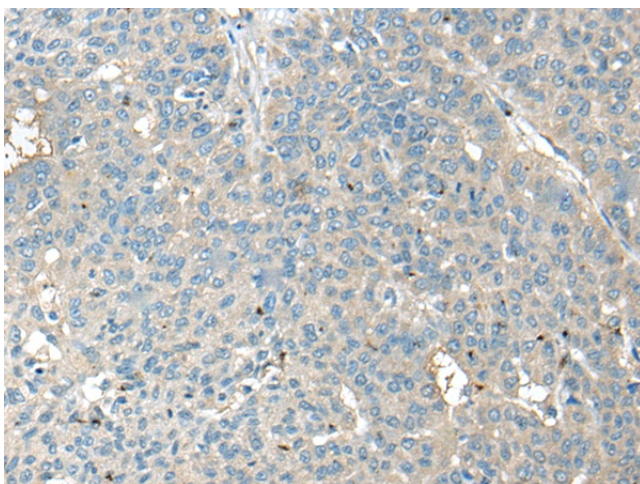
Synonyms: CCT-zeta-2; CCT-zeta-like; CCTZ-2; Cctz2; TCP-1-zeta-2; TCP-1-zeta-like; TSA303



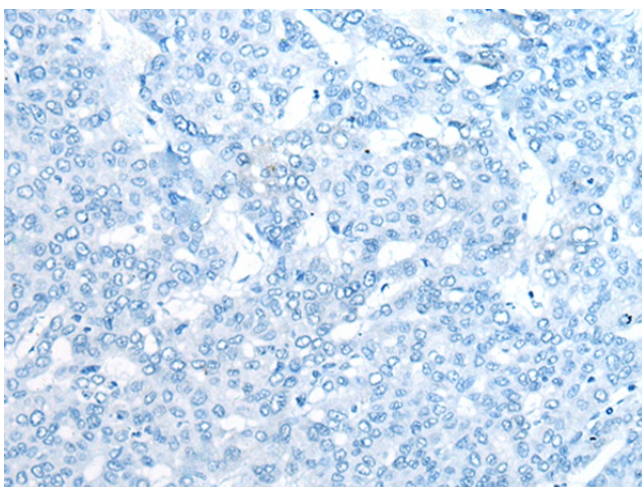
[View online »](#)

Product images:

Gel: 8%SDS-PAGE
Lysate: 40 μ g
Lane: A549 cell lysate
Primary antibody: [TA369922] (CCT6B Antibody) at dilution 1/250
Secondary antibody: Goat anti rabbit IgG at 1/8000 dilution
Exposure time: 25 seconds



Immunohistochemistry of paraffin-embedded Human liver cancer tissue using [TA369922] (CCT6B Antibody) at dilution 1/40 (Original magnification: \times 200)



Immunohistochemistry of paraffin-embedded Human liver cancer tissue using [TA369922] (CCT6B Antibody) at dilution 1/40, treated with fusion protein. (Original magnification: ×200)