

Product datasheet for **TA369922**

CCT6B Rabbit Polyclonal Antibody

Product data:

Product Type:	Primary Antibodies
Applications:	IHC, WB
Recommended Dilution:	WB: 200-1000 WB positive control: A549 cell lysate IHC: 30-150 Positive control: Human liver cancer Predicted cell location: Cytoplasm
Reactivity:	Human, Mouse
Host:	Rabbit
Isotype:	IgG
Clonality:	Polyclonal
Immunogen:	Fusion protein of human CCT6B
Formulation:	pH7.4 PBS, 0.05% NaN ₃ , 40% Glycerol
Concentration:	lot specific
Purification:	Antigen affinity purification
Conjugation:	Unconjugated
Storage:	Store at -20°C.
Stability:	1 year
Predicted Protein Size:	58 kDa
Gene Name:	chaperonin containing TCP1 subunit 6B
Database Link:	Entrez Gene 10693 Human Q92526

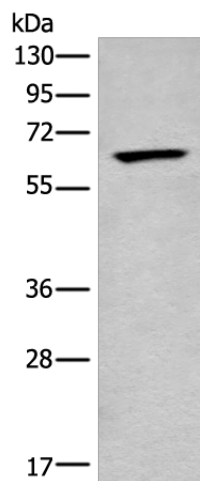
Background: This gene encodes a molecular chaperone that is a member of the chaperonin-containing TCP1 complex (CCT), also known as the TCP1 ring complex (TRiC). This complex consists of two identical stacked rings, each containing eight different proteins. Unfolded polypeptides enter the central cavity of the complex and are folded in an ATP-dependent manner. The complex folds various proteins, including actin and tubulin. Alternative splicing results in multiple transcript variants.



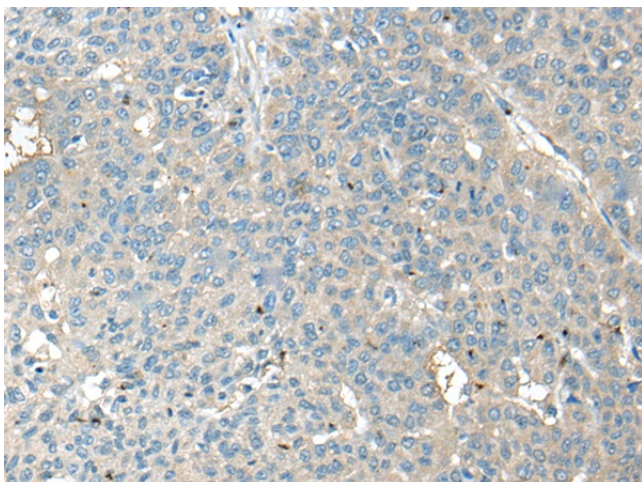
[View online »](#)

Synonyms: CCT-zeta-2; CCT-zeta-like; CCTZ-2; Cctz2; TCP-1-zeta-2; TCP-1-zeta-like; TSA303

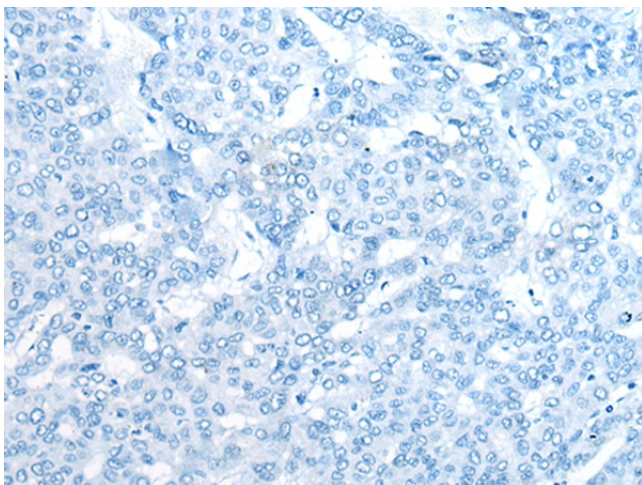
Product images:



Gel: 8%SDS-PAGE
Lysate: 40 μ g
Lane: A549 cell lysate
Primary antibody: TA369922 (CCT6B Antibody) at dilution 1/250
Secondary antibody: Goat anti rabbit IgG at 1/8000 dilution
Exposure time: 25 seconds



Immunohistochemistry of paraffin-embedded Human liver cancer tissue using TA369922 (CCT6B Antibody) at dilution 1/40 (Original magnification: \times 200)



Immunohistochemistry of paraffin-embedded Human liver cancer tissue using TA369922 (CCT6B Antibody) at dilution 1/40, treated with fusion protein. (Original magnification: ×200)