

Product datasheet for **TA369918**

CCDC120 Rabbit Polyclonal Antibody

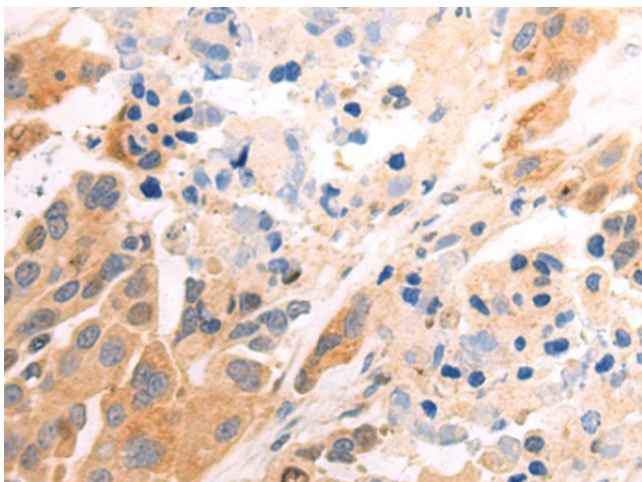
Product data:

| | |
|-----------------------|---|
| Product Type: | Primary Antibodies |
| Applications: | IHC |
| Recommended Dilution: | IHC: 50-200 Positive control: Human colorectal cancer Predicted cell location: Cytoplasm |
| Reactivity: | Human, Mouse |
| Host: | Rabbit |
| Isotype: | IgG |
| Clonality: | Polyclonal |
| Immunogen: | Fusion protein of human CCDC120 |
| Formulation: | pH7.4 PBS, 0.05% NaN ₃ , 40% Glycerol |
| Concentration: | lot specific |
| Purification: | Antigen affinity purification |
| Conjugation: | Unconjugated |
| Storage: | Store at -20°C. |
| Stability: | 1 year |
| Gene Name: | coiled-coil domain containing 120 |
| Database Link: | Entrez Gene 90060 Human Q96HB5 |
| Background: | This gene encodes a protein that contains a coiled-coil domain. Several alternatively spliced transcript variants encoding multiple isoforms have been found for this gene. |
| Synonyms: | JM11 |

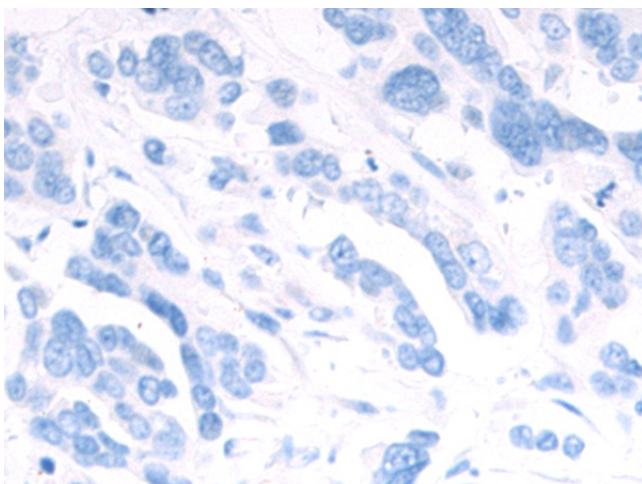


[View online »](#)

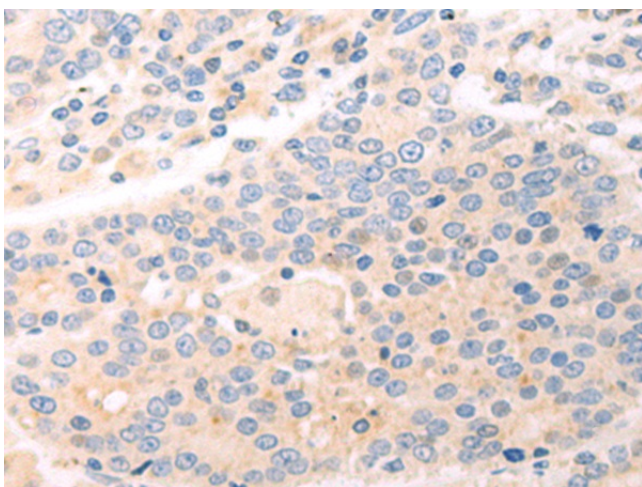
Product images:



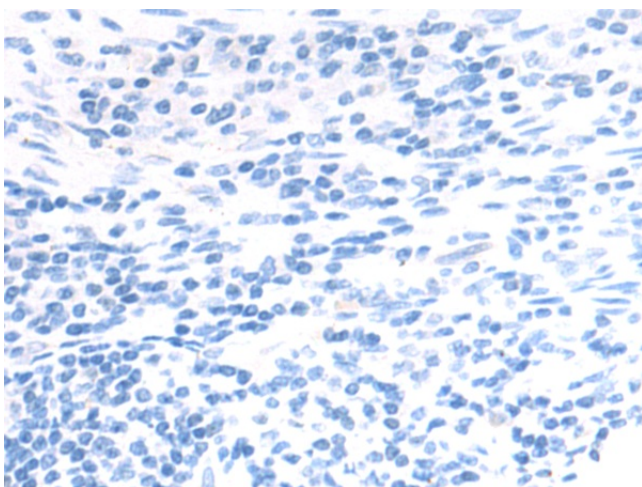
Immunohistochemistry of paraffin-embedded Human colorectal cancer tissue using TA369918 (CCDC120 Antibody) at dilution 1/85 (Original magnification: $\times 200$)



Immunohistochemistry of paraffin-embedded Human colorectal cancer tissue using TA369918 (CCDC120 Antibody) at dilution 1/85, treated with fusion protein. (Original magnification: $\times 200$)



Immunohistochemistry of paraffin-embedded Human gastric cancer tissue using TA369918 (CCDC120 Antibody) at dilution 1/85 (Original magnification: ×200)



Immunohistochemistry of paraffin-embedded Human gastric cancer tissue using TA369918 (CCDC120 Antibody) at dilution 1/85, treated with fusion protein. (Original magnification: ×200)