

Product datasheet for **TA369910**

CBARA1 (MICU1) Rabbit Polyclonal Antibody

Product data:

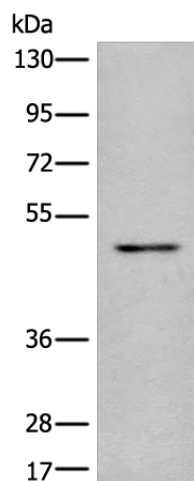
Product Type:	Primary Antibodies
Applications:	IHC, WB
Recommended Dilution:	WB: 200-1000 WB positive control: HUVEC cell lysate IHC: 25-100 Positive control: Human thyroid cancer Predicted cell location: Cytoplasm and Nucleus
Reactivity:	Human, Mouse, Rat
Host:	Rabbit
Isotype:	IgG
Clonality:	Polyclonal
Immunogen:	Fusion protein of human MICU1
Formulation:	pH7.4 PBS, 0.05% NaN ₃ , 40% Glycerol
Concentration:	lot specific
Purification:	Antigen affinity purification
Conjugation:	Unconjugated
Storage:	Store at -20°C.
Stability:	1 year
Predicted Protein Size:	54 kDa
Gene Name:	mitochondrial calcium uptake 1
Database Link:	Entrez Gene 10367 Human Q9BPX6
Background:	This gene encodes an essential regulator of mitochondrial Ca ²⁺ uptake under basal conditions. The encoded protein interacts with the mitochondrial calcium uniporter, a mitochondrial inner membrane Ca ²⁺ channel, and is essential in preventing mitochondrial Ca ²⁺ overload, which can cause excessive production of reactive oxygen species and cell stress. Alternatively spliced transcript variants encoding different isoforms have been described.



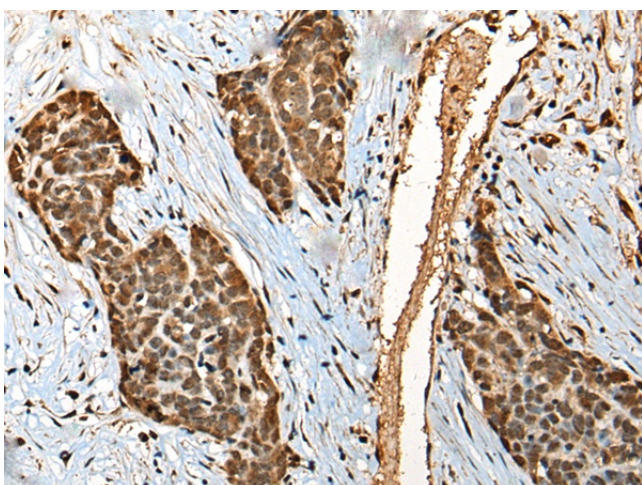
[View online »](#)

Synonyms: C730016L05Rik; Calc; Cbara1

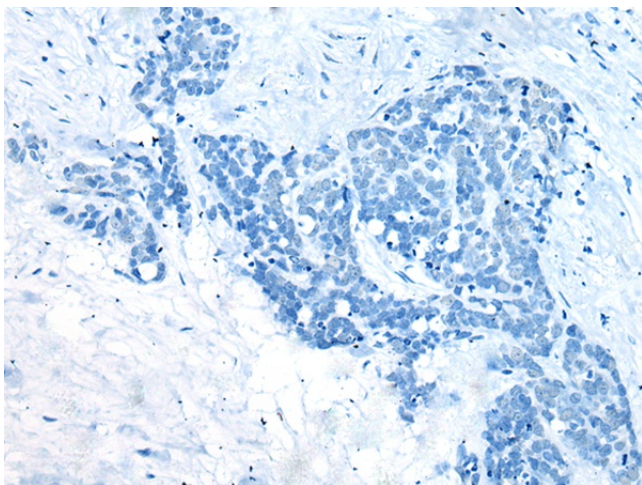
Product images:



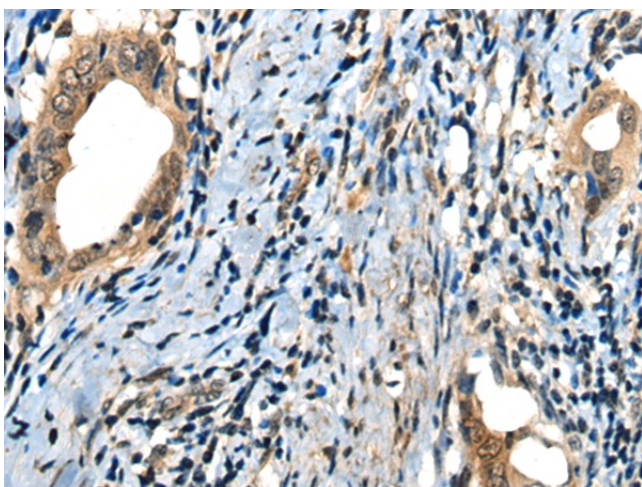
Gel: 8%SDS-PAGE
Lysate: 40 μ g
Lane: HUVEC cell lysate
Primary antibody: TA369910 (MICU1 Antibody) at dilution 1/350
Secondary antibody: Goat anti rabbit IgG at 1/8000 dilution
Exposure time: 1 minute



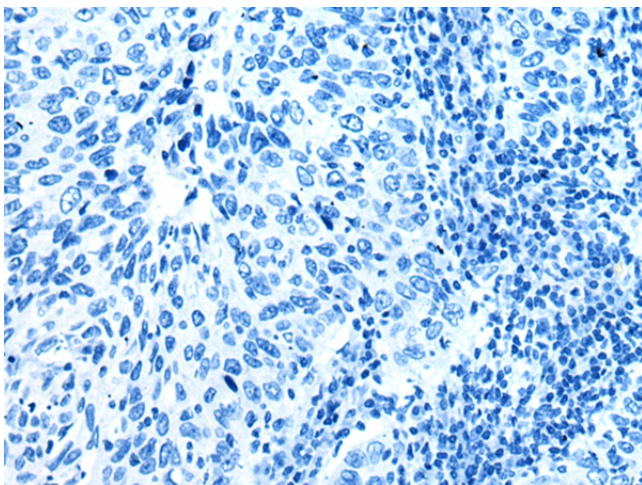
Immunohistochemistry of paraffin-embedded Human thyroid cancer tissue using TA369910 (MICU1 Antibody) at dilution 1/35 (Original magnification: \times 200)



Immunohistochemistry of paraffin-embedded Human thyroid cancer tissue using TA369910 (MICU1 Antibody) at dilution 1/35, treated with fusion protein. (Original magnification: ×200)



Immunohistochemistry of paraffin-embedded Human cervical cancer tissue using TA369910 (MICU1 Antibody) at dilution 1/35 (Original magnification: ×200)



Immunohistochemistry of paraffin-embedded Human cervical cancer tissue using TA369910 (MICU1 Antibody) at dilution 1/35, treated with fusion protein. (Original magnification: ×200)