

Product datasheet for **TA369896S**

Clusterin (CLU) Rabbit Polyclonal Antibody

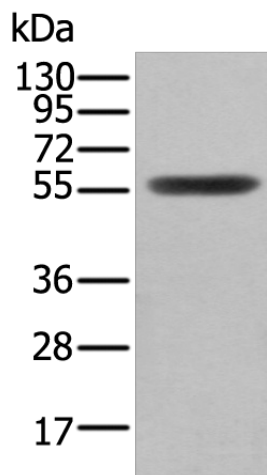
Product data:

Product Type:	Primary Antibodies
Applications:	IHC, WB
Recommended Dilution:	WB: 200-1000 WB positive control: Human fetal brain tissue lysate IHC: 30-150 Positive control: Human liver cancer Predicted cell location: Cytoplasm
Reactivity:	Human, Rat
Host:	Rabbit
Isotype:	IgG
Clonality:	Polyclonal
Immunogen:	Fusion protein of human CLU/APO J
Formulation:	pH7.4 PBS, 0.05% NaN ₃ , 40% Glycerol
Purification:	Antigen affinity purification
Conjugation:	Unconjugated
Storage:	Store at -20°C.
Stability:	1 year
Predicted Protein Size:	52 kDa
Gene Name:	clusterin
Database Link:	Entrez Gene 1191 Human P10909
Background:	The protein encoded by this gene is a secreted chaperone that can under some stress conditions also be found in the cell cytosol. It has been suggested to be involved in several basic biological events such as cell death, tumor progression, and neurodegenerative disorders. Alternate splicing results in both coding and non-coding variants.
Synonyms:	AAG4; Apo-J; APOJ; CLI; clusterin; KUB1; MGC24903; NA1/NA2; SGP-2; SGP2; SP-40; TRPM-2; TRPM2

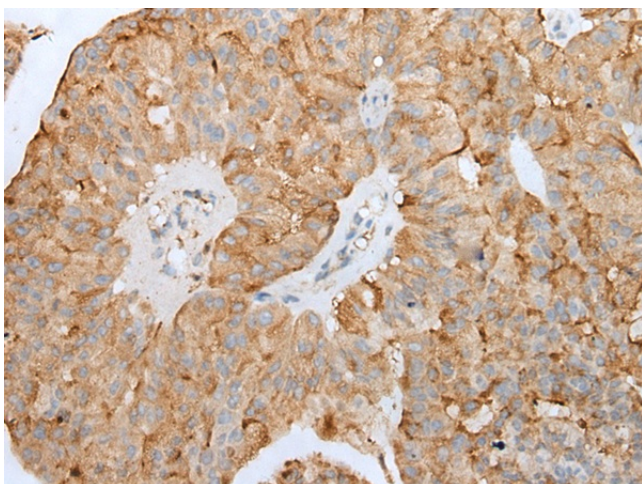


[View online »](#)

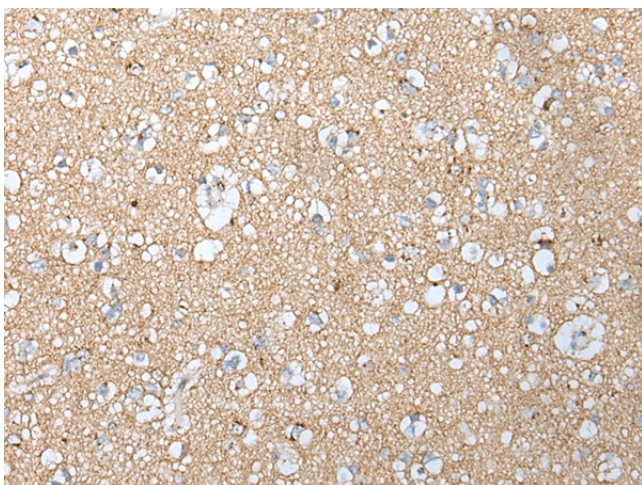
Product images:



Gel: 8%SDS-PAGE
Lysate: 40 µg
Lane: Human fetal brain tissue lysate
Primary antibody: [TA369896] (CLU/APO J Antibody) at dilution 1/400
Secondary antibody: Goat anti rabbit IgG at 1/8000 dilution
Exposure time: 30 seconds



Immunohistochemistry of paraffin-embedded Human liver cancer tissue using [TA369896] (CLU/APO J Antibody) at dilution 1/45. (Original magnification: ×200)



Immunohistochemistry of paraffin-embedded Human brain tissue using [TA369896] (CLU/APO J Antibody) at dilution 1/45. (Original magnification: ×200)