

Product datasheet for **TA369894**

CAGE1 Rabbit Polyclonal Antibody

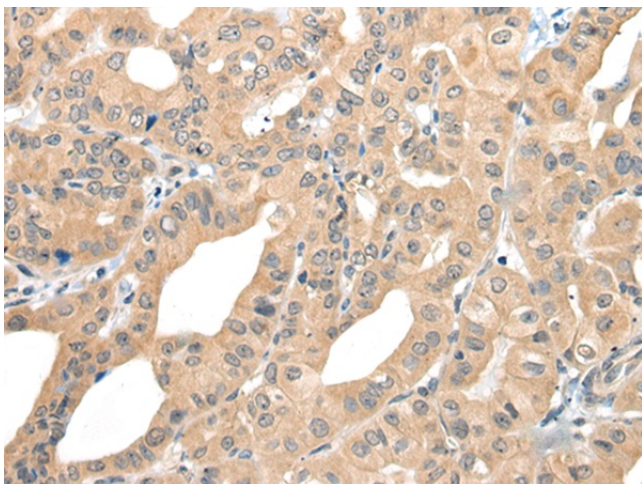
Product data:

Product Type:	Primary Antibodies
Applications:	IHC
Recommended Dilution:	IHC: 30-150 Positive control: Human thyroid cancer Predicted cell location: Cytoplasm
Reactivity:	Human
Host:	Rabbit
Isotype:	IgG
Clonality:	Polyclonal
Immunogen:	Fusion protein of human CAGE1
Formulation:	pH7.4 PBS, 0.05% NaN ₃ , 40% Glycerol
Concentration:	lot specific
Purification:	Antigen affinity purification
Conjugation:	Unconjugated
Storage:	Store at -20°C.
Stability:	1 year
Gene Name:	cancer antigen 1
Database Link:	Entrez Gene 285782 Human Q8TC20
Background:	Cancer-associated gene 1 protein (CAGE1) is initially identified as a cancer/testis antigen. CAGE1 is mainly a nuclear protein that displays high expression in testis among normal tissues, and wide expression in various cancer tissues and cancer cell lines. CAGE1 may be associated with tumor progression, while the exact function of CAGE-1 is not well understood.
Synonyms:	bA69L16.7; CAGE-1; CT3; CT95; CTAG3; FLJ40441

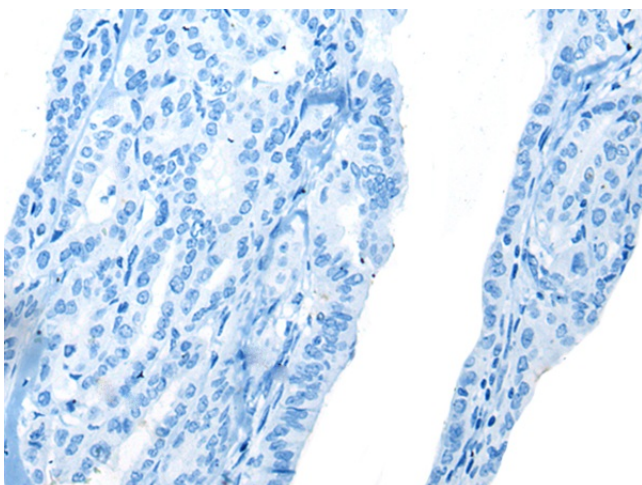


[View online »](#)

Product images:



Immunohistochemistry of paraffin-embedded Human thyroid cancer tissue using TA369894 (CAGE1 Antibody) at dilution 1/35 (Original magnification: ×200)



Immunohistochemistry of paraffin-embedded Human thyroid cancer tissue using TA369894 (CAGE1 Antibody) at dilution 1/35, treated with fusion protein. (Original magnification: ×200)