

Product datasheet for **TA369880S**

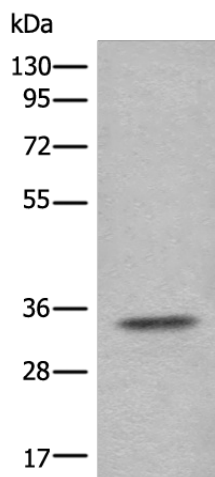
CFAP298 Rabbit Polyclonal Antibody

Product data:

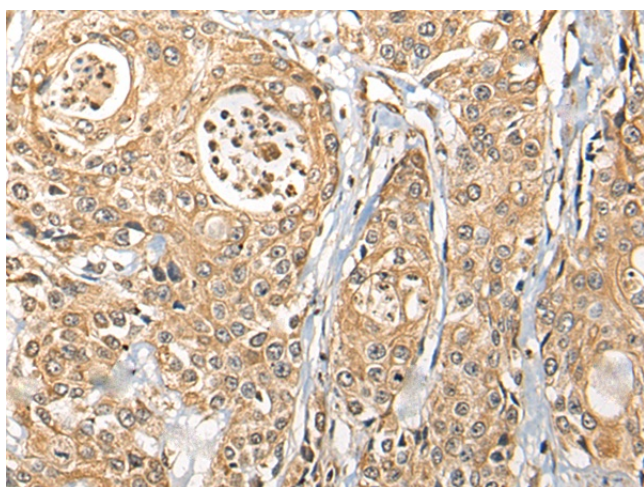
| | |
|-------------------------|--|
| Product Type: | Primary Antibodies |
| Applications: | IHC, WB |
| Recommended Dilution: | WB: 200-1000 WB positive control: Human testis tissue lysate IHC: 25-100 Positive control: Human prostate cancer Predicted cell location: Cytoplasm |
| Reactivity: | Human, Mouse, Rat |
| Host: | Rabbit |
| Isotype: | IgG |
| Clonality: | Polyclonal |
| Immunogen: | Fusion protein of human CFAP298 |
| Formulation: | pH7.4 PBS, 0.05% NaN ₃ , 40% Glycerol |
| Purification: | Antigen affinity purification |
| Conjugation: | Unconjugated |
| Storage: | Store at -20°C. |
| Stability: | 1 year |
| Predicted Protein Size: | 33 kDa |
| Gene Name: | chromosome 21 open reading frame 59 |
| Database Link: | Entrez Gene 56683 Human P57076 |
| Background: | This gene encodes a protein that plays a critical role in dynein arm assembly and motile cilia function. Mutations in this gene result in primary ciliary dyskinesia. Naturally occurring readthrough transcription occurs from this locus to the downstream t-complex 10 like (TCP10L) gene. [provided by RefSeq, Apr 2017] |
| Synonyms: | C21orf48; FLJ20467; FLJ37137; FLJ40247 |



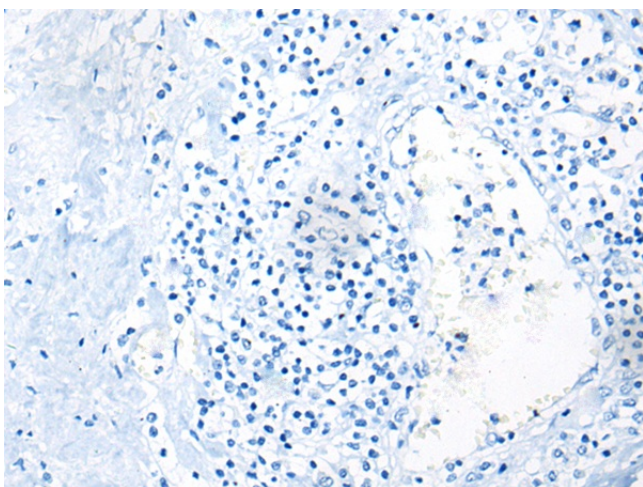
[View online »](#)

Product images:

Gel: 8%SDS-PAGE
Lysate: 40 μ g
Lane: Human testis tissue lysate
Primary antibody: [TA369880] (CFAP298 Antibody) at dilution 1/250
Secondary antibody: Goat anti rabbit IgG at 1/8000 dilution
Exposure time: 1 second



Immunohistochemistry of paraffin-embedded Human prostate cancer tissue using [TA369880] (CFAP298 Antibody) at dilution 1/30 (Original magnification: \times 200)



Immunohistochemistry of paraffin-embedded Human prostate cancer tissue using [TA369880] (CFAP298 Antibody) at dilution 1/30, treated with fusion protein. (Original magnification: $\times 200$)