

Product datasheet for **TA369880**

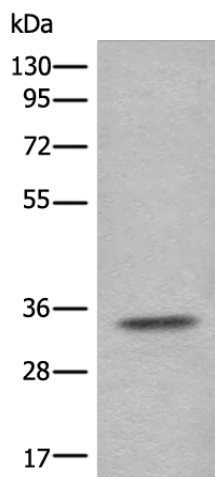
CFAP298 Rabbit Polyclonal Antibody

Product data:

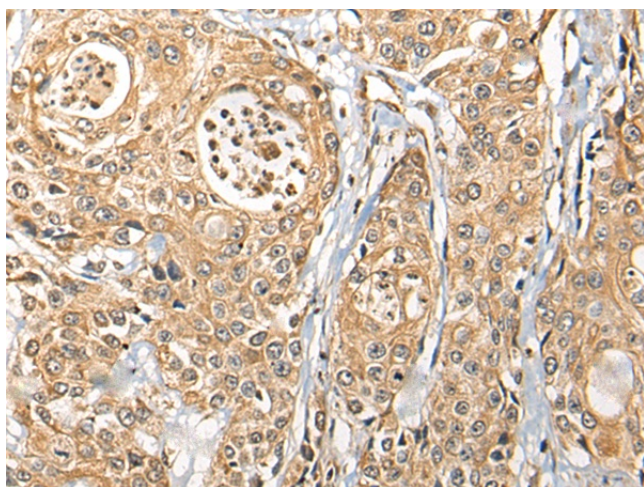
Product Type:	Primary Antibodies
Applications:	IHC, WB
Recommended Dilution:	WB: 200-1000 WB positive control: Human testis tissue lysate IHC: 25-100 Positive control: Human prostate cancer Predicted cell location: Cytoplasm
Reactivity:	Human, Mouse, Rat
Host:	Rabbit
Isotype:	IgG
Clonality:	Polyclonal
Immunogen:	Fusion protein of human CFAP298
Formulation:	pH7.4 PBS, 0.05% NaN ₃ , 40% Glycerol
Concentration:	lot specific
Purification:	Antigen affinity purification
Conjugation:	Unconjugated
Storage:	Store at -20°C.
Stability:	1 year
Predicted Protein Size:	33 kDa
Gene Name:	chromosome 21 open reading frame 59
Database Link:	Entrez Gene 56683 Human P57076
Background:	This gene encodes a protein that plays a critical role in dynein arm assembly and motile cilia function. Mutations in this gene result in primary ciliary dyskinesia. Naturally occurring readthrough transcription occurs from this locus to the downstream t-complex 10 like (TCP10L) gene. [provided by RefSeq, Apr 2017]
Synonyms:	C21orf48; FLJ20467; FLJ37137; FLJ40247



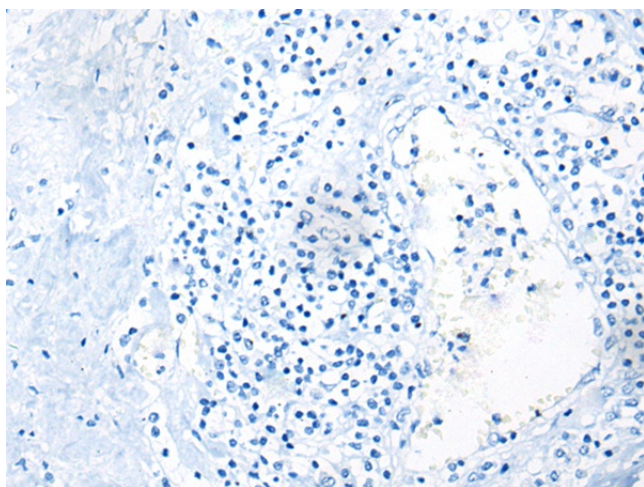
[View online »](#)

Product images:

Gel: 8%SDS-PAGE
Lysate: 40 µg
Lane: Human testis tissue lysate
Primary antibody: TA369880 (CFAP298 Antibody)
at dilution 1/250
Secondary antibody: Goat anti rabbit IgG at
1/8000 dilution
Exposure time: 1 second



Immunohistochemistry of paraffin-embedded
Human prostate cancer tissue using TA369880
(CFAP298 Antibody) at dilution 1/30 (Original
magnification: ×200)



Immunohistochemistry of paraffin-embedded Human prostate cancer tissue using TA369880 (CFAP298 Antibody) at dilution 1/30, treated with fusion protein. (Original magnification: ×200)