

## Product datasheet for **TA369879S**

### **GATD3 Rabbit Polyclonal Antibody**

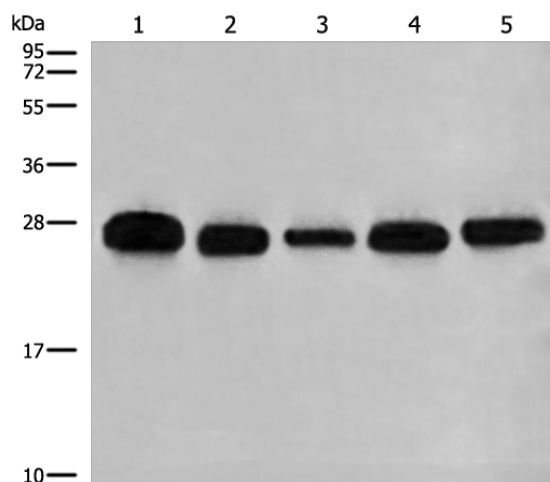
#### **Product data:**

Product Type:	Primary Antibodies
Applications:	IHC, WB
Recommended Dilution:	WB: 500-2000 WB positive control: 293T, A549, HeLa, K562 and HEPG2 cell lysates IHC: 30-150 Positive control: Human liver cancer Predicted cell location: Cytoplasm
Reactivity:	Human
Host:	Rabbit
Isotype:	IgG
Clonality:	Polyclonal
Immunogen:	Fusion protein of human GATD3B
Formulation:	pH7.4 PBS, 0.05% NaN <sub>3</sub> , 40% Glycerol
Purification:	Antigen affinity purification
Conjugation:	Unconjugated
Storage:	Store at -20°C.
Stability:	1 year
Predicted Protein Size:	28 kDa
Gene Name:	chromosome 21 open reading frame 33
Database Link:	<a href="#">Entrez Gene 8209 Human</a> <a href="#">A0A0B4I2D5</a>
Background:	May play a role in promoting mitochondrial enlargement in cone photoreceptor cells.
Synonyms:	D21S2048E; ES1; GT335; HES1; KNP-I; KNP-Ia; KNPH

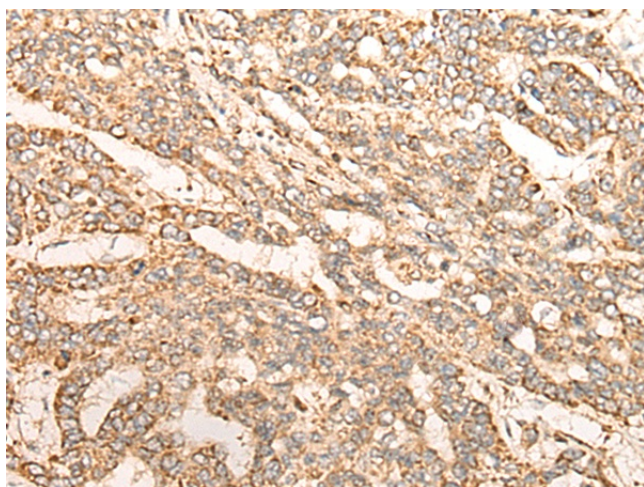


[View online »](#)

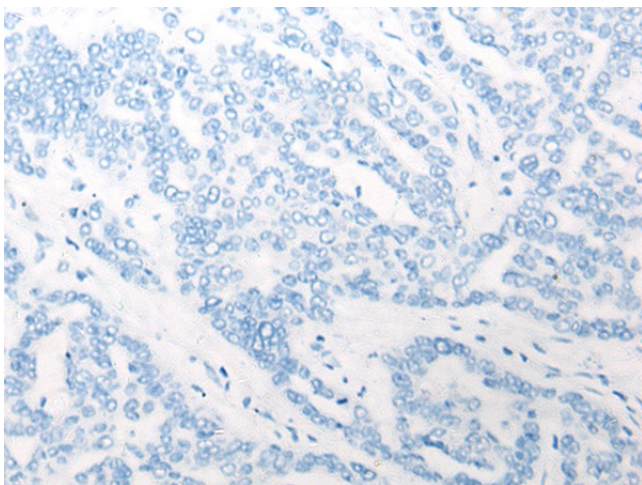
## Product images:



Gel: 12%SDS-PAGE  
Lysate: 40  $\mu$ g  
Lane 1-5: 293T  
A549  
Hela  
K562 and HEPG2 cell lysates  
Primary antibody: [TA369879] (GATD3B Antibody)  
at dilution 1/400  
Secondary antibody: Goat anti rabbit IgG at  
1/8000 dilution  
Exposure time: 1 second



Immunohistochemistry of paraffin-embedded  
Human liver cancer tissue using [TA369879]  
(GATD3B Antibody) at dilution 1/35 (Original  
magnification:  $\times 200$ )



Immunohistochemistry of paraffin-embedded Human liver cancer tissue using [TA369879] (GATD3B Antibody) at dilution 1/35, treated with fusion protein. (Original magnification: ×200)