

Product datasheet for **TA369876**

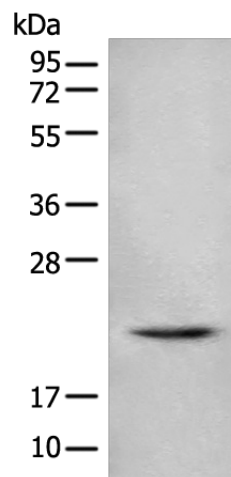
C1orf19 (TSEN15) Rabbit Polyclonal Antibody

Product data:

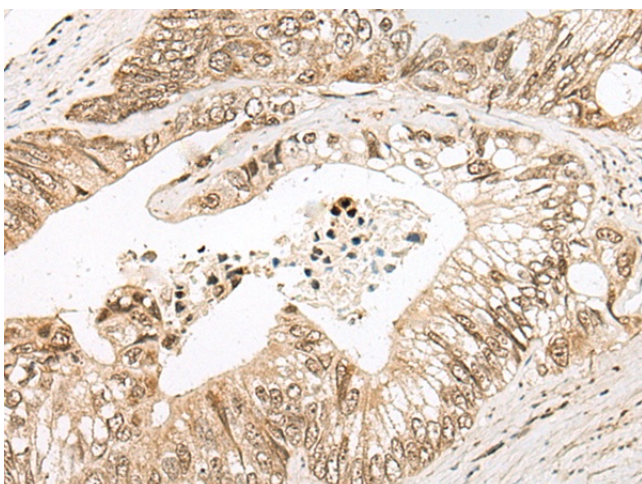
Product Type:	Primary Antibodies
Applications:	IHC, WB
Recommended Dilution:	WB: 200-1000 WB positive control: Mouse spleen tissue lysate IHC: 50-300 Positive control: Human colorectal cancer Predicted cell location: Nucleus and Cytoplasm
Reactivity:	Human, Mouse
Host:	Rabbit
Isotype:	IgG
Clonality:	Polyclonal
Immunogen:	Full length fusion protein
Formulation:	pH7.4 PBS, 0.05% NaN ₃ , 40% Glycerol
Concentration:	lot specific
Purification:	Antigen affinity purification
Conjugation:	Unconjugated
Storage:	Store at -20°C.
Stability:	1 year
Predicted Protein Size:	19 kDa
Gene Name:	tRNA splicing endonuclease subunit 15
Database Link:	Entrez Gene 116461 Human Q8WW01
Background:	This gene encodes a subunit of the tRNA splicing endonuclease, which catalyzes the removal of introns from tRNA precursors. Alternative splicing results in multiple transcript variants. There is a pseudogene of this gene on chromosome 17.
Synonyms:	C1orf19; HsSen15; sen15



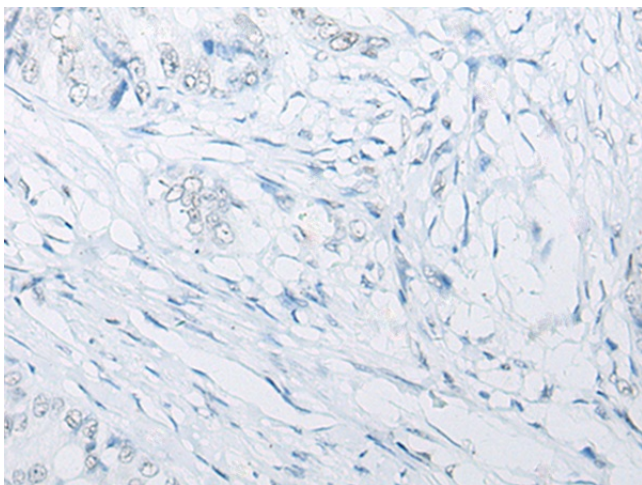
[View online »](#)

Product images:

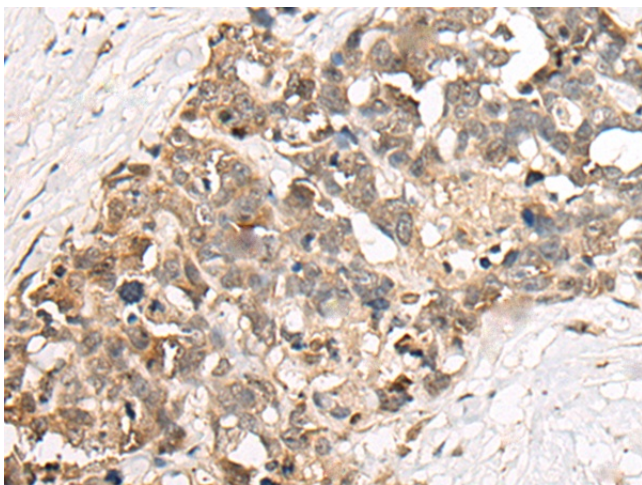
Gel: 12%SDS-PAGE
Lysate: 40 μ g
Lane: Mouse spleen tissue lysate
Primary antibody: TA369876 (TSEN15 Antibody)
at dilution 1/800
Secondary antibody: Goat anti rabbit IgG at
1/8000 dilution
Exposure time: 30 seconds



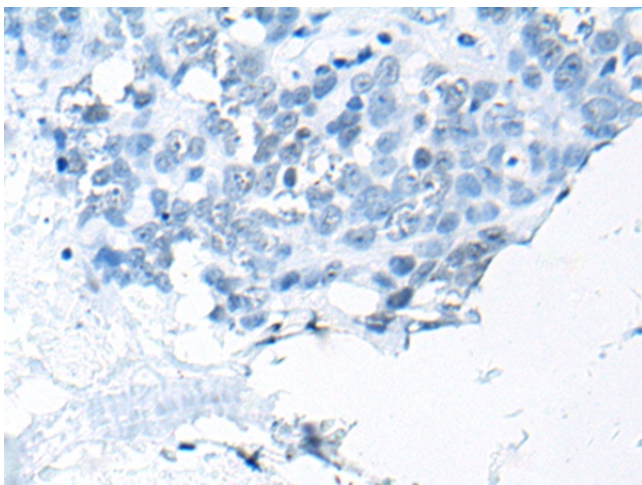
Immunohistochemistry of paraffin-embedded
Human colorectal cancer tissue using TA369876
(TSEN15 Antibody) at dilution 1/85 (Original
magnification: \times 200)



Immunohistochemistry of paraffin-embedded Human colorectal cancer tissue using TA369876 (TSEN15 Antibody) at dilution 1/85, treated with fusion protein. (Original magnification: ×200)



Immunohistochemistry of paraffin-embedded Human thyroid cancer tissue using TA369876 (TSEN15 Antibody) at dilution 1/85 (Original magnification: ×200)



Immunohistochemistry of paraffin-embedded Human thyroid cancer tissue using TA369876 (TSEN15 Antibody) at dilution 1/85, treated with fusion protein. (Original magnification: ×200)