

Product datasheet for **TA369867**

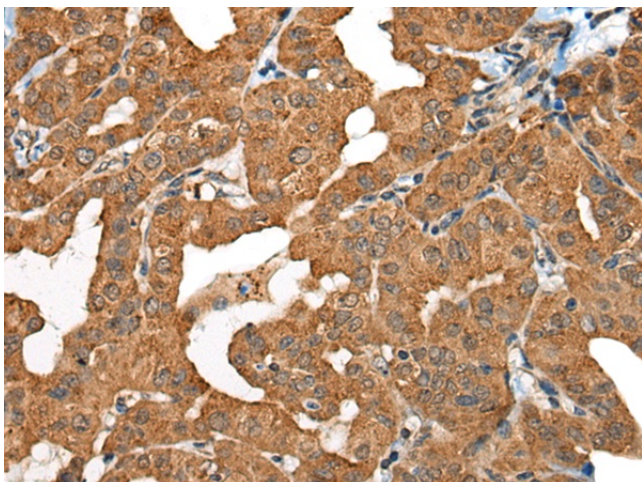
RMC1 Rabbit Polyclonal Antibody

Product data:

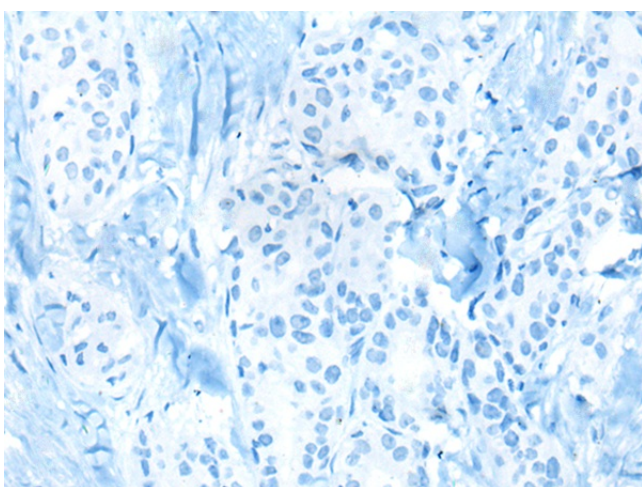
| | |
|-----------------------|---|
| Product Type: | Primary Antibodies |
| Applications: | IHC |
| Recommended Dilution: | IHC: 30-150 Positive control: Human thyroid cancer Predicted cell location: Cytoplasm |
| Reactivity: | Human, Mouse |
| Host: | Rabbit |
| Isotype: | IgG |
| Clonality: | Polyclonal |
| Immunogen: | Fusion protein of human RMC1 |
| Formulation: | pH7.4 PBS, 0.05% NaN ₃ , 40% Glycerol |
| Concentration: | lot specific |
| Purification: | Antigen affinity purification |
| Conjugation: | Unconjugated |
| Storage: | Store at -20°C. |
| Stability: | 1 year |
| Gene Name: | chromosome 18 open reading frame 8 |
| Database Link: | Entrez Gene 29919 Human Q96DM3 |
| Background: | This gene encodes a colon cancer associated protein. [provided by RefSeq, Jan 2013] |
| Synonyms: | FLJ23453; HsT2591; Mic-1; MIC1 |



[View online »](#)

Product images:

Immunohistochemistry of paraffin-embedded Human thyroid cancer tissue using TA369867 (RMC1 Antibody) at dilution 1/25 (Original magnification: $\times 200$)



Immunohistochemistry of paraffin-embedded Human thyroid cancer tissue using TA369867 (RMC1 Antibody) at dilution 1/25, treated with fusion protein. (Original magnification: $\times 200$)