

Product datasheet for **TA369860S**

C15orf40 Rabbit Polyclonal Antibody

Product data:

Product Type:	Primary Antibodies
Applications:	IHC, WB
Recommended Dilution:	WB: 500-2000 WB positive control: Human heart tissue lysate IHC: 25-100 Positive control: Human brain Predicted cell location: Cytoplasm and Cell membrane
Reactivity:	Human
Host:	Rabbit
Isotype:	IgG
Clonality:	Polyclonal
Immunogen:	Fusion protein of human C15orf40
Formulation:	pH7.4 PBS, 0.05% NaN ₃ , 40% Glycerol
Purification:	Antigen affinity purification
Conjugation:	Unconjugated
Storage:	Store at -20°C.
Stability:	1 year
Predicted Protein Size:	16 kDa
Gene Name:	chromosome 15 open reading frame 40
Database Link:	Entrez Gene 123207 Human Q8WUR7



[View online »](#)

Background:

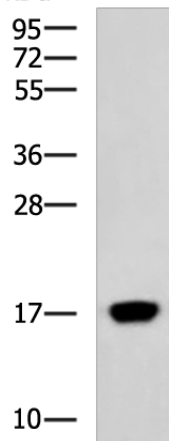
Encoding more than 700 genes, chromosome 15 is made up of approximately 106 million base pairs and is about 3% of the human genome. Angelman and Prader-Willi syndromes are associated with loss of function or deletion of genes in the 15q11-q13 region. In the case of Angelman syndrome, this loss is due to inactivity of the maternal 15q11-q13 encoded UBE3A gene in the brain by either chromosomal deletion or mutation. In cases of Prader-Willi syndrome, there is a partial or complete deletion of this region from the paternal copy of chromosome 15. Tay-Sachs disease is a lethal disorder associated with mutations of the HEXA gene, which is encoded by chromosome 15. Marfan syndrome is associated with chromosome 15 through the FBN1 gene. The C15orf40 gene product has been provisionally designated C15orf40 pending further characterization.

Synonyms:

FLJ33606; MGC29937

Product images:

kDa



Gel: 12%SDS-PAGE

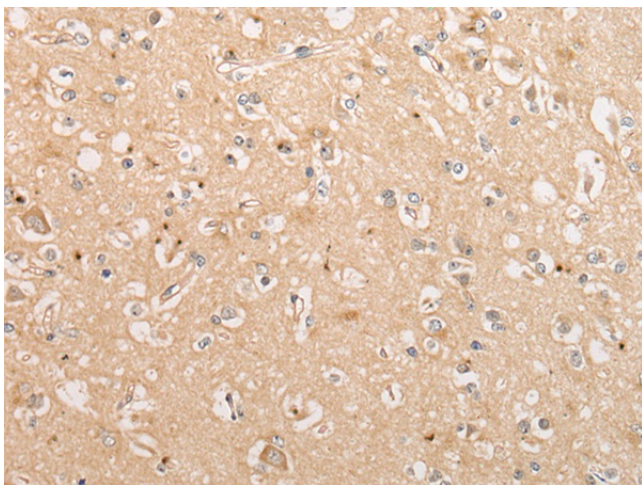
Lysate: 40 µg

Lane: Human heart tissue lysate

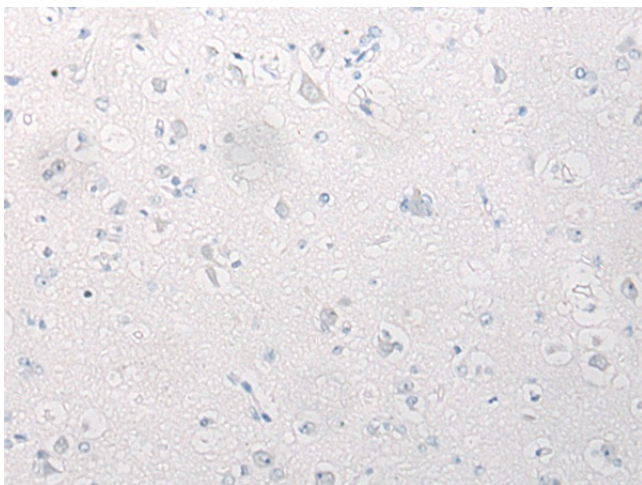
Primary antibody: [TA369860] (C15orf40 Antibody) at dilution 1/400

Secondary antibody: Goat anti rabbit IgG at 1/5000 dilution

Exposure time: 10 seconds



Immunohistochemistry of paraffin-embedded Human brain tissue using [TA369860] (C15orf40 Antibody) at dilution 1/30 (Original magnification: ×200)



Immunohistochemistry of paraffin-embedded Human brain tissue using [TA369860] (C15orf40 Antibody) at dilution 1/30, treated with fusion protein. (Original magnification: $\times 200$)