

Product datasheet for **TA369854**

MYG1 Rabbit Polyclonal Antibody

Product data:

Product Type:	Primary Antibodies
Applications:	IHC, WB
Recommended Dilution:	WB: 200-1000 WB positive control: PC-3, MCF-7 and 293T cell lysates IHC: 25-100 Positive control: Human esophagus cancer Predicted cell location: Nucleus and Cytoplasm
Reactivity:	Human
Host:	Rabbit
Isotype:	IgG
Clonality:	Polyclonal
Immunogen:	Fusion protein of human C12orf10
Formulation:	pH7.4 PBS, 0.05% NaN ₃ , 40% Glycerol
Concentration:	lot specific
Purification:	Antigen affinity purification
Conjugation:	Unconjugated
Storage:	Store at -20°C.
Stability:	1 year
Predicted Protein Size:	42 kDa
Gene Name:	chromosome 12 open reading frame 10
Database Link:	Entrez Gene 60314 Human Q9HB07



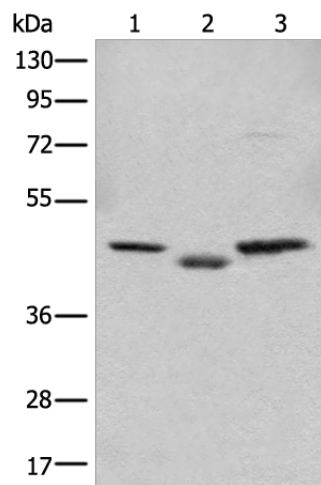
[View online »](#)

Background:

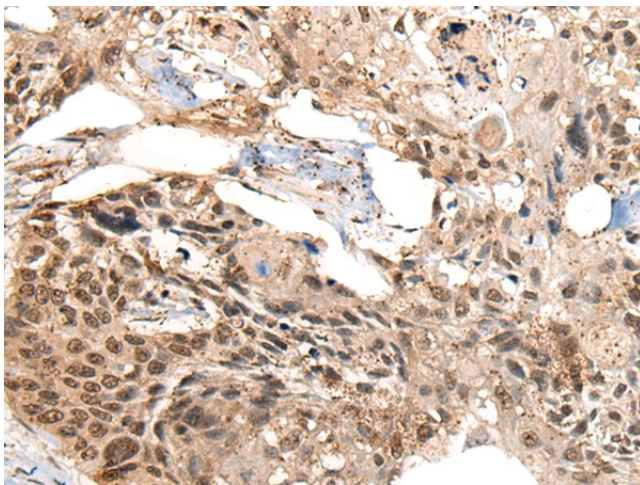
C12orf10, also known as MYG1, MYG1 is a 376 amino acid nucleo-mitochondrial protein belonging to the UPF0160 (MYG1) family. MYG1 is encoded by a gene that maps to human chromosome 12q13.13 and is ubiquitously expressed in simple as well as complex eukaryotes, with highest levels in testis. Considered to have a metal-dependent protein hydrolase (UPF0160) domain, MYG1 exhibits a mitochondrial targeting signal in the N-terminal region and a Pat7-type nuclear localization signal in the region between amino acids 33-39. Although MYG1 displays differential patterns and levels of expression during embryonic development, expression in normal adult tissues is stable, suggesting MYG1 involvement in early developmental processes and in adult stress/illness conditions. Elevation of MYG1 expression may be also associated with vitiligo susceptibility.

Synonyms:

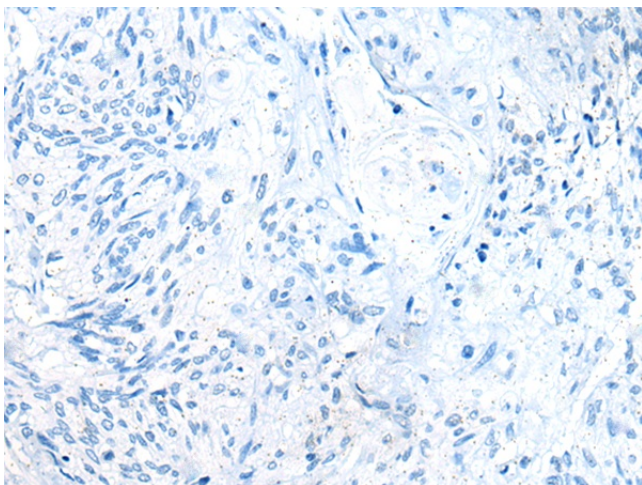
MST024; MSTP024; MYG; MYG1

Product images:

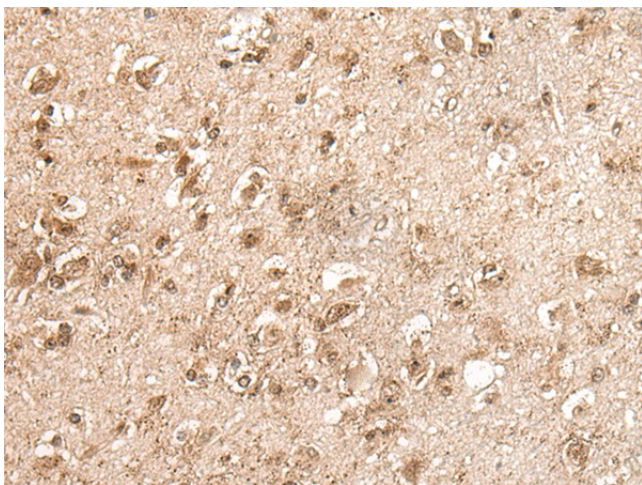
Gel: 8%SDS-PAGE
Lysate: 40 µg
Lane 1-3: PC-3
MCF-7 and 293T cell lysates
Primary antibody: TA369854 (C12orf10 Antibody)
at dilution 1/350
Secondary antibody: Goat anti rabbit IgG at
1/8000 dilution
Exposure time: 5 seconds



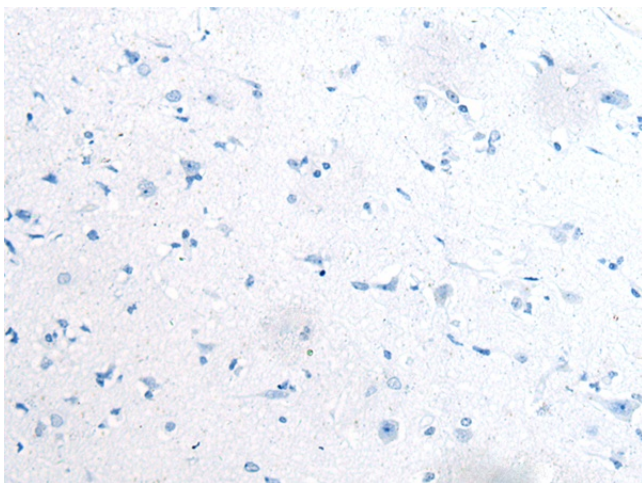
Immunohistochemistry of paraffin-embedded
Human esophagus cancer tissue using TA369854
(C12orf10 Antibody) at dilution 1/35 (Original
magnification: x200)



Immunohistochemistry of paraffin-embedded Human esophagus cancer tissue using TA369854 (C12orf10 Antibody) at dilution 1/35, treated with fusion protein. (Original magnification: $\times 200$)



Immunohistochemistry of paraffin-embedded Human brain tissue using TA369854 (C12orf10 Antibody) at dilution 1/35 (Original magnification: $\times 200$)



Immunohistochemistry of paraffin-embedded Human brain tissue using TA369854 (C12orf10 Antibody) at dilution 1/35, treated with fusion protein. (Original magnification: $\times 200$)