

Product datasheet for **TA369852S**

BUD31 Rabbit Polyclonal Antibody

Product data:

Product Type:	Primary Antibodies
Applications:	IHC, WB
Recommended Dilution:	WB: 1000-5000 WB positive control: Human testis tissue□Mouse brain tissue□Mouse heart tissue□PC-3 cell,231 cell□Raji and Jurkat cell lysates IHC: 50-300 Positive control: Human liver cancer Predicted cell location: Cytoplasm or Nucleus
Reactivity:	Human, Mouse, Rat
Host:	Rabbit
Isotype:	IgG
Clonality:	Polyclonal
Immunogen:	Full length fusion protein
Formulation:	pH7.4 PBS, 0.05% NaN ₃ , 40% Glycerol
Purification:	Antigen affinity purification
Conjugation:	Unconjugated
Storage:	Store at -20°C.
Stability:	1 year
Predicted Protein Size:	17 kDa
Gene Name:	BUD31 homolog
Database Link:	Entrez Gene 8896 Human P41223



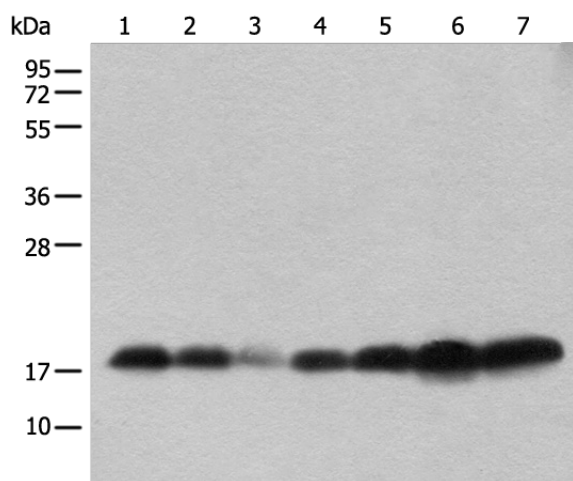
[View online »](#)

Background:

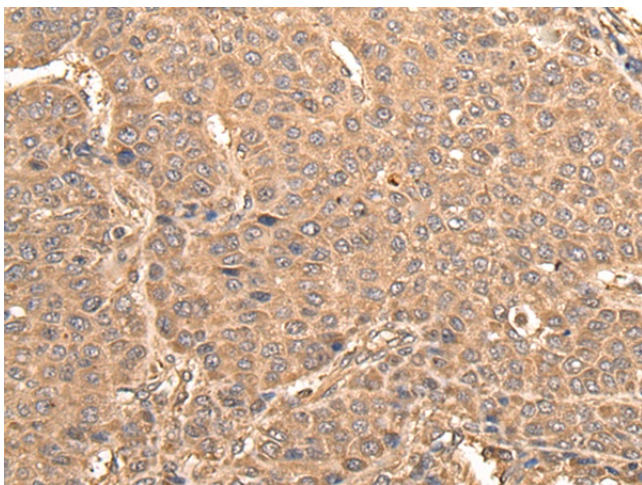
BUD31 (Protein G10 homolog, EDG-2) is a 144 amino acid protein encoded by the human gene BUD31. BUD31 is a nuclear protein that belongs to the BUD31 (G10) family. BUD31 is found on chromosome 7 which is about 158 million bases long, encodes over 1,000 genes and makes up about 5% of the human genome. Chromosome 7 has been linked to osteogenesis imperfecta, Pendred syndrome, lissencephaly, citrullinemia and Shwachman-Diamond syndrome. The deletion of a portion of the long (q) arm of human chromosome 7 is associated with Williams-Beuren syndrome, a condition characterized by mild mental retardation, an unusual comform and friendliness with strangers and an elfin appearance. Deletions of portions of the q arm of chromosome 7 are also seen in a number of myeloid disorders including cases of acute myelogenous leukemia and myelodysplasia.

Synonyms:

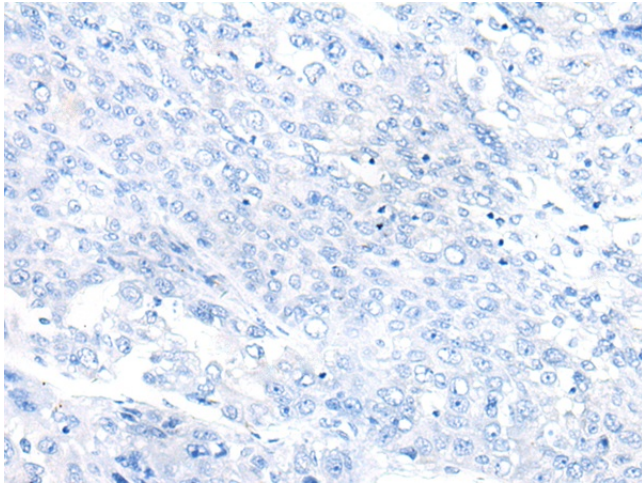
EDG-2; EDG2; fSAP17; G10; MGC111202; YCR063W

Product images:

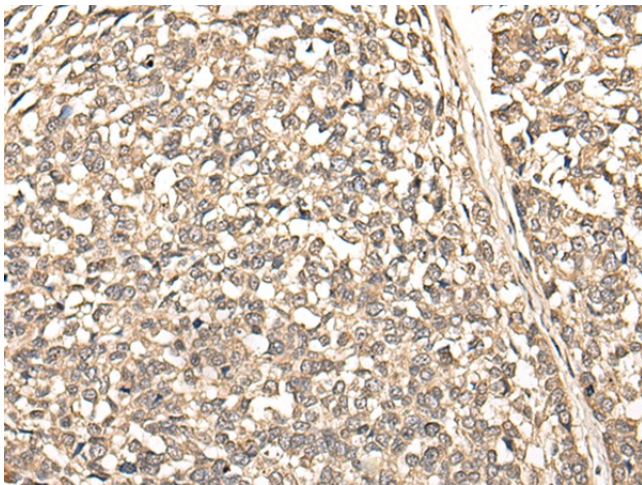
Gel: 12%SDS-PAGE
Lysate: 40 μ g
Lane 1-7: Human testis tissue
Mouse brain tissue
Mouse heart tissue
PC-3 cell
231 cell
Raji and Jurkat cell lysates
Primary antibody: [TA369852] (BUD31 Antibody) at dilution 1/800
Secondary antibody: Goat anti rabbit IgG at 1/8000 dilution
Exposure time: 10 seconds



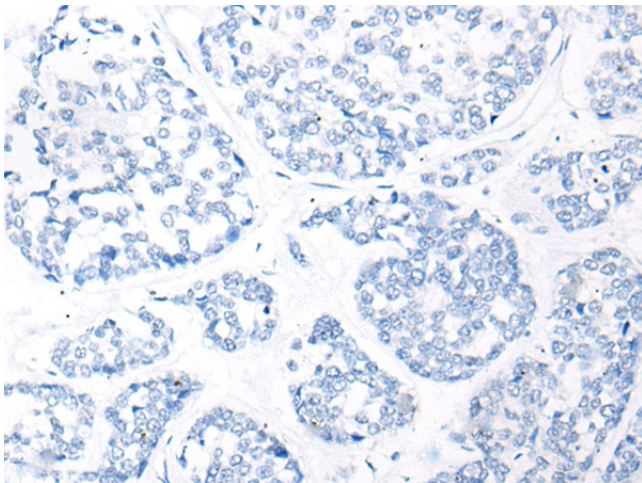
Immunohistochemistry of paraffin-embedded Human liver cancer tissue using [TA369852] (BUD31 Antibody) at dilution 1/75 (Original magnification: \times 200)



Immunohistochemistry of paraffin-embedded Human liver cancer tissue using [TA369852] (BUD31 Antibody) at dilution 1/75, treated with fusion protein. (Original magnification: ×200)



Immunohistochemistry of paraffin-embedded Human esophagus cancer tissue using [TA369852] (BUD31 Antibody) at dilution 1/75 (Original magnification: ×200)



Immunohistochemistry of paraffin-embedded Human esophagus cancer tissue using [TA369852] (BUD31 Antibody) at dilution 1/75, treated with fusion protein. (Original magnification: ×200)