

## Product datasheet for **TA369846**

### **BRRN1 (NCAPH) Rabbit Polyclonal Antibody**

#### **Product data:**

Product Type:	Primary Antibodies
Applications:	IHC, WB
Recommended Dilution:	WB: 500-2000 WB positive control: K562 and Jurkat cell lysates IHC: 30-150 Positive control: Human thyroid cancer Predicted cell location: Cytoplasm or Nucleus
Reactivity:	Human, Mouse
Host:	Rabbit
Isotype:	IgG
Clonality:	Polyclonal
Immunogen:	Fusion protein of human NCAPH
Formulation:	pH7.4 PBS, 0.05% NaN <sub>3</sub> , 40% Glycerol
Concentration:	lot specific
Purification:	Antigen affinity purification
Conjugation:	Unconjugated
Storage:	Store at -20°C.
Stability:	1 year
Predicted Protein Size:	83 kDa
Gene Name:	non-SMC condensin I complex subunit H
Database Link:	<a href="#">Entrez Gene 23397 Human Q15003</a>

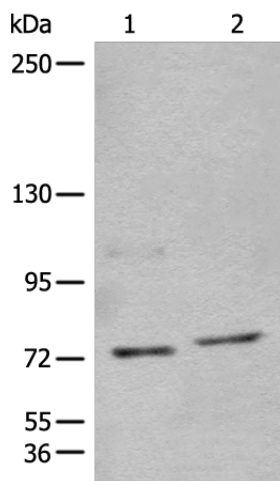
**Background:** This gene encodes a member of the barr gene family and a regulatory subunit of the condensin complex. This complex is required for the conversion of interphase chromatin into condensed chromosomes. The protein encoded by this gene is associated with mitotic chromosomes, except during the early phase of chromosome condensation. During interphase, the protein has a distinct punctate nucleolar localization. Alternatively spliced transcript variants encoding different proteins have been described.



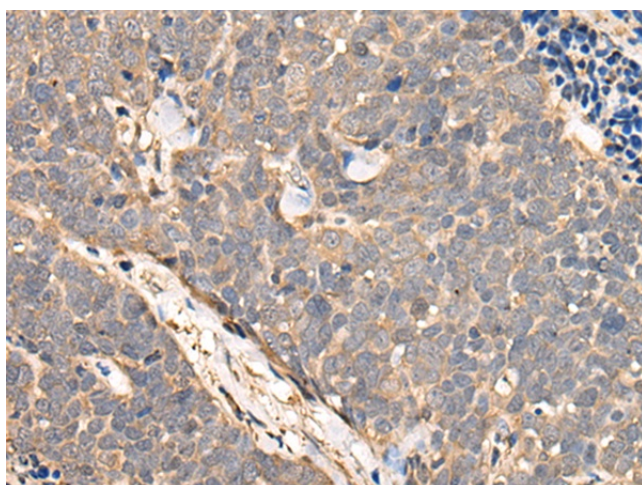
[View online »](#)

Synonyms: BRRN; BRRN1; CAP-H; CAPH; hCAP-H; KIAA0074

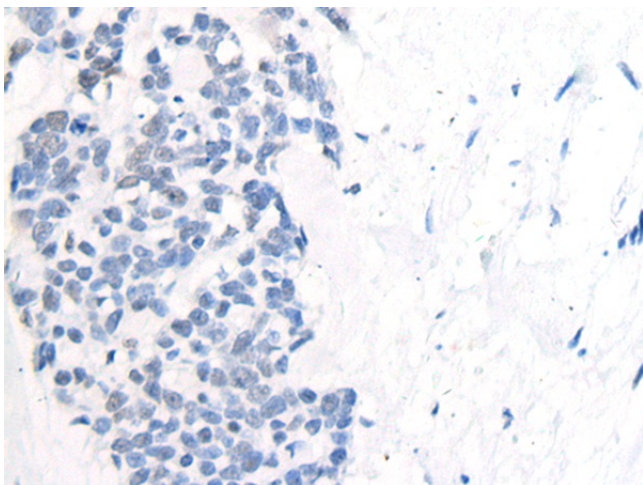
**Product images:**



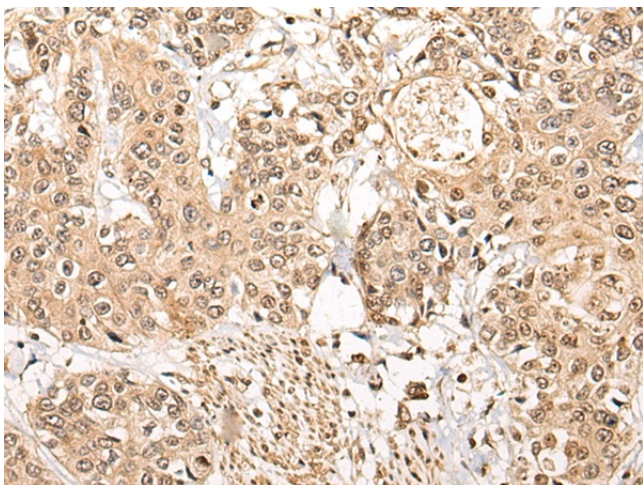
Gel: 6%SDS-PAGE  
 Lysate: 40 µg  
 Lane 1-2:K562 and Jurkat cell lysates  
 Primary antibody: TA369846 (NCAPH Antibody) at dilution 1/450  
 Secondary antibody: Goat anti rabbit IgG at 1/8000 dilution  
 Exposure time: 30 seconds



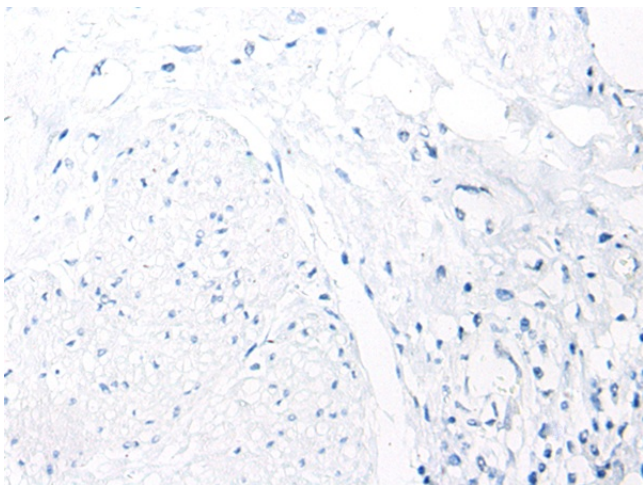
Immunohistochemistry of paraffin-embedded Human thyroid cancer tissue using TA369846 (NCAPH Antibody) at dilution 1/45 (Original magnification: ×200)



Immunohistochemistry of paraffin-embedded Human thyroid cancer tissue using TA369846 (NCAPH Antibody) at dilution 1/45, treated with fusion protein. (Original magnification:  $\times 200$ )



Immunohistochemistry of paraffin-embedded Human prostate cancer tissue using TA369846 (NCAPH Antibody) at dilution 1/45 (Original magnification:  $\times 200$ )



Immunohistochemistry of paraffin-embedded Human prostate cancer tissue using TA369846 (NCAPH Antibody) at dilution 1/45, treated with fusion protein. (Original magnification:  $\times 200$ )