

## Product datasheet for **TA369836**

### **BOLA1 Rabbit Polyclonal Antibody**

#### **Product data:**

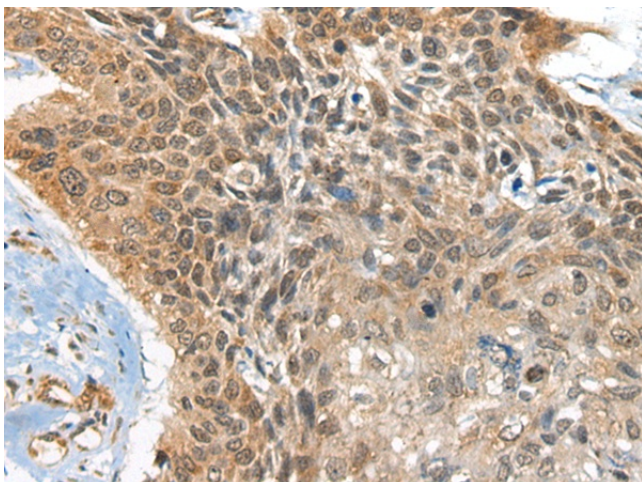
Product Type:	Primary Antibodies
Applications:	IHC
Recommended Dilution:	IHC: 40-200 Positive control: Human esophagus cancer Predicted cell location: Nucleus or Cytoplasm
Reactivity:	Human, Mouse
Host:	Rabbit
Isotype:	IgG
Clonality:	Polyclonal
Immunogen:	Full length fusion protein
Formulation:	pH7.4 PBS, 0.05% NaN <sub>3</sub> , 40% Glycerol
Concentration:	lot specific
Purification:	Antigen affinity purification
Conjugation:	Unconjugated
Storage:	Store at -20°C.
Stability:	1 year
Gene Name:	bolA family member 1
Database Link:	<a href="#">Entrez Gene 51027 Human Q9Y3E2</a>

**Background:** BOLA1 (BoIA-like protein 1), also known as CGI-143, is a member of the BoIA/yrbA family of proteins. Members of this family are homologs of the Escherichia coli protein, BoIA. BoIA-like proteins are evolutionarily conserved from prokaryotes to eukaryotes and are believed to play a role in cell-cycle regulation or cell proliferation possibly via some sort of transcription regulation of other genes. In addition, BoIA-like proteins may contain nucleic-acid binding properties, as is suggested by a fold structure that is similar to the KH-fold, a motif known to participate in nucleic-acid binding. Characteristic of BoIA-like proteins which typically consist of approximately 100 amino acids, BOLA1 is a 137 amino acid protein.

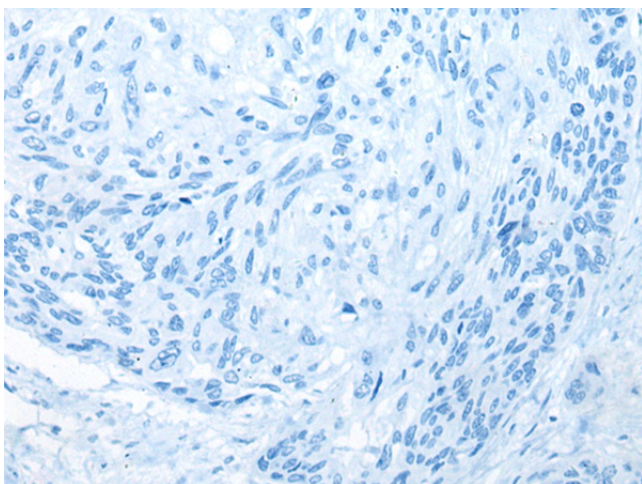
**Synonyms:** CGI-143; MGC75015; OTTHUMP00000013911; OTTHUMP00000013912; RP11-196G18.18



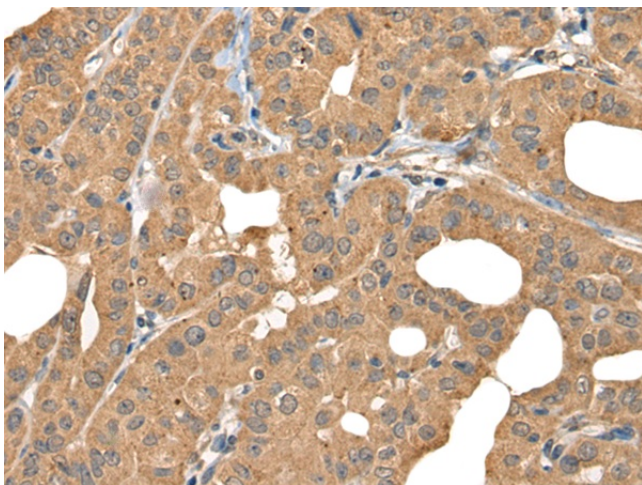
[View online »](#)

**Product images:**

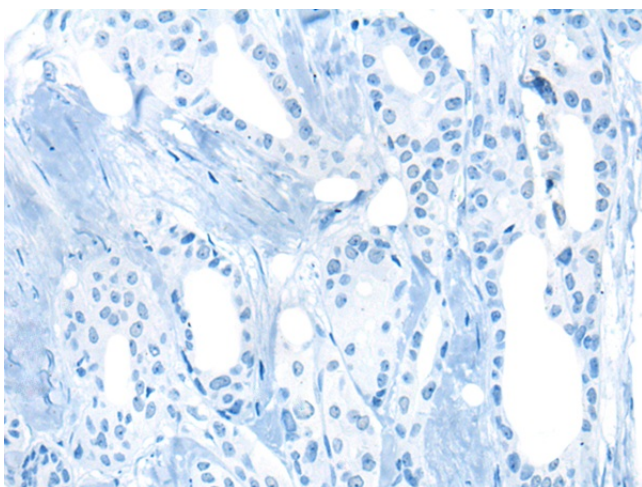
Immunohistochemistry of paraffin-embedded Human esophagus cancer tissue using TA369836 (BOLA1 Antibody) at dilution 1/35 (Original magnification:  $\times 200$ )



Immunohistochemistry of paraffin-embedded Human esophagus cancer tissue using TA369836 (BOLA1 Antibody) at dilution 1/35, treated with fusion protein. (Original magnification:  $\times 200$ )



Immunohistochemistry of paraffin-embedded Human thyroid cancer tissue using TA369836 (BOLA1 Antibody) at dilution 1/35 (Original magnification:  $\times 200$ )



Immunohistochemistry of paraffin-embedded Human thyroid cancer tissue using TA369836 (BOLA1 Antibody) at dilution 1/35, treated with fusion protein. (Original magnification:  $\times 200$ )