

Product datasheet for **TA369831S**

PHF21A Rabbit Polyclonal Antibody

Product data:

Product Type:	Primary Antibodies
Applications:	IHC, WB
Recommended Dilution:	WB: 500-2000 WB positive control: A172□293T□Hela and A375 cell lysates IHC: 40-200 Positive control: Human prostate cancer Predicted cell location: Cytoplasm and Nucleus
Reactivity:	Human, Mouse
Host:	Rabbit
Isotype:	IgG
Clonality:	Polyclonal
Immunogen:	Fusion protein of human PHF21A
Formulation:	pH7.4 PBS, 0.05% NaN ₃ , 40% Glycerol
Purification:	Antigen affinity purification
Conjugation:	Unconjugated
Storage:	Store at -20°C.
Stability:	1 year
Predicted Protein Size:	75 kDa
Gene Name:	PHD finger protein 21A
Database Link:	Entrez Gene 51317 Human Q96BD5



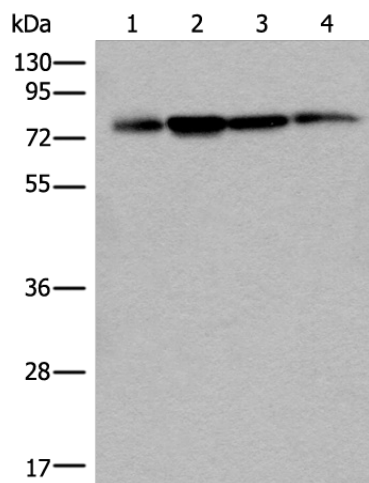
[View online »](#)

Background:

Zinc-finger proteins contain DNA-binding domains and have a wide variety of functions, most of which encompass some form of transcriptional activation or repression. PHF21A (PHD finger protein 21A), also known as BRAF35-HDAC complex protein BHC80, is a 680 amino acid nuclear protein that contains one PHD-type zinc finger and one A.T hook DNA-binding domain, suggesting involvement in transcriptional regulation events. PHF21A is a component of the BHC complex, which is responsible for repressing transcription of neuron-specific genes in non-neuronal cells. The BHC complex acts as a chromatin modifier that deacetylates and demethylates specific sites on histones. PHF21A may act as a scaffold within the BHC complex. Predominantly expressed in brain, three isoforms of PHF21A exist as a result of alternative splicing events.

Synonyms:

BHC80; BHC80a; BM-006; KIAA1696

Product images:

Gel: 8%SDS-PAGE

Lysate: 40 µg

Lane 1-4:A172

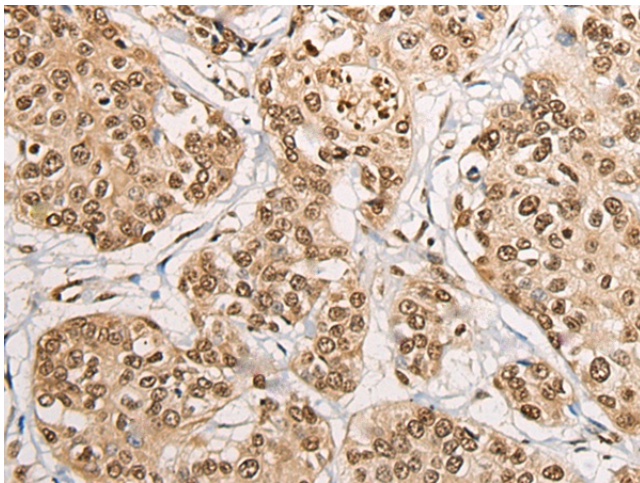
293T

Hela and A375 cell lysates

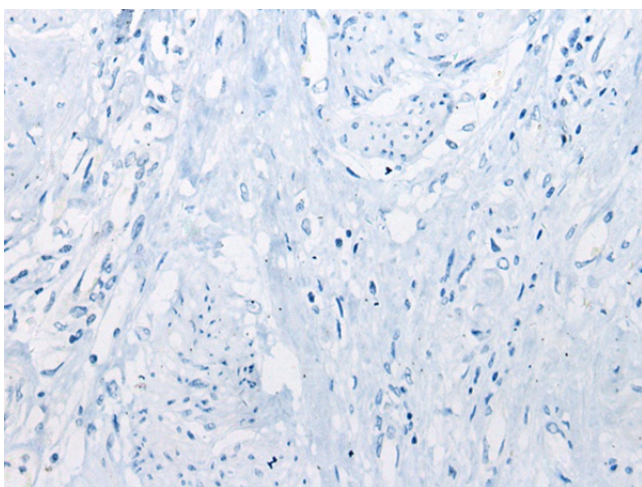
Primary antibody: [TA369831] (PHF21A Antibody)
at dilution 1/400

Secondary antibody: Goat anti rabbit IgG at
1/8000 dilution

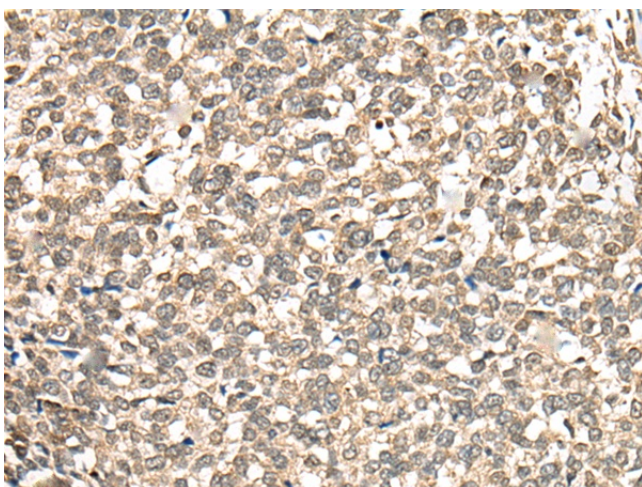
Exposure time: 3 seconds



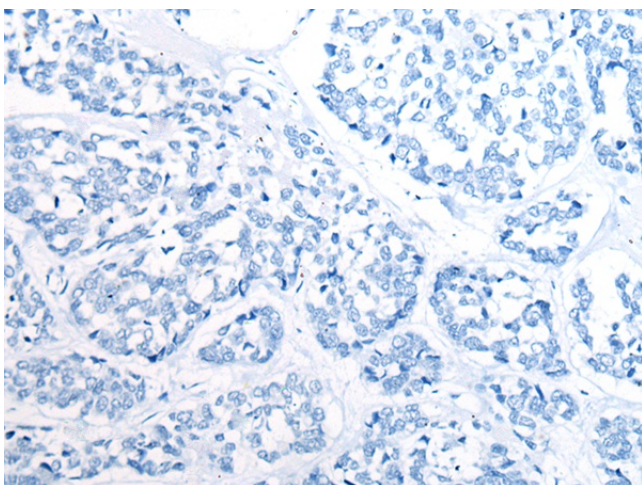
Immunohistochemistry of paraffin-embedded
Human prostate cancer tissue using [TA369831]
(PHF21A Antibody) at dilution 1/50 (Original
magnification: ×200)



Immunohistochemistry of paraffin-embedded Human prostate cancer tissue using [TA369831] (PHF21A Antibody) at dilution 1/50, treated with fusion protein. (Original magnification: $\times 200$)



Immunohistochemistry of paraffin-embedded Human esophagus cancer tissue using [TA369831] (PHF21A Antibody) at dilution 1/50 (Original magnification: $\times 200$)



Immunohistochemistry of paraffin-embedded Human esophagus cancer tissue using [TA369831] (PHF21A Antibody) at dilution 1/50, treated with fusion protein. (Original magnification: $\times 200$)