

## Product datasheet for **TA369828S**

### BDH2 Rabbit Polyclonal Antibody

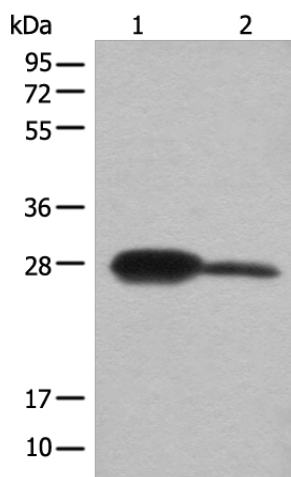
#### Product data:

Product Type:	Primary Antibodies
Applications:	IHC, WB
Recommended Dilution:	WB: 500-2000 WB positive control: Mouse kidney tissue and A172 cell lysates IHC: 50-300 Positive control: Human liver cancer Predicted cell location: Cytoplasm
Reactivity:	Human, Mouse, Rat
Host:	Rabbit
Isotype:	IgG
Clonality:	Polyclonal
Immunogen:	Full length fusion protein
Formulation:	pH7.4 PBS, 0.05% NaN <sub>3</sub> , 40% Glycerol
Purification:	Antigen affinity purification
Conjugation:	Unconjugated
Storage:	Store at -20°C.
Stability:	1 year
Predicted Protein Size:	27 kDa
Gene Name:	3-hydroxybutyrate dehydrogenase, type 2
Database Link:	<a href="#">Entrez Gene 56898 Human Q9BUT1</a>
Background:	Dehydrogenase that mediates the formation of 2,5-dihydroxybenzoic acid (2,5-DHBA), a siderophore that shares structural similarities with bacterial enterobactin and associates with LCN2, thereby playing a key role in iron homeostasis and transport. Also acts as a 3-hydroxybutyrate dehydrogenase (By similarity).
Synonyms:	DHRS6; EFA6R; FLJ13261; PRO20933; SDR15C1; UCPA-OR; UNQ6308



[View online »](#)

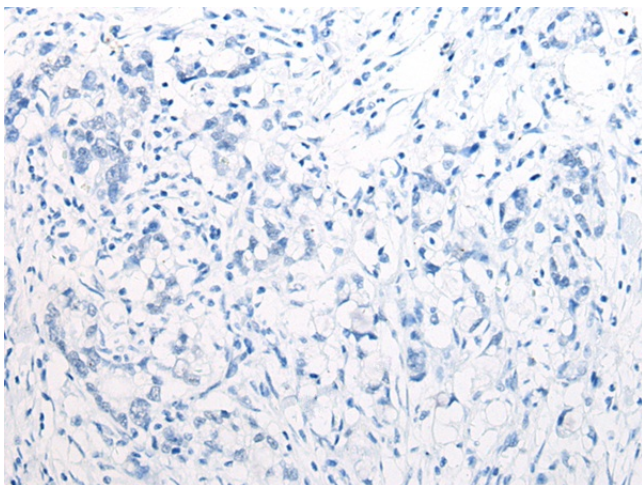
## Product images:



Gel: 12%SDS-PAGE  
Lysate: 40  $\mu$ g  
Lane 1-2: Mouse kidney tissue and A172 cell lysates  
Primary antibody: [TA369828] (BDH2 Antibody) at dilution 1/600  
Secondary antibody: Goat anti rabbit IgG at 1/8000 dilution  
Exposure time: 15 seconds



Immunohistochemistry of paraffin-embedded Human liver cancer tissue using [TA369828] (BDH2 Antibody) at dilution 1/65 (Original magnification:  $\times 200$ )



Immunohistochemistry of paraffin-embedded Human liver cancer tissue using [TA369828] (BDH2 Antibody) at dilution 1/65, treated with fusion protein. (Original magnification: ×200)