

## Product datasheet for **TA369819**

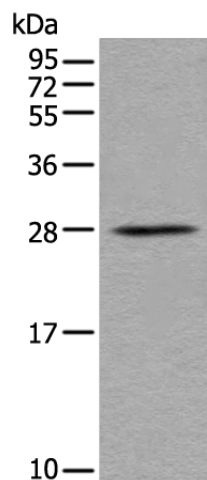
### **BARX1 Rabbit Polyclonal Antibody**

#### **Product data:**

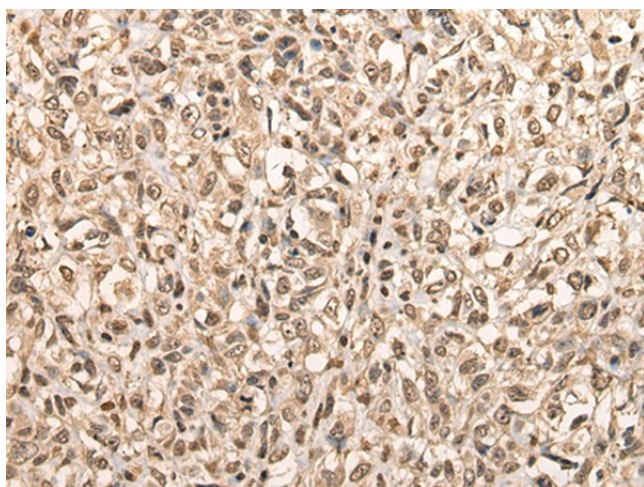
<b>Product Type:</b>	Primary Antibodies
<b>Applications:</b>	IHC, WB
<b>Recommended Dilution:</b>	WB: 200-1000 WB positive control: Mouse stomach tissue lysate IHC: 25-100 Positive control: Human lung cancer Predicted cell location: Nucleus
<b>Reactivity:</b>	Human, Mouse
<b>Host:</b>	Rabbit
<b>Isotype:</b>	IgG
<b>Clonality:</b>	Polyclonal
<b>Immunogen:</b>	Fusion protein of human BARX1
<b>Formulation:</b>	pH7.4 PBS, 0.05% NaN <sub>3</sub> , 40% Glycerol
<b>Concentration:</b>	lot specific
<b>Purification:</b>	Antigen affinity purification
<b>Conjugation:</b>	Unconjugated
<b>Storage:</b>	Store at -20°C.
<b>Stability:</b>	1 year
<b>Predicted Protein Size:</b>	27 kDa
<b>Gene Name:</b>	BARX homeobox 1
<b>Database Link:</b>	<a href="#">Entrez Gene 56033 Human Q9HBU1</a>
<b>Background:</b>	This gene encodes a member of the Bar subclass of homeobox transcription factors. Studies of the mouse and chick homolog suggest the encoded protein may play a role in developing teeth and craniofacial mesenchyme of neural crest origin. The protein may also be associated with differentiation of stomach epithelia.
<b>Synonyms:</b>	BARX1



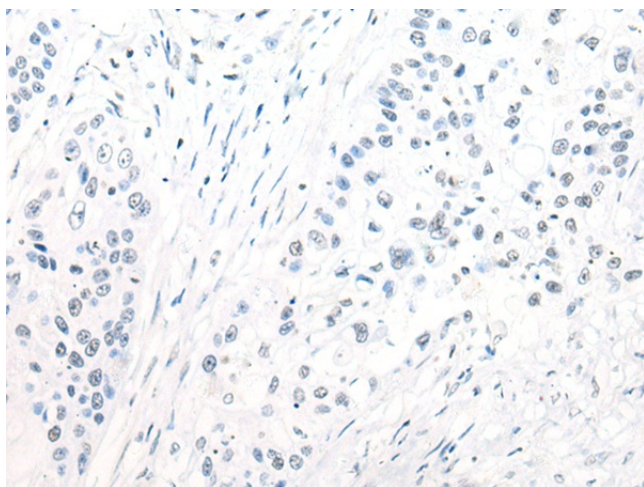
[View online »](#)

**Product images:**

Gel: 12%SDS-PAGE  
Lysate: 40 µg  
Lane: Mouse stomach tissue lysate  
Primary antibody: TA369819 (BARX1 Antibody) at dilution 1/300  
Secondary antibody: Goat anti rabbit IgG at 1/8000 dilution  
Exposure time: 1 minute



Immunohistochemistry of paraffin-embedded Human lung cancer tissue using TA369819 (BARX1 Antibody) at dilution 1/30 (Original magnification: ×200)



Immunohistochemistry of paraffin-embedded Human lung cancer tissue using TA369819 (BARX1 Antibody) at dilution 1/30, treated with fusion protein. (Original magnification:  $\times 200$ )