

Product datasheet for **TA369806**

ASS1 Rabbit Polyclonal Antibody

Product data:

Product Type:	Primary Antibodies
Applications:	IHC, WB
Recommended Dilution:	WB: 500-2000 WB positive control: A431 cell lysate IHC: 25-100 Positive control: Human liver cancer Predicted cell location: Cytoplasm
Reactivity:	Human, Mouse, Rat
Host:	Rabbit
Isotype:	IgG
Clonality:	Polyclonal
Immunogen:	Fusion protein of human ASS1
Formulation:	pH7.4 PBS, 0.05% NaN ₃ , 40% Glycerol
Concentration:	lot specific
Purification:	Antigen affinity purification
Conjugation:	Unconjugated
Storage:	Store at -20°C.
Stability:	1 year
Predicted Protein Size:	47 kDa
Gene Name:	argininosuccinate synthase 1
Database Link:	Entrez Gene 445 Human P00966

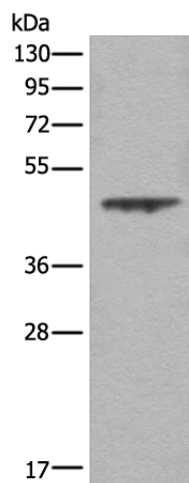
Background: The protein encoded by this gene catalyzes the penultimate step of the arginine biosynthetic pathway. There are approximately 10 to 14 copies of this gene including the pseudogenes scattered across the human genome, among which the one located on chromosome 9 appears to be the only functional gene for argininosuccinate synthetase. Mutations in the chromosome 9 copy of this gene cause citrullinemia. Two transcript variants encoding the same protein have been found for this gene.



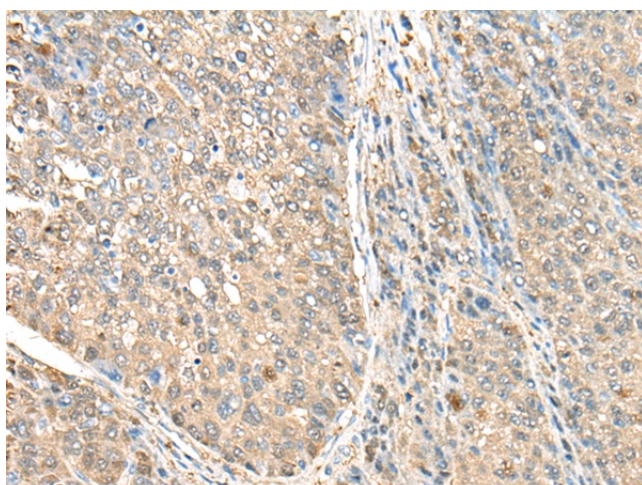
[View online »](#)

Synonyms: ASS; CTLN1; OTTHUMP00000022363; OTTHUMP00000022364

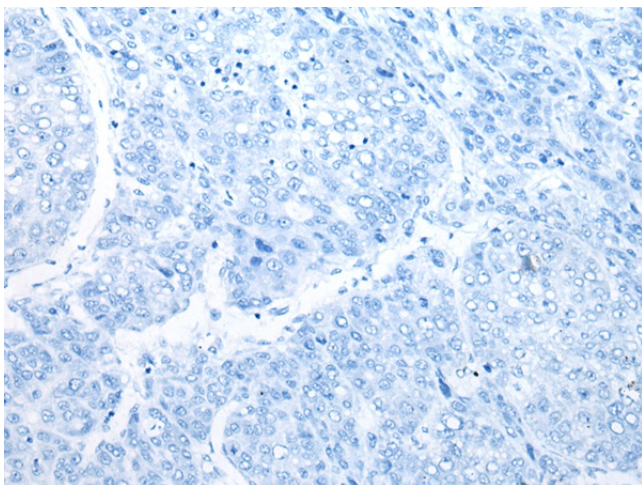
Product images:



Gel: 8%SDS-PAGE
Lysate: 40 μ g
Lane: A431 cell lysate
Primary antibody: TA369806 (ASS1 Antibody) at dilution 1/350
Secondary antibody: Goat anti rabbit IgG at 1/8000 dilution
Exposure time: 10 seconds



Immunohistochemistry of paraffin-embedded Human liver cancer tissue using TA369806 (ASS1 Antibody) at dilution 1/35 (Original magnification: \times 200)



Immunohistochemistry of paraffin-embedded Human liver cancer tissue using TA369806 (ASS1 Antibody) at dilution 1/35, treated with fusion protein. (Original magnification: x200)