

Product datasheet for **TA369783**

UBE2E2 Rabbit Polyclonal Antibody

Product data:

| | |
|-----------------------|---|
| Product Type: | Primary Antibodies |
| Applications: | IHC |
| Recommended Dilution: | IHC: 25-100 Positive control: Human liver cancer Predicted cell location: Cytoplasm and Nucleus |
| Reactivity: | Human, Mouse |
| Host: | Rabbit |
| Isotype: | IgG |
| Clonality: | Polyclonal |
| Immunogen: | Full length fusion protein |
| Formulation: | pH7.4 PBS, 0.05% NaN ₃ , 40% Glycerol |
| Concentration: | lot specific |
| Purification: | Antigen affinity purification |
| Conjugation: | Unconjugated |
| Storage: | Store at -20°C. |
| Stability: | 1 year |
| Gene Name: | ubiquitin conjugating enzyme E2 E2 |
| Database Link: | Entrez Gene 7325 Human Q96LR5 |



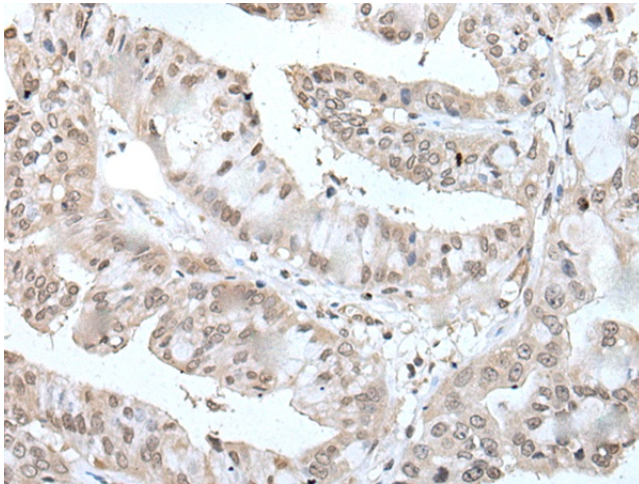
[View online »](#)

Background:

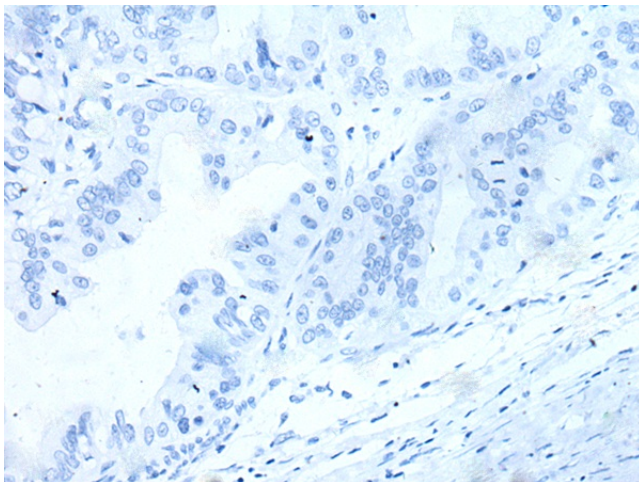
Ubiquitination is an important mechanism through which three classes of enzymes act in concert to target short-lived or abnormal proteins for destruction. The three classes of enzymes involved in ubiquitination are the ubiquitin-activating enzymes (E1s), the ubiquitin-conjugating enzymes (E2s) and the ubiquitin-protein ligases (E3s). The first step in the ubiquitination process requires the ATP-dependent activation of the ubiquitin C-terminus and the assembly of multi-ubiquitin chains by the E1 enzyme. The ubiquitin chain is then conjugated to the E2 enzyme to generate an intermediate ubiquitin-E2 complex. The E3 enzyme then catalyzes the transfer of ubiquitin from E2 to the appropriate protein substrate, thereby targeting that substrate for degradation. A wide range of enzymes facilitate this proteolytic ubiquitin pathway, one of which is UBE2E2 (also known as UBCH8 in human), which functions as an E2 enzyme and catalyzes the ATP-dependent covalent attachment of ubiquitin to target proteins, thereby playing an important role in protein degradation.

Synonyms:

FLJ25157; OTTHUMP00000161048; OTTHUMP00000208342; UBCH8

Product images:

Immunohistochemistry of paraffin-embedded Human liver cancer tissue using TA369783 (UBE2E2 Antibody) at dilution 1/30 (Original magnification: x200)



Immunohistochemistry of paraffin-embedded Human liver cancer tissue using TA369783 (UBE2E2 Antibody) at dilution 1/30, treated with fusion protein. (Original magnification: x200)