

Product datasheet for **TA369781S**

UBE2D1 Rabbit Polyclonal Antibody

Product data:

Product Type:	Primary Antibodies
Applications:	IHC, WB
Recommended Dilution:	WB: 1000-5000 WB positive control: Jurkat, 231 and LOVO cell lysates IHC: 200-400 Positive control: Human liver cancer Predicted cell location: Cytoplasm
Reactivity:	Human, Mouse, Rat
Host:	Rabbit
Isotype:	IgG
Clonality:	Polyclonal
Immunogen:	Fusion protein of human UBE2D1
Formulation:	pH7.4 PBS, 0.05% NaN ₃ , 40% Glycerol
Purification:	Antigen affinity purification
Conjugation:	Unconjugated
Storage:	Store at -20°C.
Stability:	1 year
Predicted Protein Size:	17 kDa
Gene Name:	ubiquitin conjugating enzyme E2 D1
Database Link:	Entrez Gene 7321 Human P51668



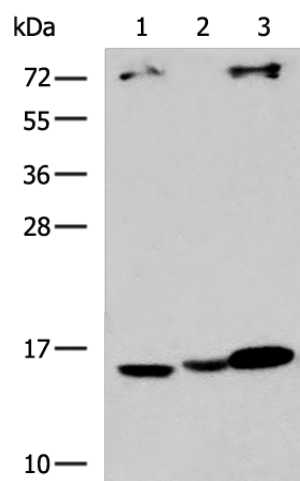
[View online »](#)

Background:

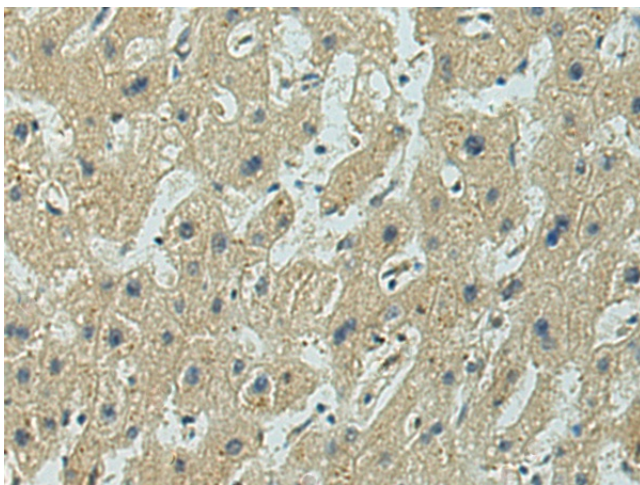
The modification of proteins with ubiquitin is an important cellular mechanism for targeting abnormal or short-lived proteins for degradation. Ubiquitination involves at least three classes of enzymes: ubiquitin-activating enzymes, or E1s, ubiquitin-conjugating enzymes, or E2s, and ubiquitin-protein ligases, or E3s. This gene encodes a member of the E2 ubiquitin-conjugating enzyme family. This enzyme is closely related to a stimulator of iron transport (SFT), and is up-regulated in hereditary hemochromatosis. It also functions in the ubiquitination of the tumor-suppressor protein p53 and the hypoxia-inducible transcription factor HIF1alpha by interacting with the E1 ubiquitin-activating enzyme and the E3 ubiquitin-protein ligases. Two transcript variants encoding different isoforms have been found for this gene.

Synonyms:

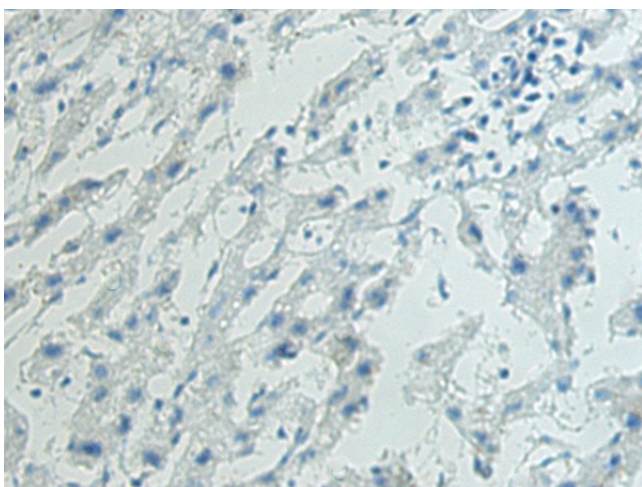
E2(17)KB1; SFT; UBC4/5; UBCH5; UBCH5A

Product images:

Gel: 12%SDS-PAGE
Lysate: 40 µg
Lane 1-3: Jurkat
231 and LOVO cell lysates
Primary antibody: [TA369781] (UBE2D1 Antibody)
at dilution 1/1000
Secondary antibody: Goat anti rabbit IgG at
1/5000 dilution
Exposure time: 30 seconds



Immunohistochemistry of paraffin-embedded
Human liver cancer tissue using [TA369781]
(UBE2D1 Antibody) at dilution 1/240 (Original
magnification: ×200)



Immunohistochemistry of paraffin-embedded Human liver cancer tissue using [TA369781] (UBE2D1 Antibody) at dilution 1/240, treated with fusion protein. (Original magnification: ×200)