

## Product datasheet for **TA369777S**

### **HSPC150 (UBE2T) Rabbit Polyclonal Antibody**

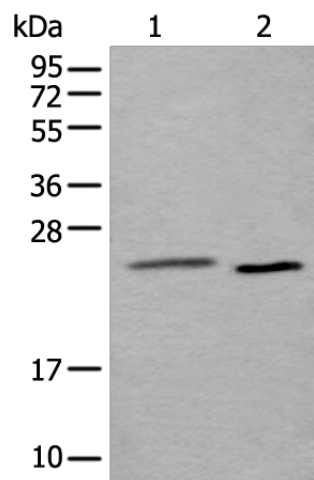
#### **Product data:**

Product Type:	Primary Antibodies
Applications:	WB
Recommended Dilution:	WB: 200-1000 WB positive control: Mouse testis tissue and Hela cell lysates
Reactivity:	Human, Mouse
Host:	Rabbit
Isotype:	IgG
Clonality:	Polyclonal
Immunogen:	Full length fusion protein
Formulation:	pH7.4 PBS, 0.05% NaN <sub>3</sub> , 40% Glycerol
Purification:	Antigen affinity purification
Conjugation:	Unconjugated
Storage:	Store at -20°C.
Stability:	1 year
Predicted Protein Size:	23 kDa
Gene Name:	ubiquitin conjugating enzyme E2 T
Database Link:	<a href="#">Entrez Gene 29089 Human Q9NPD8</a>
Background:	The protein encoded by this gene catalyzes the covalent attachment of ubiquitin to protein substrates. Defects in this gene have been associated with Fanconi anemia of complementation group T. Two transcript variants encoding different isoforms have been found for this gene.
Synonyms:	HSPC150; PIG50



[View online »](#)

## Product images:



Gel: 12%SDS-PAGE

Lysate: 40  $\mu$ g

Lane 1-2: Mouse testis tissue and HeLa cell lysates  
Primary antibody: [TA369777] (UBE2T Antibody)  
at dilution 1/250

Secondary antibody: Goat anti rabbit IgG at  
1/8000 dilution

Exposure time: 10 seconds