

## Product datasheet for **TA369773**

### UBE2Q2 Rabbit Polyclonal Antibody

#### Product data:

Product Type:	Primary Antibodies
Applications:	IHC
Recommended Dilution:	IHC: 25-100 Positive control: Human colorectal cancer Predicted cell location: Cytoplasm
Reactivity:	Human, Mouse
Host:	Rabbit
Isotype:	IgG
Clonality:	Polyclonal
Immunogen:	Fusion protein of human UBE2Q2
Formulation:	pH7.4 PBS, 0.05% NaN <sub>3</sub> , 40% Glycerol
Concentration:	lot specific
Purification:	Antigen affinity purification
Conjugation:	Unconjugated
Storage:	Store at -20°C.
Stability:	1 year
Gene Name:	ubiquitin conjugating enzyme E2 Q2
Database Link:	<a href="#">Entrez Gene 92912 Human Q8WVN8</a>



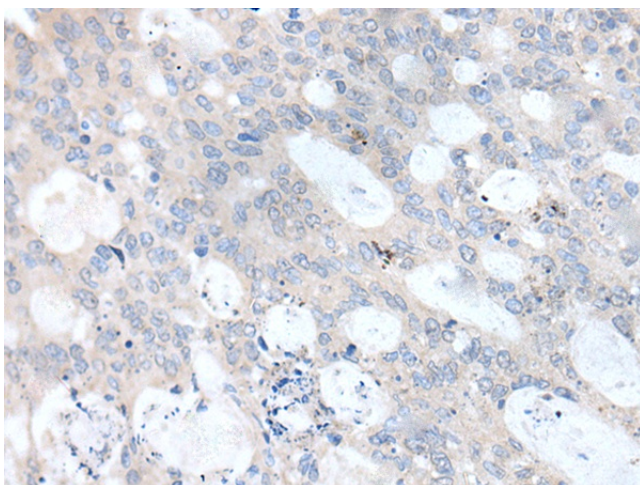
[View online »](#)

**Background:**

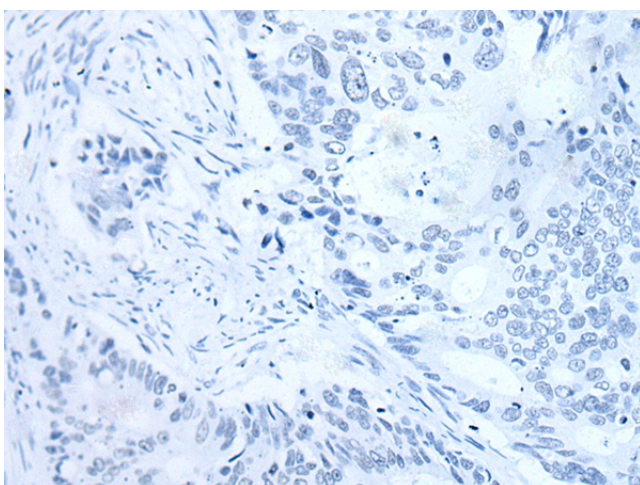
UBE2Q2 (Ubiquitin-conjugating enzyme E2 Q2) is a 375 amino acid cytoplasmic protein that is involved in ubiquitin-mediated protein degradation. Ubiquitination is an important mechanism through which three classes of enzymes act in concert to target short-lived or abnormal proteins for destruction. The three classes of enzymes involved in ubiquitination are the ubiquitin-activating enzymes (E1s), the ubiquitin-conjugating enzymes (E2s) and the ubiquitin-protein ligases (E3s). One of several members of the ubiquitin-conjugating enzyme family, UBE2Q2 is an E2 ubiquitin-conjugating enzyme that acts to catalyze the covalent attachment of ubiquitin residues to various proteins. UBE2Q2 expression is detected in invasive epithelial tissue and tumor masses including head and neck squamous cell carcinomas, suggesting a role for UBE2Q2 in carcinogenesis. Two isoforms of UBE2Q2 exist due to alternative splicing events.

**Synonyms:**

DKFZp762C143; LOC92912

**Product images:**


Immunohistochemistry of paraffin-embedded Human colorectal cancer tissue using TA369773 (UBE2Q2 Antibody) at dilution 1/35 (Original magnification: ×200)



Immunohistochemistry of paraffin-embedded Human colorectal cancer tissue using TA369773 (UBE2Q2 Antibody) at dilution 1/35, treated with fusion protein. (Original magnification: ×200)