

Product datasheet for **TA369763**

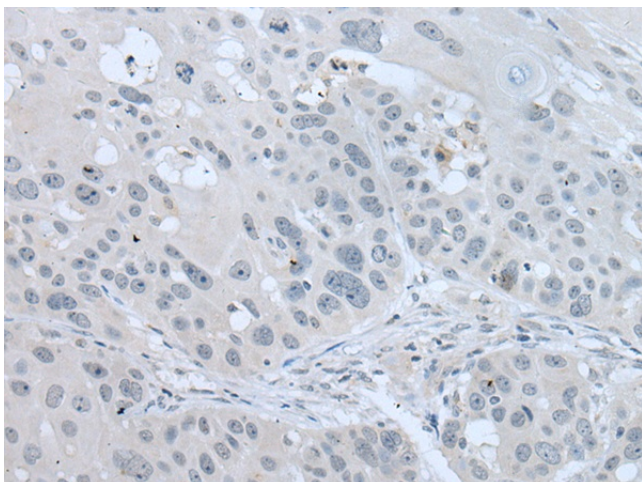
VWA2 Rabbit Polyclonal Antibody

Product data:

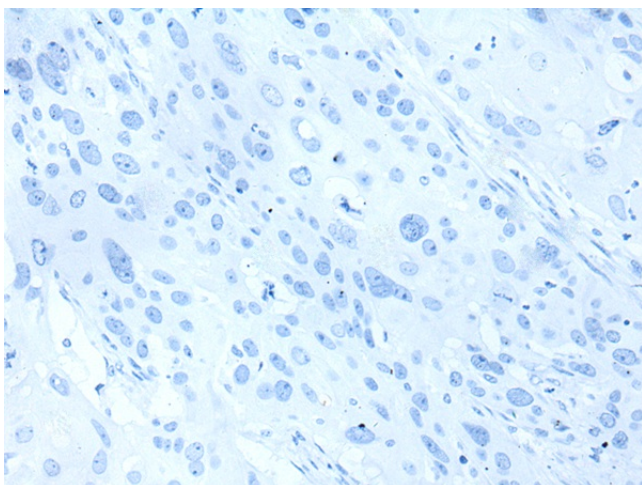
Product Type:	Primary Antibodies
Applications:	IHC
Recommended Dilution:	IHC: 25-100 Positive control: Human esophagus cancer Predicted cell location: Cytoplasm
Reactivity:	Human
Host:	Rabbit
Isotype:	IgG
Clonality:	Polyclonal
Immunogen:	Fusion protein of human VWA2
Formulation:	pH7.4 PBS, 0.05% NaN ₃ , 40% Glycerol
Concentration:	lot specific
Purification:	Antigen affinity purification
Conjugation:	Unconjugated
Storage:	Store at -20°C.
Stability:	1 year
Gene Name:	von Willebrand factor A domain containing 2
Database Link:	Entrez Gene 340706 Human Q5GFL6
Background:	This gene encodes a member of the von Willebrand factor A-like domain protein superfamily. The encoded protein is localized to the extracellular matrix and may serve as a structural component in basement membranes or in anchoring structures on scaffolds of collagen VII or fibrillin. This gene has been linked to type 1A diabetes and is a candidate serological marker for colon cancer.
Synonyms:	AMACO; CCSP-2; FLJ16213; FLJ45857; MGC157755; NET42



[View online »](#)

Product images:

Immunohistochemistry of paraffin-embedded Human esophagus cancer tissue using TA369763 (VWA2 Antibody) at dilution 1/30 (Original magnification: $\times 200$)



Immunohistochemistry of paraffin-embedded Human esophagus cancer tissue using TA369763 (VWA2 Antibody) at dilution 1/30, treated with fusion protein. (Original magnification: $\times 200$)