

Product datasheet for **TA369749**

WDFY2 Rabbit Polyclonal Antibody

Product data:

Product Type:	Primary Antibodies
Applications:	IHC, WB
Recommended Dilution:	WB: 500-2000 WB positive control: Mouse kidney tissue lysate IHC: 30-150 Positive control: Human cervical cancer Predicted cell location: Cytoplasm
Reactivity:	Human, Mouse
Host:	Rabbit
Isotype:	IgG
Clonality:	Polyclonal
Immunogen:	Fusion protein of human WDFY2
Formulation:	pH7.4 PBS, 0.05% NaN ₃ , 40% Glycerol
Concentration:	lot specific
Purification:	Antigen affinity purification
Conjugation:	Unconjugated
Storage:	Store at -20°C.
Stability:	1 year
Predicted Protein Size:	45 kDa
Gene Name:	WD repeat and FYVE domain containing 2
Database Link:	Entrez Gene 115825 Human Q96P53



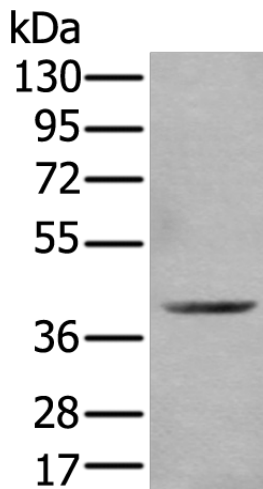
[View online »](#)

Background:

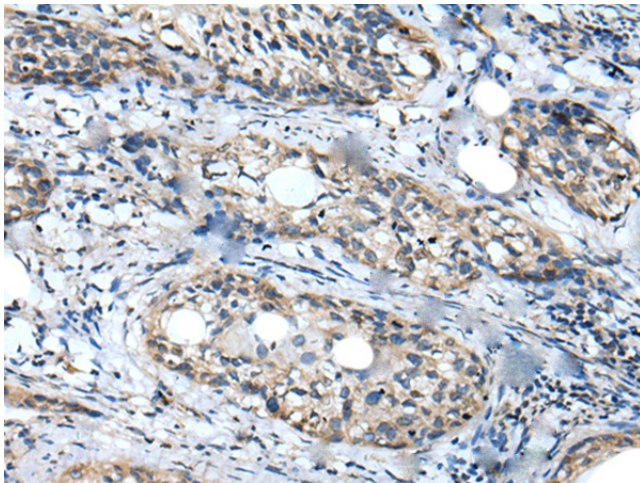
WD repeat and FYVE domain-containing protein 2 (WDFY2), also known as WDF2 and ZFYVE22, is a 400 amino acid protein that localizes to a set of small endosomes that are found within 100 nm from the plasma membrane. Highly conserved between species, WDFY2 consists of one FYVE-type zinc finger and seven WD repeats. The FYVE domain is a cysteine-rich domain of about 70 amino acids. Its primary role is to target signal-transducing proteins to cell membranes through binding to the membrane lipid phosphatidylinositol-3-phosphate with high specificity. WD-repeats are generally found in clusters of seven. They have no intrinsic catalytic activity, but they serve as a platform for protein-protein interactions. WDFY2 is suspected to play a critical role in the endocytic pathway.

Synonyms:

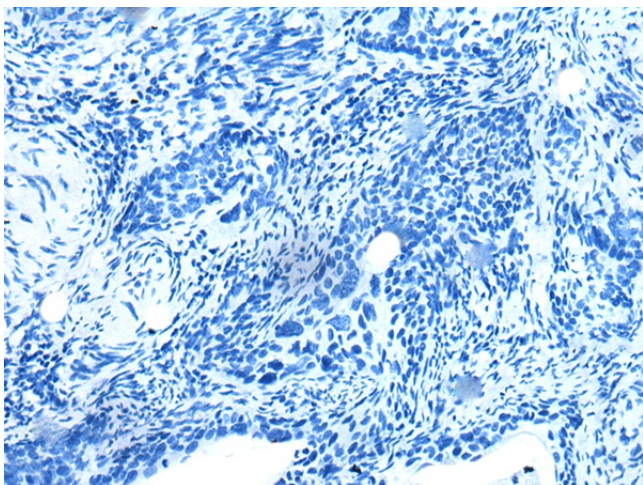
PROF; RP11-147H23.1; WDF2; ZFYVE22

Product images:

Gel: 8%SDS-PAGE
Lysate: 40 µg
Lane: Mouse kidney tissue lysate
Primary antibody: TA369749 (WDFY2 Antibody) at dilution 1/350
Secondary antibody: Goat anti rabbit IgG at 1/8000 dilution
Exposure time: 15 seconds



Immunohistochemistry of paraffin-embedded Human cervical cancer tissue using TA369749 (WDFY2 Antibody) at dilution 1/40 (Original magnification: ×200)



Immunohistochemistry of paraffin-embedded Human cervical cancer tissue using TA369749 (WDFY2 Antibody) at dilution 1/40, treated with fusion protein. (Original magnification: ×200)