

Product datasheet for **TA369748**

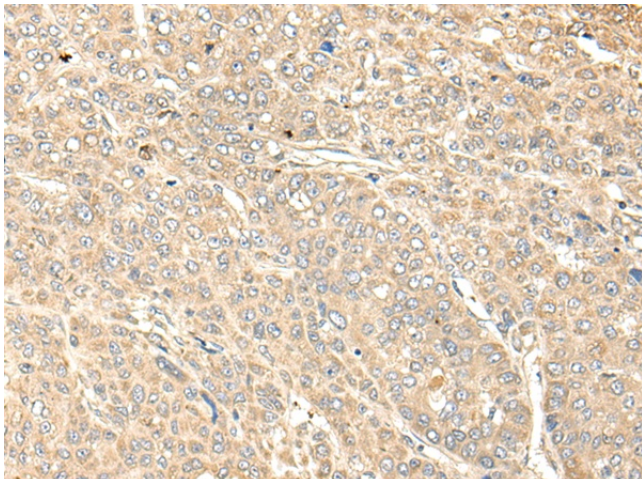
WDFY4 Rabbit Polyclonal Antibody

Product data:

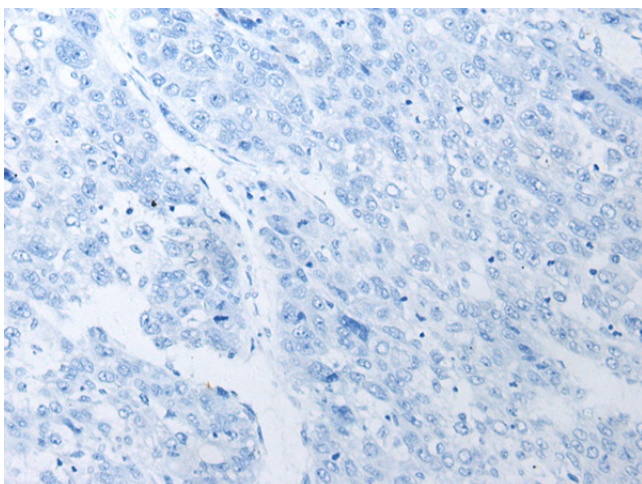
Product Type:	Primary Antibodies
Applications:	IHC
Recommended Dilution:	IHC: 40-200 Positive control: Human liver cancer Predicted cell location: Cytoplasm
Reactivity:	Human
Host:	Rabbit
Isotype:	IgG
Clonality:	Polyclonal
Immunogen:	Fusion protein of human WDFY4
Formulation:	pH7.4 PBS, 0.05% NaN ₃ , 40% Glycerol
Concentration:	lot specific
Purification:	Antigen affinity purification
Conjugation:	Unconjugated
Storage:	Store at -20°C.
Stability:	1 year
Gene Name:	WDFY family member 4
Database Link:	Entrez Gene 57705 Human Q6ZS81
Background:	WDFY4 is predominantly expressed in the immune tissues. The function of WDFY4 is not well known;
Synonyms:	C10orf64; Em:AC060234.3; FLJ17416; FLJ36288; FLJ45748; KIAA1607; MGC40604; MGC45899



[View online »](#)

Product images:

Immunohistochemistry of paraffin-embedded Human liver cancer tissue using TA369748 (WDFY4 Antibody) at dilution 1/50 (Original magnification: $\times 200$)



Immunohistochemistry of paraffin-embedded Human liver cancer tissue using TA369748 (WDFY4 Antibody) at dilution 1/50, treated with fusion protein. (Original magnification: $\times 200$)