

## Product datasheet for **TA369742S**

### WARS2 Rabbit Polyclonal Antibody

#### Product data:

Product Type:	Primary Antibodies
Applications:	IHC, WB
Recommended Dilution:	WB: 200-1000 WB positive control: MCF-7 and Hela cell lysates IHC: 25-100 Positive control: Human thyroid cancer Predicted cell location: Cytoplasm
Reactivity:	Human, Mouse
Host:	Rabbit
Isotype:	IgG
Clonality:	Polyclonal
Immunogen:	Fusion protein of human WARS2
Formulation:	pH7.4 PBS, 0.05% NaN <sub>3</sub> , 40% Glycerol
Purification:	Antigen affinity purification
Conjugation:	Unconjugated
Storage:	Store at -20°C.
Stability:	1 year
Predicted Protein Size:	40 kDa
Gene Name:	tryptophanyl tRNA synthetase 2, mitochondrial
Database Link:	<a href="#">Entrez Gene 10352 Human Q9UGM6</a>

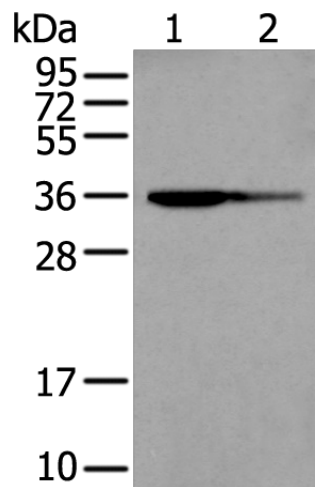
**Background:** Aminoacyl-tRNA synthetases catalyze the aminoacylation of tRNA by their cognate amino acid. Because of their central role in linking amino acids with nucleotide triplets contained in tRNAs, aminoacyl-tRNA synthetases are thought to be among the first proteins that appeared in evolution. Two forms of tryptophanyl-tRNA synthetase exist, a cytoplasmic form, named WARS, and a mitochondrial form, named WARS2. This gene encodes the mitochondrial tryptophanyl-tRNA synthetase. Two alternative transcripts encoding different isoforms have been described.



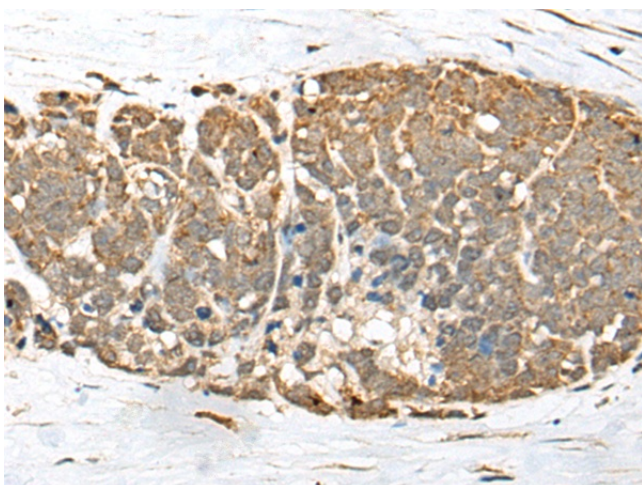
[View online »](#)

Synonyms: (Mt)TrpRS; TrpRS

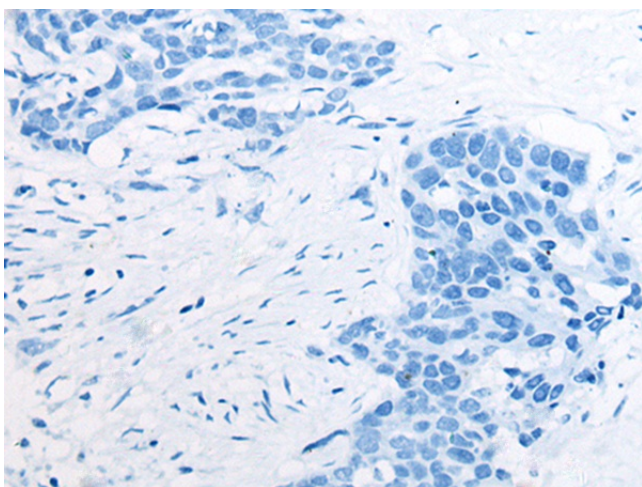
**Product images:**



Gel: 12%SDS-PAGE  
 Lysate: 40 µg  
 Lane 1-2: MCF-7 and Hela cell lysates  
 Primary antibody: [TA369742] (WARS2 Antibody) at dilution 1/200  
 Secondary antibody: Goat anti rabbit IgG at 1/8000 dilution  
 Exposure time: 5 seconds



Immunohistochemistry of paraffin-embedded Human thyroid cancer tissue using [TA369742] (WARS2 Antibody) at dilution 1/30 (Original magnification: ×200)



Immunohistochemistry of paraffin-embedded Human thyroid cancer tissue using [TA369742] (WARS2 Antibody) at dilution 1/30, treated with fusion protein. (Original magnification:  $\times 200$ )