

## Product datasheet for **TA369740S**

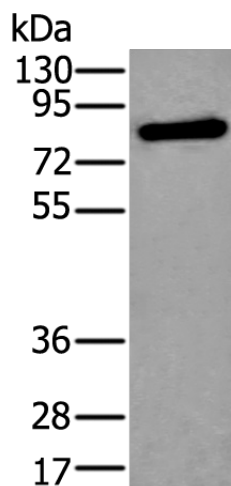
### XPNPEP2 Rabbit Polyclonal Antibody

#### Product data:

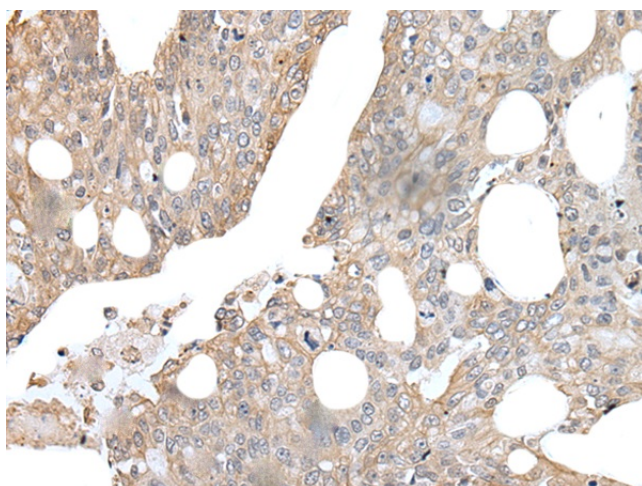
Product Type:	Primary Antibodies
Applications:	IHC, WB
Recommended Dilution:	WB: 200-1000 WB positive control: Human kidney tissue lysate IHC: 25-100 Positive control: Human colorectal cancer Predicted cell location: Cell membrane
Reactivity:	Human
Host:	Rabbit
Isotype:	IgG
Clonality:	Polyclonal
Immunogen:	Fusion protein of human XPNPEP2
Formulation:	pH7.4 PBS, 0.05% NaN <sub>3</sub> , 40% Glycerol
Purification:	Antigen affinity purification
Conjugation:	Unconjugated
Storage:	Store at -20°C.
Stability:	1 year
Predicted Protein Size:	76 kDa
Gene Name:	X-prolyl aminopeptidase (aminopeptidase P) 2, membrane-bound
Database Link:	<a href="#">Entrez Gene 7512 Human O43895</a>
Background:	Aminopeptidase P is a hydrolase specific for N-terminal imido bonds, which are common to several collagen degradation products, neuropeptides, vasoactive peptides, and cytokines. Structurally, the enzyme is a member of the 'pita bread fold' family and occurs in mammalian tissues in both soluble and GPI-anchored membrane-bound forms. A membrane-bound and soluble form of this enzyme have been identified as products of two separate genes.
Synonyms:	mAmP



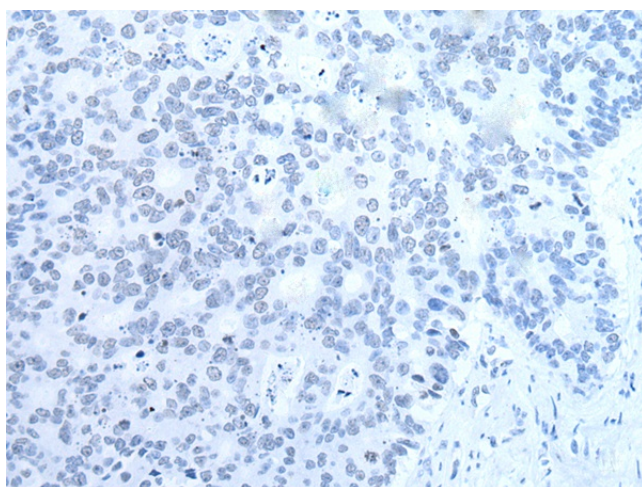
[View online »](#)

**Product images:**


Gel: 8%SDS-PAGE  
 Lysate: 40 µg  
 Lane: Human kidney tissue lysate  
 Primary antibody: [TA369740] (XPNPEP2 Antibody) at dilution 1/200  
 Secondary antibody: Goat anti rabbit IgG at 1/8000 dilution  
 Exposure time: 20 seconds



Immunohistochemistry of paraffin-embedded Human colorectal cancer tissue using [TA369740] (XPNPEP2 Antibody) at dilution 1/35 (Original magnification: ×200)



Immunohistochemistry of paraffin-embedded Human colorectal cancer tissue using [TA369740] (XPNPEP2 Antibody) at dilution 1/35, treated with fusion protein. (Original magnification: ×200)